

# PPID Recombinant Matched Antibody Pair, PBS Only

Catalog Number: **MP01018-4**

## Capture Antibody Information

**Catalog Number:**  
84115-7-PBS

**Host:**  
Rabbit

**Isotype:**  
IgG

**Purification Method:**  
Protein A purification

**Clone ID:**  
241361B10

**Reactivity:**  
human

**Immunogen Catalog Number:**  
Ag3409

**Conjugate:**  
Unconjugated

**Full name:**  
peptidylprolyl isomerase D

**Gene ID:**  
5481

## Detection Antibody Information

**Catalog Number:**  
84115-2-PBS

**Host:**  
Rabbit

**Isotype:**  
IgG

**Purification Method:**  
Protein A purification

**Clone ID:**  
241361B5

**Reactivity:**  
human

**GenBank:**  
BC030707

**Immunogen Catalog Number:**  
Ag3409

**Conjugate:**  
Unconjugated

**Full name:**  
peptidylprolyl isomerase D

**Gene ID:**  
5481

## Applications

**Tested Applications:**  
Sandwich ELISA

**Range:**  
0.313-20 ng/mL (Sandwich ELISA)

**Recommended Dilutions:**  
It is recommended that this reagent should be titrated in each testing system to obtain optimal results.

## Product Information

MP01018-4 targets PPID in immunoassays as a matched antibody pair. Validated in Sandwich ELISA.

Capture antibody: PPID Recombinant antibody, PBS Only (Capture) 84115-7-PBS (241361B10). 100 µg. Concentration 1 mg/mL.

Detection antibody: PPID Recombinant antibody, PBS Only (Detector) 84115-2-PBS (241361B5). 100 µg. Concentration 1 mg/mL.

Unconjugated rabbit recombinant monoclonal antibody pair in PBS only storage buffer at a concentration of 1 mg/mL, ready for conjugation. Created using Proteintech's proprietary in-house recombinant technology. Recombinant production enables unrivalled batch-to-batch consistency, easy scale-up, and future security of supply.

Matched antibody pairs are designed for use in a variety of assays and platforms that require matched antibody pairs.

Antibody use should be optimized for each application and assay.

## Storage

**Storage:**  
Store at -80°C.

**Storage buffer:**  
PBS only

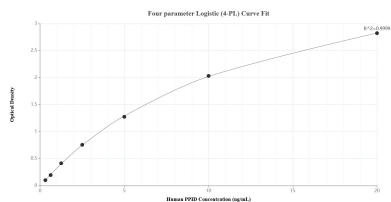
For technical support and original validation data for this product please contact:

T: 1 (888) 4PTGLAB (1-888-478-4522) (toll free in USA), or 1(312) 455-8498 (outside USA)

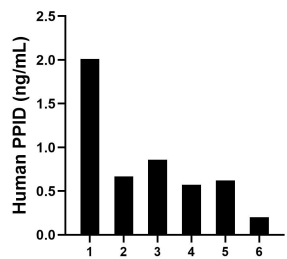
E: [proteintech@ptglab.com](mailto:proteintech@ptglab.com)  
W: [ptglab.com](http://ptglab.com)

This product is exclusively available under Proteintech Group brand and is not available to purchase from any other manufacturer.

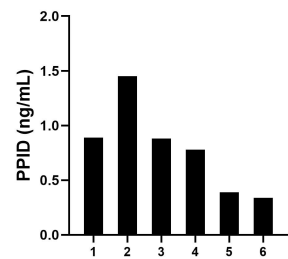
## Selected Validation Data



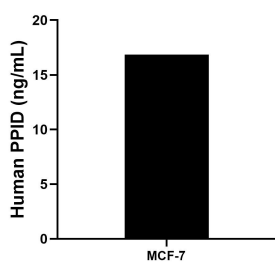
Sandwich ELISA standard curve of MP01018-4, Human PPID Recombinant Matched Antibody Pair - PBS only. 84115-7-PBS was coated to a plate as the capture antibody and incubated with serial dilutions of standard Ag3409. 84115-2-PBS was HRP conjugated as the detection antibody. Range: 0.313-20 ng/mL



Serum of six individual healthy human donors was measured. The PPID concentration of detected samples was determined to be 0.82 ng/mL with a range of 0.20-2.01 ng/mL



Serum of six rats was measured. The PPID concentration of detected samples was determined to be 0.79 ng/mL with a range of 0.34-1.45 ng/mL



The mean PPID concentration was determined to be 16.84 ng/mL in MCF-7 cell extract based on a 1.20 mg/mL extract load.