

Mouse HER2/ErbB2 Recombinant Matched Antibody Pair, PBS Only

Catalog Number: **MP01039-4**

Capture Antibody Information

Catalog Number:
84128-4-PBS
Host:
Rabbit
Isotype:
IgG
Purification Method:
Protein A purification

Clone ID:
241366G12
Reactivity:
mouse

Conjugate:
Unconjugated
Full name:
v-erb-b2 erythroblastic leukemia viral oncogene homolog 2, neuro/glioblastoma derived oncogene homolog (avian)
Gene ID:
13866

Detection Antibody Information

Catalog Number:
84128-6-PBS
Host:
Rabbit
Isotype:
IgG
Purification Method:
Protein A purification

Clone ID:
241366B12
Reactivity:
mouse
GenBank:
NM_001003817.1

Conjugate:
Unconjugated
Full name:
v-erb-b2 erythroblastic leukemia viral oncogene homolog 2, neuro/glioblastoma derived oncogene homolog (avian)
Gene ID:
13866

Applications

Tested Applications:
Sandwich ELISA

Range:
39.1-2500 pg/mL (Sandwich ELISA)

Recommended Dilutions:
It is recommended that this reagent should be titrated in each testing system to obtain optimal results.

Product Information

MP01039-4 targets HER2/ErbB2 in immunoassays as a matched antibody pair. Validated in Sandwich ELISA.

Capture antibody: Mouse HER2/ErbB2 Recombinant antibody, PBS Only (Capture) 84128-4-PBS (241366G12). 100 µg. Concentration 1 mg/mL.

Detection antibody: Mouse HER2/ErbB2 Recombinant antibody, PBS Only (Detector) 84128-6-PBS (241366B12). 100 µg. Concentration 1 mg/mL.

Unconjugated rabbit recombinant monoclonal antibody pair in PBS only storage buffer at a concentration of 1 mg/mL, ready for conjugation. Created using Proteintech's proprietary in-house recombinant technology. Recombinant production enables unrivalled batch-to-batch consistency, easy scale-up, and future security of supply.

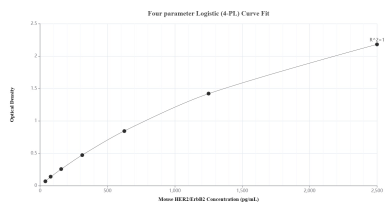
Matched antibody pairs are designed for use in a variety of assays and platforms that require matched antibody pairs.

Antibody use should be optimized for each application and assay.

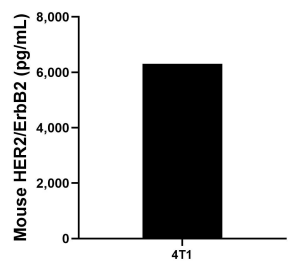
Storage

Storage:
Store at -80°C.
Storage buffer:
PBS only

Selected Validation Data



Sandwich ELISA standard curve of MP01039-4, Mouse HER2/ErbB2 Recombinant Matched Antibody Pair - PBS only. 84128-4-PBS was coated to a plate as the capture antibody and incubated with serial dilutions of standard Eg0803. 84128-6-PBS was HRP conjugated as the detection antibody. Range: 39.1-2500 pg/mL.



The mean HER2/ErbB2 concentration was determined to be 6,307.1 pg/mL in 4T1 cell extract based on a 12.0 mg/mL extract load.