

For Research Use Only

Mouse E-Cadherin Recombinant Matched Antibody Pair, PBS Only



Catalog Number: **MP01047-2**

Capture Antibody Information

Catalog Number:

84111-1-PBS

Host:

Rabbit

Isotype:

IgG

Purification Method:

Protein A purification

Clone ID:

241282A5

Reactivity:

mouse

Immunogen Catalog Number:

Eg0975

Conjugate:

Unconjugated

Full name:

cadherin 1

Gene ID:

12550

Detection Antibody Information

Catalog Number:

84111-2-PBS

Host:

Rabbit

Isotype:

IgG

Purification Method:

Protein A purification

Clone ID:

241282A8

Reactivity:

human, mouse

GenBank:

NM_009864.3

Immunogen Catalog Number:

Eg0975

Conjugate:

Unconjugated

Full name:

cadherin 1

Gene ID:

12550

Applications

Tested Applications:

Cytometric bead array, Sandwich ELISA

Range:

0.625-80 ng/mL (Cytometric Bead Array)
9.77-625 pg/mL (Sandwich ELISA)

Recommended Dilutions:

It is recommended that this reagent should be titrated in each testing system to obtain optimal results.

Product Information

MP01047-2 targets E-Cadherin in immunoassays as a matched antibody pair. Validated in Cytometric bead array, Sandwich ELISA.

Capture antibody: Mouse E-Cadherin Recombinant antibody, PBS Only (Capture) 84111-1-PBS (241282A5). 100 µg. Concentration 1 mg/mL.

Detection antibody: Mouse E-Cadherin Recombinant antibody, PBS Only (Detector) 84111-2-PBS (241282A8). 100 µg. Concentration 1 mg/mL.

Unconjugated rabbit recombinant monoclonal antibody pair in PBS only storage buffer at a concentration of 1 mg/mL, ready for conjugation. Created using Proteintech's proprietary in-house recombinant technology. Recombinant production enables unrivalled batch-to-batch consistency, easy scale-up, and future security of supply.

Matched antibody pairs are designed for use in a variety of assays and platforms that require matched antibody pairs.

Antibody use should be optimized for each application and assay.

Storage

Storage:

Store at -80°C.

Storage buffer:

PBS only

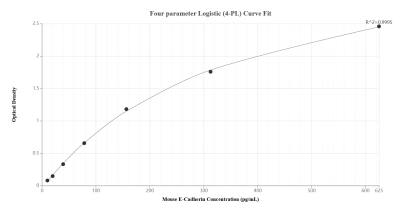
For technical support and original validation data for this product please contact:

T: 1 (888) 4PTGLAB (1-888-478-4522) (toll free in USA), or 1(312) 455-8498 (outside USA)

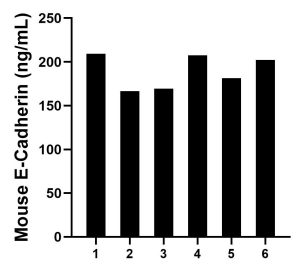
E: proteintech@ptglab.com
W: ptglab.com

This product is exclusively available under Proteintech Group brand and is not available to purchase from any other manufacturer.

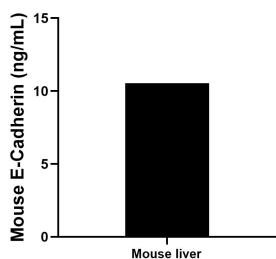
Selected Validation Data



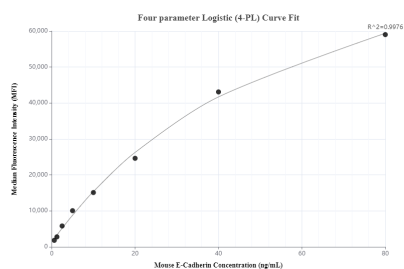
Sandwich ELISA standard curve of MP01047-2, Mouse E-Cadherin Recombinant Matched Antibody Pair - PBS only. 84111-1-PBS was coated to a plate as the capture antibody and incubated with serial dilutions of standard Eg0975. 84111-2-PBS was HRP conjugated as the detection antibody. Range: 9.77-625 pg/mL



Serum of six mice was measured. The E-Cadherin concentration of detected samples was determined to be 189.4 ng/mL with a range of 166.7-209.1 ng/mL



The mean E-Cadherin concentration was determined to be 10.6 ng/mL in mouse liver tissue extract based on a 5.0 mg/mL extract load.



Cytometric bead array standard curve of MP01047-2, MOUSE E-Cadherin Recombinant Matched Antibody Pair, PBS Only. Capture antibody: 84111-1-PBS. Detection antibody: 84111-2-PBS. Standard: Eg0975. Range: 0.625-80 ng/mL