

COX-1/Cyclooxygenase-1

Recombinant Matched Antibody Pair, PBS Only

Catalog Number: **MP01068-4**

Capture Antibody Information

Catalog Number:
84151-5-PBS
Host:
Rabbit
Isotype:
IgG
Purification Method:
Protein A purification

Clone ID:
241373F11
Reactivity:
human
Immunogen Catalog Number:
Ag4055

Conjugate:
Unconjugated
Full name:
prostaglandin-endoperoxide synthase
1 (prostaglandin G/H synthase and
cyclooxygenase)
Gene ID:
5742

Detection Antibody Information

Catalog Number:
84151-2-PBS
Host:
Rabbit
Isotype:
IgG
Purification Method:
Protein A purification

Clone ID:
241373B7
Reactivity:
human
GenBank:
BC029840
Immunogen Catalog Number:
Ag4055

Conjugate:
Unconjugated
Full name:
prostaglandin-endoperoxide synthase
1 (prostaglandin G/H synthase and
cyclooxygenase)
Gene ID:
5742

Applications

Tested Applications:
Sandwich ELISA

Range:
1.56-50 ng/mL (Sandwich ELISA)

Recommended Dilutions:
It is recommended that this reagent
should be titrated in each testing
system to obtain optimal results.

Product Information

MP01068-4 targets COX-1/Cyclooxygenase-1 in immunoassays as a matched antibody pair. Validated in Sandwich ELISA.

Capture antibody: PTGS1 Recombinant antibody, PBS Only (Capture) 84151-5-PBS (241373F11). 100 µg. Concentration 1 mg/mL.

Detection antibody: COX-1/Cyclooxygenase-1 Recombinant antibody, PBS Only (Capture/Detector) 84151-2-PBS (241373B7). 100 µg. Concentration 1 mg/mL.

Unconjugated rabbit recombinant monoclonal antibody pair in PBS only storage buffer at a concentration of 1 mg/mL, ready for conjugation. Created using Proteintech's proprietary in-house recombinant technology. Recombinant production enables unrivalled batch-to-batch consistency, easy scale-up, and future security of supply.

Matched antibody pairs are designed for use in a variety of assays and platforms that require matched antibody pairs.

Antibody use should be optimized for each application and assay.

Storage

Storage:
Store at -80°C.
Storage buffer:
PBS only

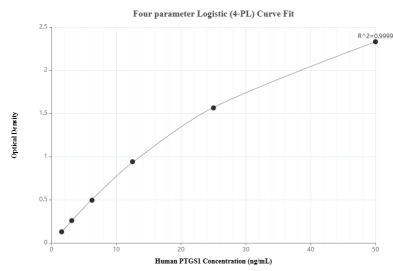
For technical support and original validation data for this product please contact:

T: 1 (888) 4PTGLAB (1-888-478-4522) (toll free
in USA), or 1(312) 455-8498 (outside USA)

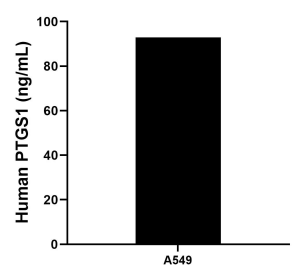
E: proteintech@ptglab.com
W: ptglab.com

This product is exclusively available under Proteintech Group brand and is not available to purchase from any other manufacturer.

Selected Validation Data



Sandwich ELISA standard curve of MP01068-4, Human COX-1/Cyclooxygenase-1 Recombinant Matched Antibody Pair - PBS only. 84151-5-PBS was coated to a plate as the capture antibody and incubated with serial dilutions of standard Ag4055. 84151-2-PBS was HRP conjugated as the detection antibody. Range: 1.56-50 ng/mL



The mean COX-1/Cyclooxygenase-1 concentration was determined to be 92.92 ng/mL in A549 cell extract based on a 2.5 mg/mL extract load.