

UCH-L1/PGP9.5 Recombinant Matched Antibody Pair, PBS Only

Catalog Number: **MP01079-2**

Capture Antibody Information

Catalog Number:
84154-2-PBS
Host:
Rabbit
Isotype:
IgG
Purification Method:
Protein A purification

Clone ID:
241107C5
Reactivity:
human
Immunogen Catalog Number:
Ag6490

Conjugate:
Unconjugated
Full name:
ubiquitin carboxyl-terminal esterase L1 (ubiquitin thiolesterase)
Gene ID:
7345

Detection Antibody Information

Catalog Number:
84154-3-PBS
Host:
Rabbit
Isotype:
IgG
Purification Method:
Protein A purification

Clone ID:
241107G1
Reactivity:
human
GenBank:
BC000332
Immunogen Catalog Number:
Ag6490

Conjugate:
Unconjugated
Full name:
ubiquitin carboxyl-terminal esterase L1 (ubiquitin thiolesterase)
Gene ID:
7345

Applications

Tested Applications:
Cytometric bead array, Sandwich ELISA

Range:
0.781-100 ng/mL (Cytometric Bead Array)
0.625-20 ng/mL (Sandwich ELISA)

Recommended Dilutions:
It is recommended that this reagent should be titrated in each testing system to obtain optimal results.

Product Information

MP01079-2 targets UCH-L1/PGP9.5 in immunoassays as a matched antibody pair. Validated in Cytometric bead array, Sandwich ELISA.

Capture antibody: UCH-L1/PGP9.5 Recombinant antibody, PBS Only (Capture) 84154-2-PBS (241107C5). 100 µg. Concentration 1 mg/mL.

Detection antibody: UCH-L1/PGP9.5 Recombinant antibody, PBS Only (Capture/Detector) 84154-3-PBS (241107G1). 100 µg. Concentration 1 mg/mL.

Unconjugated rabbit recombinant monoclonal antibody pair in PBS only storage buffer at a concentration of 1 mg/mL, ready for conjugation. Created using Proteintech's proprietary in-house recombinant technology. Recombinant production enables unrivalled batch-to-batch consistency, easy scale-up, and future security of supply.

Matched antibody pairs are designed for use in a variety of assays and platforms that require matched antibody pairs.

Antibody use should be optimized for each application and assay.

Storage

Storage:
Store at -80°C.
Storage buffer:
PBS only

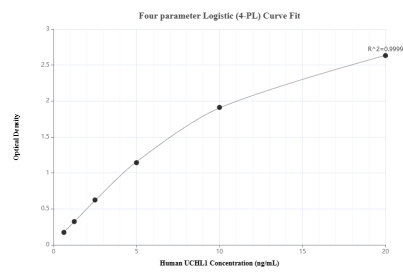
For technical support and original validation data for this product please contact:

T: 1 (888) 4PTGLAB (1-888-478-4522) (toll free in USA), or 1(312) 455-8498 (outside USA)

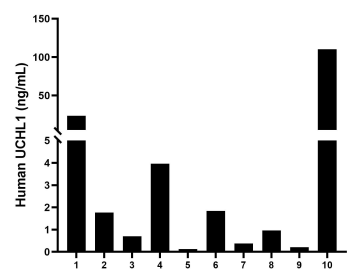
E: proteintech@ptglab.com
W: ptglab.com

This product is exclusively available under Proteintech Group brand and is not available to purchase from any other manufacturer.

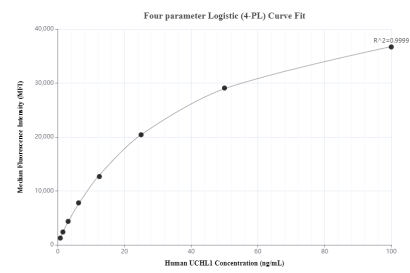
Selected Validation Data



Sandwich ELISA standard curve of MP01079-2, Human UCH-L1/PGP9.5 Recombinant Matched Antibody Pair - PBS only. 84154-2-PBS was coated to a plate as the capture antibody and incubated with serial dilutions of standard Ag6490. 84154-3-PBS was HRP conjugated as the detection antibody. Range: 0.625-20 ng/mL



Serum of ten individual healthy human donors was measured. The human UCH-L1/PGP9.5 concentration of detected samples was determined to be 8.99 ng/mL with a range of 0.13 - 110.20 ng/mL



Cytometric bead array standard curve of MP01079-2, UCH-L1/PGP9.5 Recombinant Matched Antibody Pair, PBS Only. Capture antibody: 84154-2-PBS. Detection antibody: 84154-3-PBS. Standard: Ag6490. Range: 0.781-100 ng/mL