

MED6 Recombinant Matched Antibody Pair, PBS Only

Catalog Number: **MP01087-3**

Capture Antibody Information

Catalog Number:
84184-4-PBS

Host:
Rabbit

Isotype:
IgG

Purification Method:
Protein A purification

Clone ID:
241382H2

Reactivity:
human, mouse

Immunogen Catalog Number:
Ag7541

Conjugate:
Unconjugated

Full name:
mediator complex subunit 6

Gene ID:
10001

Detection Antibody Information

Catalog Number:
84184-2-PBS

Host:
Rabbit

Isotype:
IgG

Purification Method:
Protein A purification

Clone ID:
241382E3

Reactivity:
human

GenBank:
BC004106

Immunogen Catalog Number:
Ag7541

Conjugate:
Unconjugated

Full name:
mediator complex subunit 6

Gene ID:
10001

Applications

Tested Applications:

Cytometric bead array, Sandwich ELISA

Range:

0.781-100 ng/mL (Cytometric Bead Array)
156-5000 pg/mL (Sandwich ELISA)

Recommended Dilutions:

It is recommended that this reagent should be titrated in each testing system to obtain optimal results.

Product Information

MP01087-3 targets MED6 in immunoassays as a matched antibody pair. Validated in Cytometric bead array, Sandwich ELISA.

Capture antibody: MED6 Recombinant antibody, PBS Only (Capture) 84184-4-PBS (241382H2). 100 µg. Concentration 1 mg/mL.

Detection antibody: MED6 Recombinant antibody, PBS Only (Detector) 84184-2-PBS (241382E3). 100 µg. Concentration 1 mg/mL.

Alternative MED6 matched antibody pairs: MP01087-1, MP01087-2

Unconjugated rabbit recombinant monoclonal antibody pair in PBS only storage buffer at a concentration of 1 mg/mL, ready for conjugation. Created using Proteintech's proprietary in-house recombinant technology. Recombinant production enables unrivalled batch-to-batch consistency, easy scale-up, and future security of supply.

Matched antibody pairs are designed for use in a variety of assays and platforms that require matched antibody pairs.

Antibody use should be optimized for each application and assay.

Storage

Storage:

Store at -80°C.

Storage buffer:
PBS only

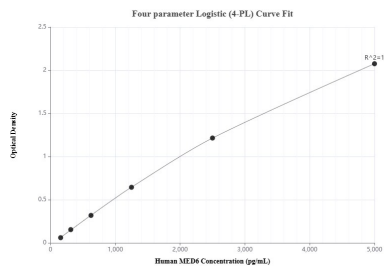
For technical support and original validation data for this product please contact:

T: 1 (888) 4PTGLAB (1-888-478-4522) (toll free in USA), or 1(312) 455-8498 (outside USA)

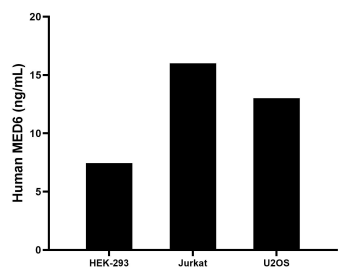
E: proteintech@ptglab.com
W: ptglab.com

This product is exclusively available under Proteintech Group brand and is not available to purchase from any other manufacturer.

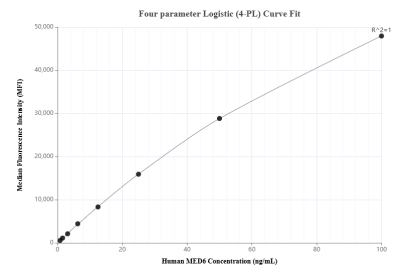
Selected Validation Data



Sandwich ELISA standard curve of MP01087-3, Human MED6 Recombinant Matched Antibody Pair - PBS only. 84184-4-PBS was coated to a plate as the capture antibody and incubated with serial dilutions of standard Ag7541. 84184-2-PBS was HRP conjugated as the detection antibody. Range: 156-5000 pg/mL



The mean MED6 concentration was determined to be 7.45 ng/mL in HEK-293 cell extract based on a 1.5 mg/mL extract load, 16.00 ng/mL in Jurkat cell extract based on a 1.5 mg/mL extract load and 13.01 ng/mL in U2OS cell extract based on a 3.1 mg/mL extract load.



Cytometric bead array standard curve of MP01087-3, MED6 Recombinant Matched Antibody Pair, PBS Only. Capture antibody: 84184-4-PBS. Detection antibody: 84184-2-PBS. Standard: Ag7541. Range: 0.781-100 ng/mL