

For Research Use Only

Mouse CD6 Recombinant Matched Antibody Pair, PBS Only



Catalog Number:MP01099-3

Capture Antibody Information

Catalog Number:
84166-4-PBS
Host:
Rabbit
Isotype:
IgG
Purification Method:
Protein A purification

Clone ID:
241471A7
Reactivity:
mouse
Immunogen Catalog Number:
Eg1401

Conjugate:
Unconjugated
Full name:
CD6 antigen
Gene ID:
12511

Detection Antibody Information

Catalog Number:
84166-2-PBS
Host:
Rabbit
Isotype:
IgG
Purification Method:
Protein A purification

Clone ID:
241471D4
Reactivity:
mouse
GenBank:
NM_009852.3
Immunogen Catalog Number:
Eg1401

Conjugate:
Unconjugated
Full name:
CD6 antigen
Gene ID:
12511

Applications

Tested Applications:
Sandwich ELISA

Range:
39.1-2500 pg/mL (Sandwich ELISA)

Recommended Dilutions:
It is recommended that this reagent should be titrated in each testing system to obtain optimal results.

Product Information

MP01099-3 targets CD6 in immunoassays as a matched antibody pair. Validated in Sandwich ELISA.

Capture antibody: Mouse CD6 Recombinant antibody, PBS Only (Capture) 84166-4-PBS (241471A7). 100 µg. Concentration 1 mg/mL.

Detection antibody: Mouse CD6 Recombinant antibody, PBS Only (Capture/Detector) 84166-2-PBS (241471D4). 100 µg. Concentration 1 mg/mL.

Unconjugated rabbit recombinant monoclonal antibody pair in PBS only storage buffer at a concentration of 1 mg/mL, ready for conjugation. Created using Proteintech's proprietary in-house recombinant technology. Recombinant production enables unrivalled batch-to-batch consistency, easy scale-up, and future security of supply.

Matched antibody pairs are designed for use in a variety of assays and platforms that require matched antibody pairs.

Antibody use should be optimized for each application and assay.

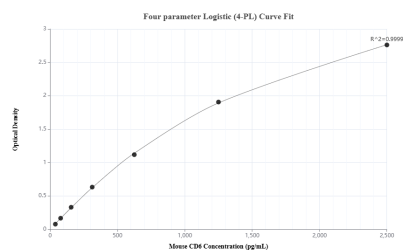
Storage

Storage:
Store at -80°C.
Storage buffer:
PBS only

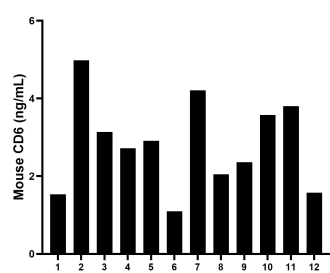
For technical support and original validation data for this product please contact:
T: 1 (888) 4PTGLAB (1-888-478-4522) (toll free in USA), or 1(312) 455-8498 (outside USA)
E: proteintech@ptglab.com
W: ptglab.com

This product is exclusively available under Proteintech Group brand and is not available to purchase from any other manufacturer.

Selected Validation Data



Sandwich ELISA standard curve of MP01099-3, Mouse CD6 Recombinant Matched Antibody Pair - PBS only. 84166-4-PBS was coated to a plate as the capture antibody and incubated with serial dilutions of standard Eg1401. 84166-2-PBS was HRP conjugated as the detection antibody. Range: 39.1-2500 pg/mL



Serum of twelve mice was measured. The mouse CD6 concentration of detected samples was determined to be 2.83 ng/mL with a range of 1.10 - 4.98 ng/mL.