

For Research Use Only

PRKAG2 Recombinant Matched Antibody Pair, PBS Only



Catalog Number:MP01102-2

Capture Antibody Information

Catalog Number:
84169-6-PBS
Host:
Rabbit
Isotype:
IgG
Purification Method:
Protein A purification

Clone ID:
260578G8
Reactivity:
human
Immunogen Catalog Number:
Ag3214

Conjugate:
Unconjugated
Full name:
protein kinase, AMP-activated,
gamma 2 non-catalytic subunit
Gene ID:
51422

Detection Antibody Information

Catalog Number:
84169-5-PBS
Host:
Rabbit
Isotype:
IgG
Purification Method:
Protein A purification

Clone ID:
260578C10
Reactivity:
human
GenBank:
BC020540
Immunogen Catalog Number:
Ag3214

Conjugate:
Unconjugated
Full name:
protein kinase, AMP-activated,
gamma 2 non-catalytic subunit
Gene ID:
51422

Applications

Tested Applications:
Cytometric bead array

Range:
0.625-80 ng/mL (Cytometric Bead Array)

Recommended Dilutions:
It is recommended that this reagent should be titrated in each testing system to obtain optimal results.

Product Information

MP01102-2 targets PRKAG2 in immunoassays as a matched antibody pair. Validated in Cytometric bead array.

Capture antibody: PRKAG2 Recombinant monoclonal antibody, PBS Only (Capture) 84169-6-PBS (260578G8). 100 µg. Concentration 1 mg/mL.

Detection antibody: PRKAG2 Recombinant monoclonal antibody, PBS Only (Detector) 84169-5-PBS (260578C10). 100 µg. Concentration 1 mg/mL.

Unconjugated rabbit recombinant monoclonal antibody pair in PBS only storage buffer at a concentration of 1 mg/mL, ready for conjugation. Created using Proteintech's proprietary in-house recombinant technology. Recombinant production enables unrivalled batch-to-batch consistency, easy scale-up, and future security of supply.

Matched antibody pairs are designed for use in a variety of assays and platforms that require matched antibody pairs.

Antibody use should be optimized for each application and assay.

Storage

Storage:
Store at -80°C.
Storage buffer:
PBS only

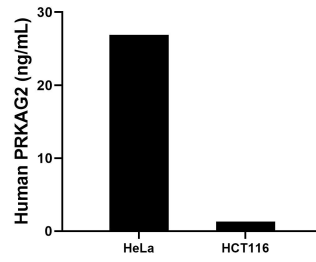
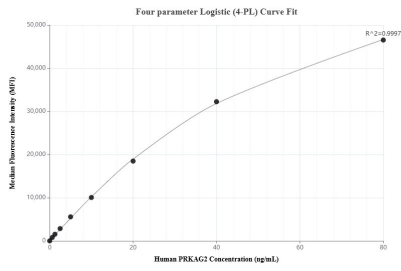
For technical support and original validation data for this product please contact:

T: 1 (888) 4PTGLAB (1-888-478-4522) (toll free in USA), or 1(312) 455-8498 (outside USA)

E: proteintech@ptglab.com
W: ptglab.com

This product is exclusively available under Proteintech Group brand and is not available to purchase from any other manufacturer.

Selected Validation Data



Cytometric bead array standard curve of MP01102-2, PRKAG2 Recombinant Matched Antibody Pair, PBS Only. Capture antibody: 84169-6-PBS. Detection antibody: 84169-5-PBS. Standard: Ag3214. Range: 0.625-80 ng/mL

The mean PRKAG2 concentration was determined to be 26.9 ng/mL in HeLa cell extract based on a 1.0 mg/mL extract load, 1.3 ng/mL in HCT116 cell extract based on a 1.0 mg/mL extract load.