

CD84 Recombinant Matched Antibody Pair, PBS Only

Catalog Number: **MP01112-2**

Capture Antibody Information

Catalog Number:
84245-1-PBS
Host:
Rabbit
Isotype:
IgG
Purification Method:
Protein A purification

Clone ID:
241342A10
Reactivity:
human

Conjugate:
Unconjugated
Full name:
CD84 molecule
Gene ID:
8832

Detection Antibody Information

Catalog Number:
98108-1-PBS
Host:
Rabbit
Isotype:
IgG
Purification Method:
Protein A purification

Clone ID:
241345A3
Reactivity:
human
GenBank:
BC020063

Conjugate:
Unconjugated
Full name:
CD84 molecule
Gene ID:
8832

Applications

Tested Applications:
Cytometric bead array, Sandwich ELISA

Range:
0.313-40 ng/mL (Cytometric Bead Array)
0.156-10 ng/mL (Sandwich ELISA)

Recommended Dilutions:
It is recommended that this reagent should be titrated in each testing system to obtain optimal results.

Product Information

MP01112-2 targets CD84 in immunoassays as a matched antibody pair. Validated in Cytometric bead array, Sandwich ELISA.

Capture antibody: CD84 Recombinant antibody, PBS Only (Capture) 84245-1-PBS (241342A10). 100 µg. Concentration 1 mg/mL.

Detection antibody: Anti-Human CD84 Rabbit Recombinant Antibody, PBS Only 98108-1-PBS (241345A3). 100 µg. Concentration 1 mg/mL.

Unconjugated rabbit recombinant monoclonal antibody pair in PBS only storage buffer at a concentration of 1 mg/mL, ready for conjugation. Created using Proteintech's proprietary in-house recombinant technology. Recombinant production enables unrivalled batch-to-batch consistency, easy scale-up, and future security of supply.

Matched antibody pairs are designed for use in a variety of assays and platforms that require matched antibody pairs.

Antibody use should be optimized for each application and assay.

Storage

Storage:
Store at -80°C.
Storage buffer:
PBS only

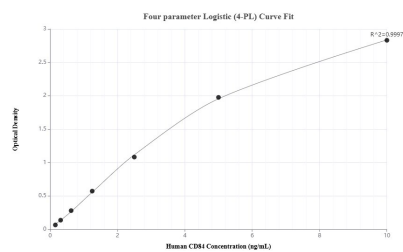
For technical support and original validation data for this product please contact:

T: 1 (888) 4PTGLAB (1-888-478-4522) (toll free in USA), or 1(312) 455-8498 (outside USA)

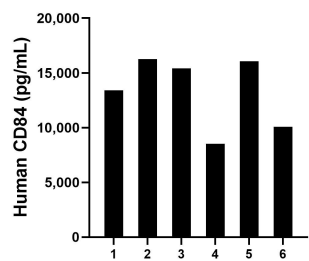
E: proteintech@ptglab.com
W: ptglab.com

This product is exclusively available under Proteintech Group brand and is not available to purchase from any other manufacturer.

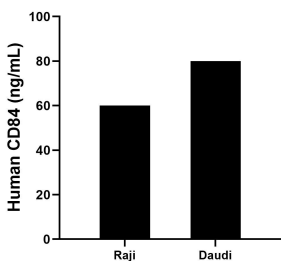
Selected Validation Data



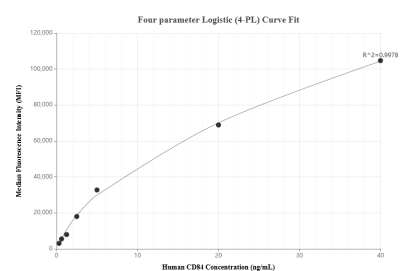
Sandwich ELISA standard curve of MP01112-2, Human CD84 Recombinant Matched Antibody Pair - PBS only. 84245-1-PBS was coated to a plate as the capture antibody and incubated with serial dilutions of standard RP02347. 98108-1-PBS was HRP conjugated as the detection antibody. Range: 0.156-10 ng/mL



Serum of six individual healthy human donors was measured. The human CD84 concentration of detected samples was determined to be 13,292.9 pg/mL with a range of 8,538.9 - 16,254.6 pg/mL.



The mean CD84 concentration was determined to be 59.65 ng/mL in Raji cell extract based on a 1.0 mg/mL extract load and 79.95 ng/mL in Daudi cell extract based on a 1.8 mg/mL extract load.



Cytometric bead array standard curve of MP01112-2, CD84 Recombinant Matched Antibody Pair, PBS Only. Capture antibody: 84245-1-PBS. Detection antibody: 98108-1-PBS. Standard: RP02347. Range: 0.313-40 ng/mL