

IFN-gamma Recombinant Matched Antibody Pair, PBS Only

Catalog Number: **MP01131-1**

Capture Antibody Information

Catalog Number:
84246-3-PBS

Host:
Rabbit

Isotype:
IgG

Purification Method:
Protein A purification

Clone ID:
241390F9

Reactivity:
human

Conjugate:
Unconjugated

Full name:
IFN gamma

Gene ID:
3458

Detection Antibody Information

Catalog Number:
84246-2-PBS

Host:
Rabbit

Isotype:
IgG

Purification Method:
Protein A purification

Clone ID:
241390B1

Reactivity:
human

GenBank:
BC070256

Conjugate:
Unconjugated

Full name:
IFN gamma

Gene ID:
3458

Applications

Tested Applications:
Cytometric bead array, Sandwich ELISA

Range:
0.625-80 ng/mL (Cytometric Bead Array)
7.80-500 pg/mL (Sandwich ELISA)

Recommended Dilutions:
It is recommended that this reagent should be titrated in each testing system to obtain optimal results.

Product Information

MP01131-1 targets IFN-gamma in immunoassays as a matched antibody pair. Validated in Cytometric bead array, Sandwich ELISA.

Capture antibody: IFN-gamma Recombinant antibody, PBS Only (Capture) 84246-3-PBS (241390F9). 100 µg. Concentration 1 mg/mL.

Detection antibody: IFN-gamma Recombinant antibody, PBS Only (Detector) 84246-2-PBS (241390B1). 100 µg. Concentration 1 mg/mL.

Alternative IFN-gamma matched antibody pairs: MP00498-1, MP00498-2, MP01131-2, MP50092-1

Unconjugated rabbit recombinant monoclonal antibody pair in PBS only storage buffer at a concentration of 1 mg/mL, ready for conjugation. Created using Proteintech's proprietary in-house recombinant technology. Recombinant production enables unrivalled batch-to-batch consistency, easy scale-up, and future security of supply.

Matched antibody pairs are designed for use in a variety of assays and platforms that require matched antibody pairs.

Antibody use should be optimized for each application and assay.

Storage

Storage:
Store at -80°C.

Storage buffer:
PBS only

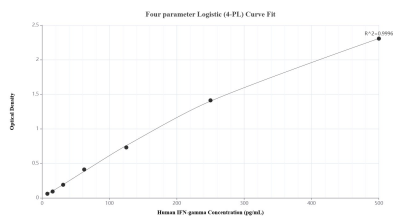
For technical support and original validation data for this product please contact:

T: 1 (888) 4PTGLAB (1-888-478-4522) (toll free in USA), or 1(312) 455-8498 (outside USA)

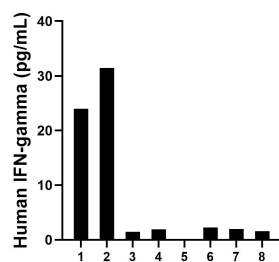
E: proteintech@ptglab.com
W: ptglab.com

This product is exclusively available under Proteintech Group brand and is not available to purchase from any other manufacturer.

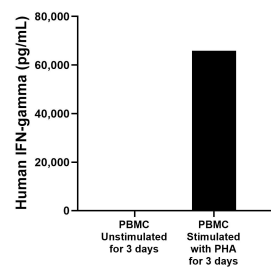
Selected Validation Data



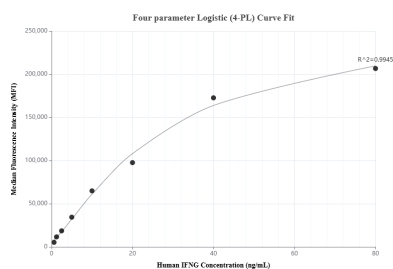
Sandwich ELISA standard curve of MP01131-1, Human IFN-gamma Recombinant Matched Antibody Pair - PBS only. 84246-3-PBS was coated to a plate as the capture antibody and incubated with serial dilutions of standard Eg0004. 84246-2-PBS was HRP conjugated as the detection antibody. Range: 7.80-500 pg/mL.



Serum of eight individual healthy human donors was measured. Six measured less than the lowest human IFN-gamma standard, 7.8 pg/mL. Two samples read 24.0 pg/mL and 31.4 pg/mL.



Human peripheral blood mononuclear cells (PBMC) were cultured unstimulated or stimulated with 10 µg/mL PHA for 3 days. For the PBMC supernatant cultured for 3 days, the mean IFN-gamma concentration was determined to be 6.1 pg/mL in unstimulated PBMC supernatant, 65860.8 pg/mL in PHA stimulated PBMC supernatant.



Cytometric bead array standard curve of MP01131-1, IFNG/IFN-gamma Recombinant Matched Antibody Pair, PBS Only. Capture antibody: 84246-3-PBS. Detection antibody: 84246-2-PBS. Standard:Eg0004. Range: 0.625-80 ng/mL.