

# CD8b Recombinant Matched Antibody Pair, PBS Only

Catalog Number: **MP01133-1**

## Capture Antibody Information

**Catalog Number:**

84240-3-PBS

**Host:**

Rabbit

**Isotype:**

IgG

**Purification Method:**

Protein A purification

**Clone ID:**

241327C1

**Reactivity:**

human

**Conjugate:**

Unconjugated

**Full name:**

CD8b molecule

**Gene ID:**

926

## Detection Antibody Information

**Catalog Number:**

84240-1-PBS

**Host:**

Rabbit

**Isotype:**

IgG

**Purification Method:**

Protein A purification

**Clone ID:**

241326C9

**Reactivity:**

human

**GenBank:**

BC100913

**Conjugate:**

Unconjugated

**Full name:**

CD8b molecule

**Gene ID:**

926

## Applications

**Tested Applications:**

Cytometric bead array, Sandwich ELISA

**Range:**

0.078-10 ng/mL (Cytometric Bead Array)  
39.1-2500 pg/mL (Sandwich ELISA)

**Recommended Dilutions:**

It is recommended that this reagent should be titrated in each testing system to obtain optimal results.

## Product Information

MP01133-1 targets CD8b in immunoassays as a matched antibody pair. Validated in Cytometric bead array, Sandwich ELISA.

Capture antibody: CD8B Recombinant antibody, PBS Only (Capture) 84240-3-PBS (241327C1). 100 µg. Concentration 1 mg/mL.

Detection antibody: CD8B Recombinant antibody, PBS Only (Detector) 84240-1-PBS (241326C9). 100 µg. Concentration 1 mg/mL.

Unconjugated rabbit recombinant monoclonal antibody pair in PBS only storage buffer at a concentration of 1 mg/mL, ready for conjugation. Created using Proteintech's proprietary in-house recombinant technology. Recombinant production enables unrivalled batch-to-batch consistency, easy scale-up, and future security of supply.

Matched antibody pairs are designed for use in a variety of assays and platforms that require matched antibody pairs.

Antibody use should be optimized for each application and assay.

## Storage

**Storage:**

Store at -80°C.

**Storage buffer:**

PBS only

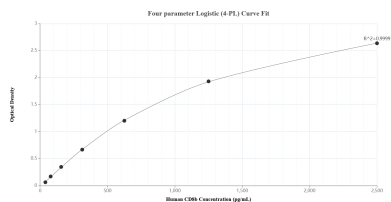
For technical support and original validation data for this product please contact:

T: 1 (888) 4PTGLAB (1-888-478-4522) (toll free in USA), or 1(312) 455-8498 (outside USA)

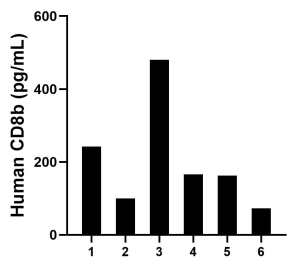
E: [proteintech@ptglab.com](mailto:proteintech@ptglab.com)  
W: [ptglab.com](http://ptglab.com)

This product is exclusively available under Proteintech Group brand and is not available to purchase from any other manufacturer.

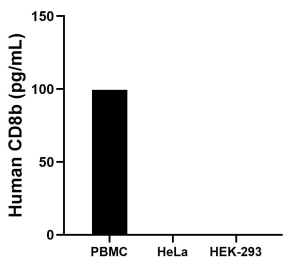
## Selected Validation Data



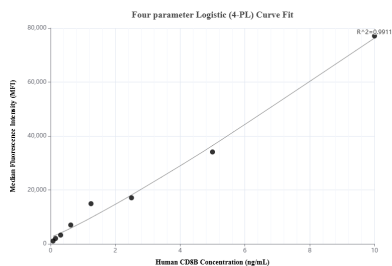
Sandwich ELISA standard curve of MP01133-1, Human CD8b Recombinant Matched Antibody Pair - PBS only. 84240-3-PBS was coated to a plate as the capture antibody and incubated with serial dilutions of standard RP02351. 84240-1-PBS was HRP conjugated as the detection antibody. Range: 39.1-2500 pg/mL.



Serum of six individual healthy human donors was measured. The CD8b concentration of detected samples was determined to be 204 pg/mL with a range of 73-480 pg/mL.



Human peripheral blood mononuclear cells (PBMCs), with HeLa and HEK-293 as negative controls, were cultured for 5 days. The mean concentration of CD8b was measured 99.4 pg/mL in the PBMC supernatant, undetectable in HeLa and HEK-293 supernatants.



Cytometric bead array standard curve of MP01133-1, CD8b Recombinant Matched Antibody Pair, PBS Only. Capture antibody: 84240-3-PBS. Detection antibody: 84240-1-PBS. Standard: RP02351. Range: 0.078-10 ng/mL.