

MLPH Recombinant Matched Antibody Pair, PBS Only

Catalog Number: **MP01196-3**

Capture Antibody Information

Catalog Number:

84282-1-PBS

Host:

Rabbit

Isotype:

IgG

Purification Method:

Protein A purification

Clone ID:

241621G4

Reactivity:

human

Immunogen Catalog Number:

Ag32931

Conjugate:

Unconjugated

Full name:

melanophilin

Gene ID:

79083

Detection Antibody Information

Catalog Number:

84282-4-PBS

Host:

Rabbit

Isotype:

IgG

Purification Method:

Protein A purification

Clone ID:

241621G11

Reactivity:

human

GenBank:

BC001653

Immunogen Catalog Number:

Ag32931

Conjugate:

Unconjugated

Full name:

melanophilin

Gene ID:

79083

Applications

Tested Applications:

Sandwich ELISA

Range:

39.1-2500 pg/mL (Sandwich ELISA)

Recommended Dilutions:

It is recommended that this reagent should be titrated in each testing system to obtain optimal results.

Product Information

MP01196-3 targets MLPH in immunoassays as a matched antibody pair. Validated in Sandwich ELISA.

Capture antibody: MLPH Recombinant antibody, PBS Only (Capture) 84282-1-PBS (241621G4). 100 µg. Concentration 1 mg/mL.

Detection antibody: MLPH Recombinant antibody, PBS Only (Capture/Detector) 84282-4-PBS (241621G11). 100 µg. Concentration 1 mg/mL.

Unconjugated rabbit recombinant monoclonal antibody pair in PBS only storage buffer at a concentration of 1 mg/mL, ready for conjugation. Created using Proteintech's proprietary in-house recombinant technology. Recombinant production enables unrivalled batch-to-batch consistency, easy scale-up, and future security of supply.

Matched antibody pairs are designed for use in a variety of assays and platforms that require matched antibody pairs.

Antibody use should be optimized for each application and assay.

Storage

Storage:

Store at -80°C.

Storage buffer:

PBS only

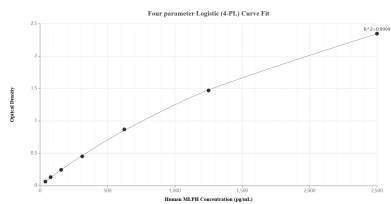
For technical support and original validation data for this product please contact:

T: 1 (888) 4PTGLAB (1-888-478-4522) (toll free in USA), or 1(312) 455-8498 (outside USA)

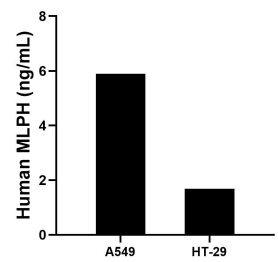
E: proteintech@ptglab.com
W: ptglab.com

This product is exclusively available under Proteintech Group brand and is not available to purchase from any other manufacturer.

Selected Validation Data



Sandwich ELISA standard curve of MP01196-3, Human MLPH Recombinant Matched Antibody Pair - PBS only. 84282-1-PBS was coated to a plate as the capture antibody and incubated with serial dilutions of standard Ag32931. 84282-4-PBS was HRP conjugated as the detection antibody. Range: 39.1-2500 pg/mL.



The mean MLPH concentration was determined to be 5.9 ng/mL in A549 cell extract based on a 1.5 mg/mL extract load and 1.7 ng/mL in HT-29 cell extract based on a 1.5 mg/mL extract load.