

# Mouse TNFRSF9/CD137

## Recombinant Matched Antibody Pair, PBS Only

Catalog Number: **MP01216-1**

### Capture Antibody Information

**Catalog Number:**  
84315-2-PBS

**Host:**  
Rabbit

**Isotype:**  
IgG

**Purification Method:**  
Protein A purification

**Clone ID:**  
241647E11

**Reactivity:**  
mouse

**Conjugate:**  
Unconjugated

**Full name:**  
tumor necrosis factor receptor  
superfamily, member 9

**Gene ID:**  
21942

### Detection Antibody Information

**Catalog Number:**  
84315-3-PBS

**Host:**  
Rabbit

**Isotype:**  
IgG

**Purification Method:**  
Protein A purification

**Clone ID:**  
241647G11

**Reactivity:**  
mouse

**GenBank:**  
NM\_001077509.1

**Conjugate:**  
Unconjugated

**Full name:**  
tumor necrosis factor receptor  
superfamily, member 9

**Gene ID:**  
21942

### Applications

**Tested Applications:**  
Cytometric bead array, Sandwich  
ELISA

**Range:**  
0.078-10 ng/mL (Cytometric Bead  
Array)  
9.77-625 pg/mL (Sandwich ELISA)

**Recommended Dilutions:**  
It is recommended that this reagent  
should be titrated in each testing  
system to obtain optimal results.

### Product Information

MP01216-1 targets TNFRSF9/CD137 in immunoassays as a matched antibody pair. Validated in Cytometric bead array, Sandwich ELISA.

Capture antibody: Mouse 4-1BB/TNFRSF9 Recombinant antibody, PBS Only (Capture) 84315-2-PBS (241647E11). 100 µg. Concentration 1 mg/mL.

Detection antibody: Mouse 4-1BB/TNFRSF9 Recombinant antibody, PBS Only (Detector) 84315-3-PBS (241647G11). 100 µg. Concentration 1 mg/mL.

Alternative TNFRSF9/CD137 matched antibody pairs: MP00870-1, MP00870-2, MP01216-2, MP50110-1

Unconjugated rabbit recombinant monoclonal antibody pair in PBS only storage buffer at a concentration of 1 mg/mL, ready for conjugation. Created using Proteintech's proprietary in-house recombinant technology. Recombinant production enables unrivalled batch-to-batch consistency, easy scale-up, and future security of supply.

Matched antibody pairs are designed for use in a variety of assays and platforms that require matched antibody pairs.

Antibody use should be optimized for each application and assay.

### Storage

**Storage:**  
Store at -80°C.

**Storage buffer:**  
PBS only

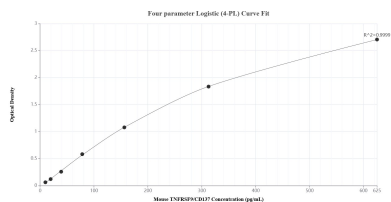
For technical support and original validation data for this product please contact:

T: 1 (888) 4PTGLAB (1-888-478-4522) (toll free  
in USA), or 1(312) 455-8498 (outside USA)

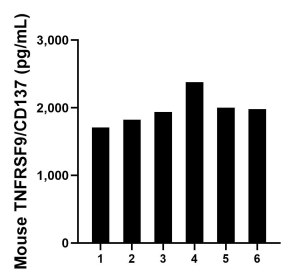
E: [proteintech@ptglab.com](mailto:proteintech@ptglab.com)  
W: [ptglab.com](http://ptglab.com)

**This product is exclusively available under Proteintech  
Group brand and is not available to purchase from any  
other manufacturer.**

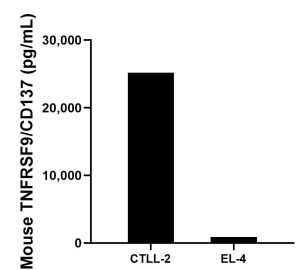
## Selected Validation Data



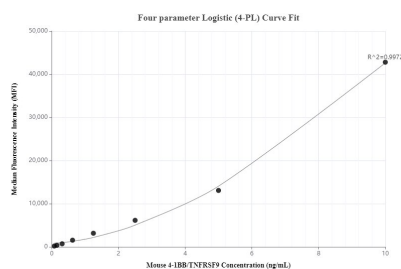
Sandwich ELISA standard curve of MP01216-1, Mouse TNFRSF9/CD137 Recombinant Matched Antibody Pair - PBS only. 84315-2-PBS was coated to a plate as the capture antibody and incubated with serial dilutions of standard Eg1627. 84315-3-PBS was HRP conjugated as the detection antibody. Range: 9.77-625 pg/mL



Serum of six mouse was measured. The TNFRSF9/CD137 concentration of detected samples was determined to be 1971.4 pg/mL with a range of 1707.2 - 2381.3 pg/mL



The mean TNFRSF9/CD137 concentration was determined to be 25182.7 pg/mL in CTL-2 cell extract based on a 0.9 mg/mL extract load and 904.3 ng/mL in EL-4 cell extract based on a 5.2 mg/mL extract load.



Cytometric bead array standard curve of MP01216-1, MOUSE 4-1BB/TNFRSF9 Recombinant Matched Antibody Pair, PBS Only. Capture antibody: 84315-2-PBS. Detection antibody: 84315-3-PBS. Standard: Eg1627. Range: 0.078-10 ng/mL