

For Research Use Only

Alpha-2-Macroglobulin Recombinant Matched Antibody Pair, PBS Only



Catalog Number:MP01224-2

Capture Antibody Information

Catalog Number:
84347-3-PBS

Host:
Rabbit

Isotype:
IgG

Purification Method:
Protein A purification

Clone ID:
241649F7

Reactivity:
human

Conjugate:
Unconjugated

Full name:
alpha-2-macroglobulin

Gene ID:
2

Detection Antibody Information

Catalog Number:
84347-4-PBS

Host:
Rabbit

Isotype:
IgG

Purification Method:
Protein A purification

Clone ID:
241649G3

Reactivity:
human

GenBank:
NM_000014.6

Conjugate:
Unconjugated

Full name:
alpha-2-macroglobulin

Gene ID:
2

Applications

Tested Applications:

Cytometric bead array, Sandwich ELISA

Range:

0.469-60 ng/mL (Cytometric Bead Array)
78.1-5000 pg/mL (Sandwich ELISA)

Recommended Dilutions:

It is recommended that this reagent should be titrated in each testing system to obtain optimal results.

Product Information

MP01224-2 targets Alpha-2-Macroglobulin in immunoassays as a matched antibody pair. Validated in Cytometric bead array, Sandwich ELISA.

Capture antibody: Alpha-2-Macroglobulin Recombinant antibody, PBS Only (Capture) 84347-3-PBS (241649F7). 100 µg. Concentration 1 mg/mL.

Detection antibody: Alpha-2-Macroglobulin Recombinant antibody, PBS Only (Detector) 84347-4-PBS (241649G3). 100 µg. Concentration 1 mg/mL.

Alternative Alpha-2-Macroglobulin matched antibody pairs: MP01224-1, MP01224-3

Unconjugated rabbit recombinant monoclonal antibody pair in PBS only storage buffer at a concentration of 1 mg/mL, ready for conjugation. Created using Proteintech's proprietary in-house recombinant technology. Recombinant production enables unrivalled batch-to-batch consistency, easy scale-up, and future security of supply.

Matched antibody pairs are designed for use in a variety of assays and platforms that require matched antibody pairs.

Antibody use should be optimized for each application and assay.

Storage

Storage:

Store at -80°C.

Storage buffer:
PBS only

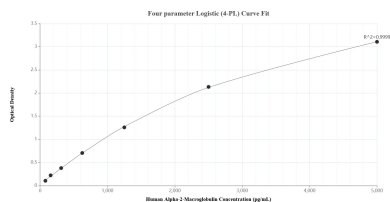
For technical support and original validation data for this product please contact:

T: 1 (888) 4PTGLAB (1-888-478-4522) (toll free in USA), or 1(312) 455-8498 (outside USA)

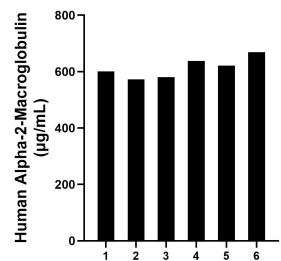
E: proteintech@ptglab.com
W: ptglab.com

This product is exclusively available under Proteintech Group brand and is not available to purchase from any other manufacturer.

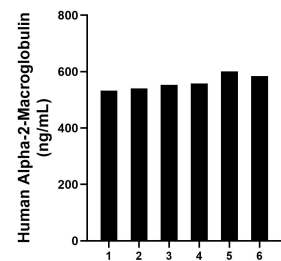
Selected Validation Data



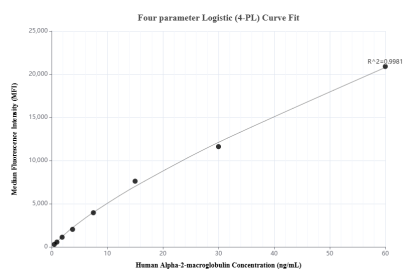
Sandwich ELISA standard curve of MP01224-2, Human Alpha-2-Macroglobulin Recombinant Matched Antibody Pair - PBS only. 84347-3-PBS was coated to a plate as the capture antibody and incubated with serial dilutions of standard Eg1198. 84347-4-PBS was HRP conjugated as the detection antibody. Range: 78.1-5000 µg/mL



Serum of six individual healthy human donors was measured. The Alpha-2-Macroglobulin concentration of detected samples was determined to be 614.0 µg/mL with a range of 573.2-669.4 µg/mL



Human milk of six individual healthy human donors was measured. The Alpha-2-Macroglobulin concentration of detected samples was determined to be 561.6 ng/mL with a range of 532.9-600.9 ng/mL



Cytometric bead array standard curve of MP01224-2, Alpha-2-macroglobulin Recombinant Matched Antibody Pair, PBS Only. Capture antibody: 84347-3-PBS. Detection antibody: 84347-4-PBS. Standard: Eg1198. Range: 0.469-60 ng/mL