

Alpha-2-Macroglobulin Recombinant Matched Antibody Pair, PBS Only

Catalog Number: **MP01224-3**

Capture Antibody Information

Catalog Number:

84347-1-PBS

Host:

Rabbit

Isotype:

IgG

Purification Method:

Protein A purification

Clone ID:

241649D11

Reactivity:

human

Conjugate:

Unconjugated

Full name:

alpha-2-macroglobulin

Gene ID:

2

Detection Antibody Information

Catalog Number:

84347-4-PBS

Host:

Rabbit

Isotype:

IgG

Purification Method:

Protein A purification

Clone ID:

241649G3

Reactivity:

human

GenBank:

NM_000014.6

Conjugate:

Unconjugated

Full name:

alpha-2-macroglobulin

Gene ID:

2

Applications

Tested Applications:

Cytometric bead array

Range:

0.469-60 ng/mL (Cytometric Bead Array)

Recommended Dilutions:

It is recommended that this reagent should be titrated in each testing system to obtain optimal results.

Product Information

MP01224-3 targets Alpha-2-Macroglobulin in immunoassays as a matched antibody pair. Validated in Cytometric bead array.

Capture antibody: Alpha-2-Macroglobulin Recombinant antibody, PBS Only (Capture) 84347-1-PBS (241649D11). 100 µg. Concentration 1 mg/ml.

Detection antibody: Alpha-2-Macroglobulin Recombinant antibody, PBS Only (Detector) 84347-4-PBS (241649G3). 100 µg. Concentration 1 mg/ml.

Alternative Alpha-2-Macroglobulin matched antibody pairs: MP01224-1, MP01224-2

Unconjugated rabbit recombinant monoclonal antibody pair in PBS only storage buffer at a concentration of 1 mg/mL, ready for conjugation. Created using Proteintech's proprietary in-house recombinant technology. Recombinant production enables unrivalled batch-to-batch consistency, easy scale-up, and future security of supply.

Matched antibody pairs are designed for use in a variety of assays and platforms that require matched antibody pairs.

Antibody use should be optimized for each application and assay.

Storage

Storage:

Store at -80°C.

Storage buffer:

PBS only

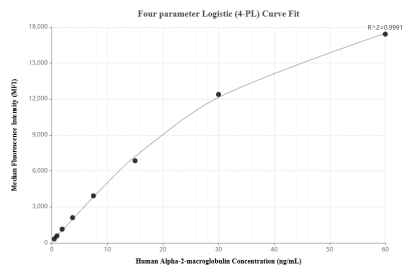
For technical support and original validation data for this product please contact:

T: 1 (888) 4PTGLAB (1-888-478-4522) (toll free in USA), or 1(312) 455-8498 (outside USA)

E: proteintech@ptglab.com
W: ptglab.com

This product is exclusively available under Proteintech Group brand and is not available to purchase from any other manufacturer.

Selected Validation Data



Cytometric bead array standard curve of MP01224-3, Alpha-2-macroglobulin Recombinant Matched Antibody Pair, PBS Only. Capture antibody: 84347-1-PBS. Detection antibody: 84347-4-PBS. Standard: Eg1198. Range: 0.469-60 ng/mL