

LIMK2 Recombinant Matched Antibody Pair, PBS Only

Catalog Number: **MP01226-2**

Capture Antibody Information

Catalog Number: 82977-2-PBS	Clone ID: 230283H8	Conjugate: Unconjugated
Host: Rabbit	Reactivity: human	Full name: LIM domain kinase 2
Isotype: IgG	Immunogen Catalog Number: Ag3011	Gene ID: 3985
Purification Method: Protein A purification		

Detection Antibody Information

Catalog Number: 82977-3-PBS	Clone ID: 230283E12	Conjugate: Unconjugated
Host: Rabbit	Reactivity: human	Full name: LIM domain kinase 2
Isotype: IgG	GenBank: BC013051	Gene ID: 3985
Purification Method: Protein A purification	Immunogen Catalog Number: Ag3011	

Applications

Tested Applications: Sandwich ELISA	Range: 0.39-25 ng/mL (Sandwich ELISA)	Recommended Dilutions: It is recommended that this reagent should be titrated in each testing system to obtain optimal results.
---	---	---

Product Information

MP01226-2 targets LIMK2 in immunoassays as a matched antibody pair. Validated in Sandwich ELISA.

Capture antibody: LIMK2 Recombinant antibody, PBS Only (Capture) 82977-2-PBS (230283H8). 100 µg. Concentration 1 mg/mL.

Detection antibody: LIMK2 Recombinant antibody, PBS Only (Detector) 82977-3-PBS (230283E12). 100 µg. Concentration 1 mg/mL.

Unconjugated rabbit recombinant monoclonal antibody pair in PBS only storage buffer at a concentration of 1 mg/mL, ready for conjugation. Created using Proteintech's proprietary in-house recombinant technology. Recombinant production enables unrivalled batch-to-batch consistency, easy scale-up, and future security of supply.

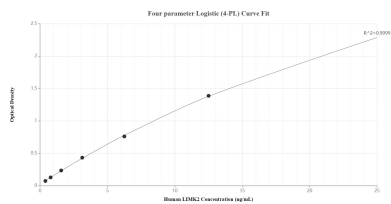
Matched antibody pairs are designed for use in a variety of assays and platforms that require matched antibody pairs.

Antibody use should be optimized for each application and assay.

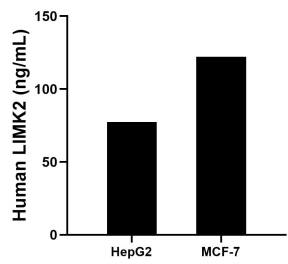
Storage

Storage:
Store at -80°C.
Storage buffer:
PBS only

Selected Validation Data



Sandwich ELISA standard curve of MP01226-2, Human LIMK2 Recombinant Matched Antibody Pair - PBS only. 82977-2-PBS was coated to a plate as the capture antibody and incubated with serial dilutions of standard Ag3011. 82977-3-PBS was HRP conjugated as the detection antibody. Range: 0.39-25 ng/mL



The mean LIMK2 concentration was determined to be 77.33 ng/mL in HepG2 cell extract based on a 1.20 mg/mL extract load and 122.10 ng/mL in MCF-7 cell extract based on a 1.20 mg/mL extract load.