

For Research Use Only

PDGFR alpha/CD140a Recombinant Matched Antibody Pair, PBS Only



Catalog Number:MP01256-4

Capture Antibody Information

Catalog Number:
84383-7-PBS
Host:
Rabbit
Isotype:
IgG
Purification Method:
Protein A purification

Clone ID:
241658B1
Reactivity:
human

Conjugate:
Unconjugated
Full name:
platelet-derived growth factor
receptor, alpha polypeptide
Gene ID:
5156

Detection Antibody Information

Catalog Number:
98141-1-PBS
Host:
Rabbit
Isotype:
IgG
Purification Method:
Protein A purification

Clone ID:
241658H4
Reactivity:
human
GenBank:
BC015186

Conjugate:
Unconjugated
Full name:
platelet-derived growth factor
receptor, alpha polypeptide
Gene ID:
5156

Applications

Tested Applications:
Sandwich ELISA

Range:
39.1-2500 pg/mL (Sandwich ELISA)

Recommended Dilutions:
It is recommended that this reagent
should be titrated in each testing
system to obtain optimal results.

Product Information

MP01256-4 targets PDGFR alpha/CD140a in immunoassays as a matched antibody pair. Validated in Sandwich ELISA.

Capture antibody: PDGFR alpha/CD140a Recombinant antibody, PBS Only (Capture) 84383-7-PBS (241658B1). 100 µg. Concentration 1 mg/mL.

Detection antibody: Anti-Human PDGFR alpha/CD140a Rabbit Recombinant Antibody, PBS Only (Detector) 98141-1-PBS (241658H4). 100 µg. Concentration 1 mg/mL.

Unconjugated rabbit recombinant monoclonal antibody pair in PBS only storage buffer at a concentration of 1 mg/mL, ready for conjugation. Created using Proteintech's proprietary in-house recombinant technology. Recombinant production enables unrivalled batch-to-batch consistency, easy scale-up, and future security of supply.

Matched antibody pairs are designed for use in a variety of assays and platforms that require matched antibody pairs.

Antibody use should be optimized for each application and assay.

Storage

Storage:
Store at -80°C.
Storage buffer:
PBS only

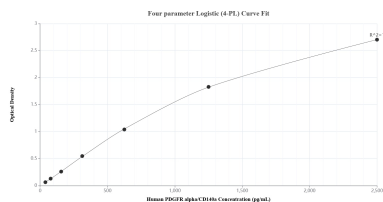
For technical support and original validation data for this product please contact:

T: 1 (888) 4PTGLAB (1-888-478-4522) (toll free
in USA), or 1(312) 455-8498 (outside USA)

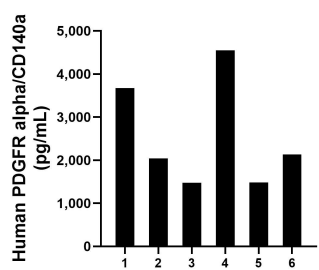
E: proteintech@ptglab.com
W: ptglab.com

This product is exclusively available under Proteintech Group brand and is not available to purchase from any other manufacturer.

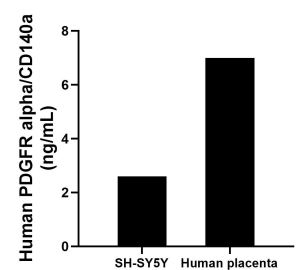
Selected Validation Data



Sandwich ELISA standard curve of MP01256-4, Human PDGFR alpha/CD140a Recombinant Matched Antibody Pair - PBS only. 84383-7-PBS was coated to a plate as the capture antibody and incubated with serial dilutions of standard RP00003. 98141-1-PBS was HRP conjugated as the detection antibody. Range: 39.1-2500 pg/mL



Serum of six individual healthy human donors was measured. The PDGFR alpha/CD140a concentration of detected samples was determined to be 2,557.7 pg/mL with a range of 1,472.3-4,545.6 pg/mL



The mean PDGFR alpha/CD140a concentration was determined to be 2.6 ng/mL in SH-SY5Y cell extract based on a 1.0 mg/mL extract load and 7.0 ng/mL in human placenta tissue extract based on a 1.7 mg/mL extract load.