

# CD89 Recombinant Matched Antibody Pair, PBS Only

Catalog Number: **MP01257-2**

## Capture Antibody Information

**Catalog Number:**  
84384-3-PBS  
**Host:**  
Rabbit  
**Isotype:**  
IgG  
**Purification Method:**  
Protein A purification

**Clone ID:**  
241426D1  
**Reactivity:**  
human

**Conjugate:**  
Unconjugated  
**Full name:**  
Fc fragment of IgA, receptor for  
**Gene ID:**  
2204

## Detection Antibody Information

**Catalog Number:**  
84384-1-PBS  
**Host:**  
Rabbit  
**Isotype:**  
IgG  
**Purification Method:**  
Protein A purification

**Clone ID:**  
241425B2  
**Reactivity:**  
human  
**GenBank:**  
BC027953

**Conjugate:**  
Unconjugated  
**Full name:**  
Fc fragment of IgA, receptor for  
**Gene ID:**  
2204

## Applications

**Tested Applications:**  
Cytometric bead array, Sandwich ELISA

**Range:**  
0.156-10 ng/mL (Cytometric Bead Array)  
19.5-1250 pg/mL (Sandwich ELISA)

**Recommended Dilutions:**  
It is recommended that this reagent should be titrated in each testing system to obtain optimal results.

## Product Information

MP01257-2 targets CD89 in immunoassays as a matched antibody pair. Validated in Cytometric bead array, Sandwich ELISA.

Capture antibody: FCAR Recombinant antibody, PBS Only (Capture) 84384-3-PBS (241426D1). 100 µg. Concentration 1 mg/mL.

Detection antibody: FCAR Recombinant antibody, PBS Only (Detector) 84384-1-PBS (241425B2). 100 µg. Concentration 1 mg/mL.

Unconjugated rabbit recombinant monoclonal antibody pair in PBS only storage buffer at a concentration of 1 mg/mL, ready for conjugation. Created using Proteintech's proprietary in-house recombinant technology. Recombinant production enables unrivalled batch-to-batch consistency, easy scale-up, and future security of supply.

Matched antibody pairs are designed for use in a variety of assays and platforms that require matched antibody pairs.

Antibody use should be optimized for each application and assay.

## Storage

**Storage:**  
Store at -80°C.  
**Storage buffer:**  
PBS only

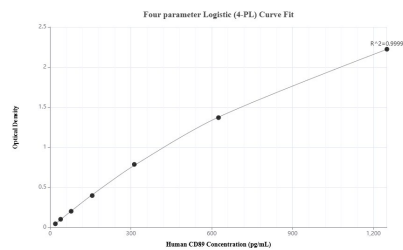
For technical support and original validation data for this product please contact:

T: 1 (888) 4PTGLAB (1-888-478-4522) (toll free in USA), or 1(312) 455-8498 (outside USA)

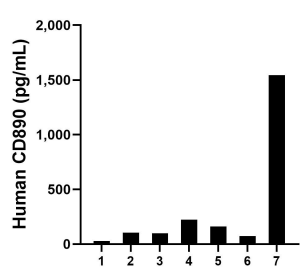
E: [proteintech@ptglab.com](mailto:proteintech@ptglab.com)  
W: [ptglab.com](http://ptglab.com)

**This product is exclusively available under Proteintech Group brand and is not available to purchase from any other manufacturer.**

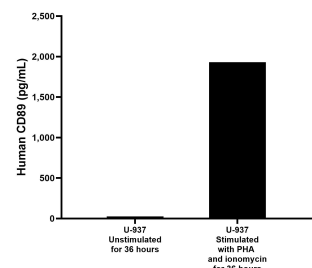
## Selected Validation Data



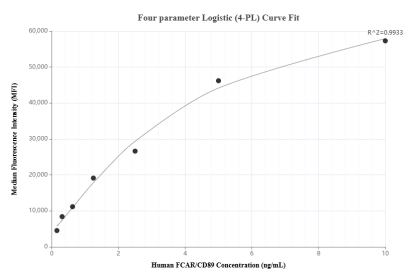
Sandwich ELISA standard curve of MP01257-2, Human CD89 Recombinant Matched Antibody Pair - PBS only. 84384-3-PBS was coated to a plate as the capture antibody and incubated with serial dilutions of standard RP02338. 84384-1-PBS was HRP conjugated as the detection antibody. Range: 19.5-1250 pg/mL



Serum of seven individual healthy human donors was measured. The human CD89 concentration of detected samples was determined to be 319.2 pg/mL with a range of 27.5 - 1,544.1 pg/mL



U-937 cells were cultured unstimulated or stimulated with 10 µg/mL PHA and 1 µg/ml ionomycin for 36 hours. The mean CD89 concentration was determined to be 25.5 pg/mL in unstimulated U-937 supernatant, 1,931.0 pg/mL in stimulated U-937 supernatant.



Cytometric bead array standard curve of MP01257-2, CD89 Recombinant Matched Antibody Pair, PBS Only. Capture antibody: 84384-3-PBS. Detection antibody: 84384-1-PBS. Standard: RP02338. Range: 0.156-10 ng/mL