

ATG9A Recombinant Matched Antibody Pair, PBS Only

Catalog Number: **MP01278-1**

Capture Antibody Information

Catalog Number:

84433-1-PBS

Host:

Rabbit

Isotype:

IgG

Purification Method:

Protein A purification

Clone ID:

241652E5

Reactivity:

human

Immunogen Catalog Number:

Ag24212

Conjugate:

Unconjugated

Full name:

ATG9 autophagy related 9 homolog A
(*S. cerevisiae*)

Gene ID:

79065

Detection Antibody Information

Catalog Number:

84433-2-PBS

Host:

Rabbit

Isotype:

IgG

Purification Method:

Protein A purification

Clone ID:

241652F9

Reactivity:

human

GenBank:

BC065534

Immunogen Catalog Number:

Ag24212

Conjugate:

Unconjugated

Full name:

ATG9 autophagy related 9 homolog A
(*S. cerevisiae*)

Gene ID:

79065

Applications

Tested Applications:

Cytometric bead array, Sandwich
ELISA

Range:

0.313-40 ng/mL (Cytometric Bead
Array)
1.56-100 ng/mL (Sandwich ELISA)

Recommended Dilutions:

It is recommended that this reagent
should be titrated in each testing
system to obtain optimal results.

Product Information

MP01278-1 targets ATG9A in immunoassays as a matched antibody pair. Validated in Cytometric bead array, Sandwich ELISA.

Capture antibody: ATG9A Recombinant antibody, PBS Only (Capture) 84433-1-PBS (241652E5). 100 µg.
Concentration 1 mg/mL.

Detection antibody: ATG9A Recombinant antibody, PBS Only (Detector) 84433-2-PBS (241652F9). 100 µg.
Concentration 1 mg/mL.

Unconjugated rabbit recombinant monoclonal antibody pair in PBS only storage buffer at a concentration of 1 mg/mL, ready for conjugation. Created using Proteintech's proprietary in-house recombinant technology. Recombinant production enables unrivalled batch-to-batch consistency, easy scale-up, and future security of supply.

Matched antibody pairs are designed for use in a variety of assays and platforms that require matched antibody pairs.

Antibody use should be optimized for each application and assay.

Storage

Storage:

Store at -80°C.

Storage buffer:

PBS only

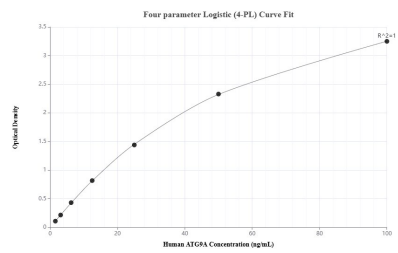
For technical support and original validation data for this product please contact:

T: 1 (888) 4PTGLAB (1-888-478-4522) (toll free
in USA), or 1(312) 455-8498 (outside USA)

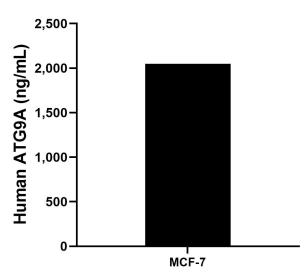
E: proteintech@ptglab.com
W: ptglab.com

This product is exclusively available under Proteintech Group brand and is not available to purchase from any other manufacturer.

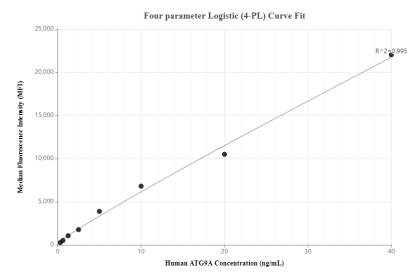
Selected Validation Data



Sandwich ELISA standard curve of MP01278-1, Human ATG9A Recombinant Matched Antibody Pair - PBS only. 84433-1-PBS was coated to a plate as the capture antibody and incubated with serial dilutions of standard Ag24212. 84433-2-PBS was HRP conjugated as the detection antibody. Range: 1.56-100 ng/mL



The mean ATG9A concentration was determined to be 2,049.94 ng/mL in MCF-7 cell extract based on a 1.2 mg/mL extract load.



Cytometric bead array standard curve of MP01278-1, ATG9A Recombinant Matched Antibody Pair, PBS Only. Capture antibody: 84433-1-PBS. Detection antibody: 84433-2-PBS. Standard: Ag24212. Range: 0.313-40 ng/mL