

CD45 Recombinant Matched Antibody Pair, PBS Only

Catalog Number: **MP01280-2**

Capture Antibody Information

Catalog Number:
84405-2-PBS
Host:
Rabbit
Isotype:
IgG
Purification Method:
Protein A purification

Clone ID:
241670F1
Reactivity:
human

Conjugate:
Unconjugated
Full name:
protein tyrosine phosphatase, receptor type, C
Gene ID:
5788

Detection Antibody Information

Catalog Number:
84405-1-PBS
Host:
Rabbit
Isotype:
IgG
Purification Method:
Protein A purification

Clone ID:
241670C10
Reactivity:
human
GenBank:

Conjugate:
Unconjugated
Full name:
protein tyrosine phosphatase, receptor type, C
Gene ID:
5788

Applications

Tested Applications:
Cytometric bead array

Range:
0.625-40 ng/mL (Cytometric Bead Array)

Recommended Dilutions:
It is recommended that this reagent should be titrated in each testing system to obtain optimal results.

Product Information

MP01280-2 targets CD45 in immunoassays as a matched antibody pair. Validated in Cytometric bead array.

Capture antibody: CD45(220-577) Recombinant antibody, PBS Only (Capture/Detector) 84405-2-PBS (241670F1). 100 µg. Concentration 1 mg/mL.

Detection antibody: CD45(220-577) Recombinant antibody, PBS Only (Detector) 84405-1-PBS (241670C10). 100 µg. Concentration 1 mg/mL.

Unconjugated rabbit recombinant monoclonal antibody pair in PBS only storage buffer at a concentration of 1 mg/mL, ready for conjugation. Created using Proteintech's proprietary in-house recombinant technology. Recombinant production enables unrivalled batch-to-batch consistency, easy scale-up, and future security of supply.

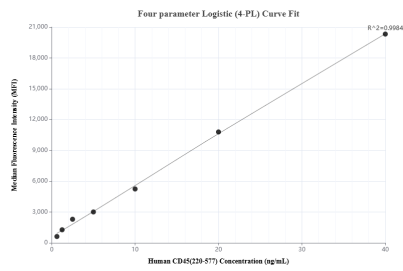
Matched antibody pairs are designed for use in a variety of assays and platforms that require matched antibody pairs.

Antibody use should be optimized for each application and assay.

Storage

Storage:
Store at -80°C.
Storage buffer:
PBS only

Selected Validation Data



Cytometric bead array standard curve of MP01280-2, CD45 Recombinant Matched Antibody Pair, PBS Only. Capture antibody: 84405-2-PBS. Detection antibody: 84405-1-PBS. Standard: Eg2486. Range: 0.625-40 ng/mL