

IL-1 alpha Recombinant Matched Antibody Pair, PBS Only

Catalog Number: **MP01289-3**

Capture Antibody Information

Catalog Number:

84411-2-PBS

Host:

Rabbit

Isotype:

IgG

Purification Method:

Protein A purification

Clone ID:

241752E8

Reactivity:

human

Immunogen Catalog Number:

HZ-1320

Conjugate:

Unconjugated

Full name:

interleukin 1, alpha

Gene ID:

3552

Detection Antibody Information

Catalog Number:

84411-3-PBS

Host:

Rabbit

Isotype:

IgG

Purification Method:

Protein A purification

Clone ID:

241752F11

Reactivity:

human

GenBank:

BC013142

Immunogen Catalog Number:

HZ-1320

Conjugate:

Unconjugated

Full name:

interleukin 1, alpha

Gene ID:

3552

Applications

Tested Applications:

Sandwich ELISA

Range:

9.77-313 pg/mL (Sandwich ELISA)

Recommended Dilutions:

It is recommended that this reagent should be titrated in each testing system to obtain optimal results.

Product Information

MP01289-3 targets IL-1 alpha in immunoassays as a matched antibody pair. Validated in Sandwich ELISA.

Capture antibody: IL1A Recombinant antibody, PBS Only (Capture) 84411-2-PBS (241752E8). 100 µg. Concentration 1 mg/mL.

Detection antibody: IL1A Recombinant antibody, PBS Only (Capture/Detector) 84411-3-PBS (241752F11). 100 µg. Concentration 1 mg/mL.

Unconjugated rabbit recombinant monoclonal antibody pair in PBS only storage buffer at a concentration of 1 mg/mL, ready for conjugation. Created using Proteintech's proprietary in-house recombinant technology. Recombinant production enables unrivalled batch-to-batch consistency, easy scale-up, and future security of supply.

Matched antibody pairs are designed for use in a variety of assays and platforms that require matched antibody pairs.

Antibody use should be optimized for each application and assay.

Storage

Storage:

Store at -80°C.

Storage buffer:

PBS only

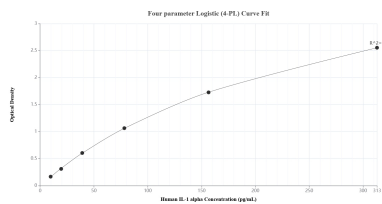
For technical support and original validation data for this product please contact:

T: 1 (888) 4PTGLAB (1-888-478-4522) (toll free in USA), or 1(312) 455-8498 (outside USA)

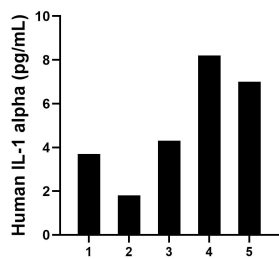
E: proteintech@ptglab.com
W: ptglab.com

This product is exclusively available under Proteintech Group brand and is not available to purchase from any other manufacturer.

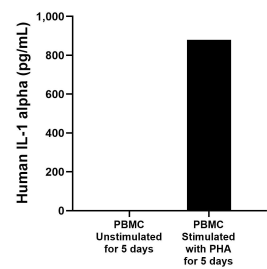
Selected Validation Data



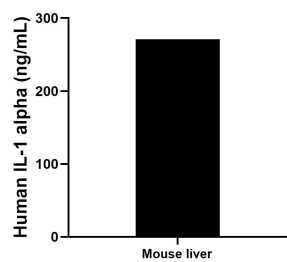
Sandwich ELISA standard curve of MP01289-3, Human IL-1 alpha Recombinant Matched Antibody Pair - PBS only. 84411-2-PBS was coated to a plate as the capture antibody and incubated with serial dilutions of standard HZ-1320. 84411-3-PBS was HRP conjugated as the detection antibody. Range: 9.77-313 pg/mL



Serum of five individual healthy human donors was measured. The IL-1 alpha concentration of detected samples was determined to be 5.0 pg/mL with a range of 1.8-8.2 pg/mL



Human peripheral blood mononuclear cells (PBMC) were cultured unstimulated or stimulated with 10 µg/mL PHA for 5 days. The mean IL-1 alpha concentration was determined to be 2.1 pg/mL in unstimulated PBMC supernatant, 880.0 pg/mL in PHA stimulated PBMC supernatant.



The mean IL-1 alpha concentration was determined to be 271.0 ng/mL in mouse liver tissue extract based on a 3.7 mg/mL extract load.