

Rat IL-4 Recombinant Matched Antibody Pair, PBS Only

Catalog Number: **MP01293-4**

Capture Antibody Information

Catalog Number:
84422-3-PBS
Host:
Rabbit
Isotype:
IgG
Purification Method:
Protein A purification

Clone ID:
241249E11
Reactivity:
rat

Conjugate:
Unconjugated
Full name:
interleukin 4
Gene ID:
287287

Detection Antibody Information

Catalog Number:
84422-5-PBS
Host:
Rabbit
Isotype:
IgG
Purification Method:
Protein A purification

Clone ID:
241249H7
Reactivity:
rat
GenBank:
NM_201270.1

Conjugate:
Unconjugated
Full name:
interleukin 4
Gene ID:
287287

Applications

Tested Applications:
Sandwich ELISA

Range:
39.1-2500 pg/mL (Sandwich ELISA)

Recommended Dilutions:
It is recommended that this reagent should be titrated in each testing system to obtain optimal results.

Product Information

MP01293-4 targets IL-4 in immunoassays as a matched antibody pair. Validated in Sandwich ELISA.

Capture antibody: Rat IL-4 Recombinant antibody, PBS Only (Capture) 84422-3-PBS (241249E11). 100 µg. Concentration 1 mg/mL.

Detection antibody: Rat IL-4 Recombinant antibody, PBS Only (Capture/Detector) 84422-5-PBS (241249H7). 100 µg. Concentration 1 mg/mL.

Unconjugated rabbit recombinant monoclonal antibody pair in PBS only storage buffer at a concentration of 1 mg/mL, ready for conjugation. Created using Proteintech's proprietary in-house recombinant technology. Recombinant production enables unrivalled batch-to-batch consistency, easy scale-up, and future security of supply.

Matched antibody pairs are designed for use in a variety of assays and platforms that require matched antibody pairs.

Antibody use should be optimized for each application and assay.

Storage

Storage:
Store at -80°C.
Storage buffer:
PBS only

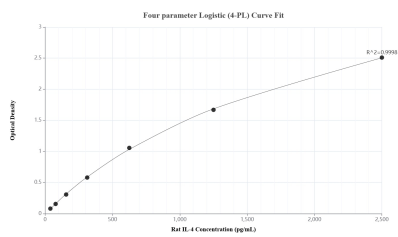
For technical support and original validation data for this product please contact:

T: 1 (888) 4PTGLAB (1-888-478-4522) (toll free in USA), or 1(312) 455-8498 (outside USA)

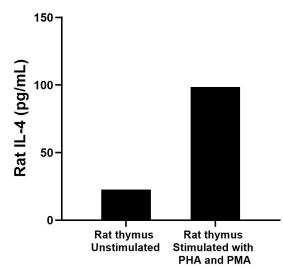
E: proteintech@ptglab.com
W: ptglab.com

This product is exclusively available under Proteintech Group brand and is not available to purchase from any other manufacturer.

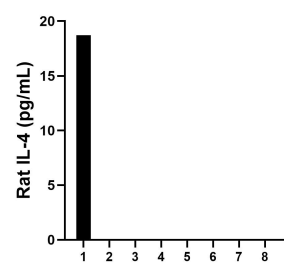
Selected Validation Data



Sandwich ELISA standard curve of MP01293-4, Rat IL-4 Recombinant Matched Antibody Pair - PBS only. 84422-3-PBS was coated to a plate as the capture antibody and incubated with serial dilutions of standard Eg1113. 84422-5-PBS was Biotin conjugated as the detection antibody. Range: 39.1-2500 pg/mL.



One rat thymus was cultured for 18 hours in RPMI 1640 supplemented with 10% fetal bovine serum, 50 μ M β -mercaptoethanol, 2 mM L-glutamine, and 100 μ g/mL of streptomycin sulfate. The cells were stimulated with 5 μ g/mL of PHA and 50 ng/mL of PMA for 7 days. An aliquot of the cell culture supernatant was removed, assayed for rat IL-4 and measured 98.5 pg/mL.



Serum of eight individual healthy human donors was measured. Seven measured less than the lowest rat IL-4 standard, 39.1 pg/mL. One sample read 18.7 pg/mL.