

CD40 Recombinant Matched Antibody Pair, PBS Only

Catalog Number: **MP01294-3**

Capture Antibody Information

Catalog Number:
84406-3-PBS
Host:
Rabbit
Isotype:
IgG
Purification Method:
Protein A purification

Clone ID:
241760C3
Reactivity:
human

Conjugate:
Unconjugated
Full name:
CD40 molecule, TNF receptor superfamily member 5
Gene ID:
958

Detection Antibody Information

Catalog Number:
84406-5-PBS
Host:
Rabbit
Isotype:
IgG
Purification Method:
Protein A purification

Clone ID:
241760F4
Reactivity:
human
GenBank:
NM_001250.6

Conjugate:
Unconjugated
Full name:
CD40 molecule, TNF receptor superfamily member 5
Gene ID:
958

Applications

Tested Applications:
Sandwich ELISA

Range:
78.1-5000 pg/mL (Sandwich ELISA)

Recommended Dilutions:
It is recommended that this reagent should be titrated in each testing system to obtain optimal results.

Product Information

MP01294-3 targets CD40 in immunoassays as a matched antibody pair. Validated in Sandwich ELISA.

Capture antibody: CD40 Recombinant antibody, PBS Only (Capture) 84406-3-PBS (241760C3). 100 µg. Concentration 1 mg/mL.

Detection antibody: CD40 Recombinant antibody, PBS Only (Detector) 84406-5-PBS (241760F4). 100 µg. Concentration 1 mg/mL.

Alternative CD40 matched antibody pairs: MP01294-1, MP01294-2, MP50064-1

Unconjugated rabbit recombinant monoclonal antibody pair in PBS only storage buffer at a concentration of 1 mg/mL, ready for conjugation. Created using Proteintech's proprietary in-house recombinant technology. Recombinant production enables unrivalled batch-to-batch consistency, easy scale-up, and future security of supply.

Matched antibody pairs are designed for use in a variety of assays and platforms that require matched antibody pairs.

Antibody use should be optimized for each application and assay.

Storage

Storage:
Store at -80°C.
Storage buffer:
PBS only

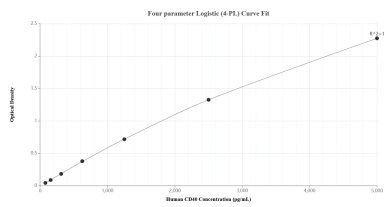
For technical support and original validation data for this product please contact:

T: 1 (888) 4PTGLAB (1-888-478-4522) (toll free in USA), or 1(312) 455-8498 (outside USA)

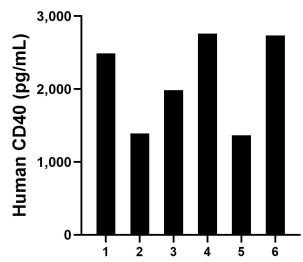
E: proteintech@ptglab.com
W: ptglab.com

This product is exclusively available under Proteintech Group brand and is not available to purchase from any other manufacturer.

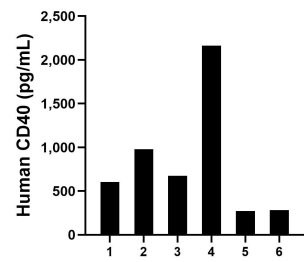
Selected Validation Data



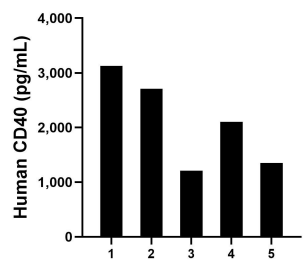
Sandwich ELISA standard curve of MP01294-3, Human CD40 Recombinant Matched Antibody Pair - PBS only. 84406-3-PBS was coated to a plate as the capture antibody and incubated with serial dilutions of standard Eg1797. 84406-5-PBS was HRP conjugated as the detection antibody. Range: 78.1-5000 pg/mL



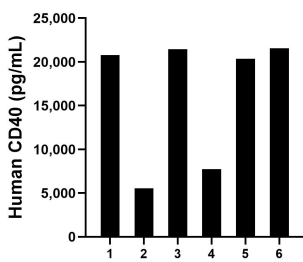
Serum of six individual healthy human donors was measured. The CD40 concentration of detected samples was determined to be 2,121.2 pg/mL with a range of 1,366.2-2,760.0 pg/mL



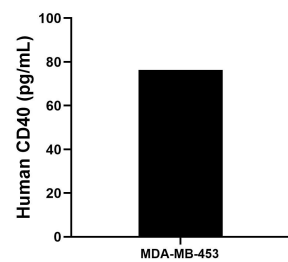
Saliva of six individual healthy human donors was measured. The CD40 concentration of detected samples was determined to be 829.1 pg/mL with a range of 270.5-2,164.5 pg/mL



Human milk of five individual healthy human donors was measured. The CD40 concentration of detected samples was determined to be 2,099.7 pg/mL with a range of 1,212.9-3,125.0 pg/mL



Urine of six individual healthy human donors was measured. The CD40 concentration of detected samples was determined to be 1,6246.6 pg/mL with a range of 5,532.8-21,569.7 pg/mL



MDA-MB-453 were cultured in DMEM supplemented with 10% fetal bovine serum, 2.5 mM L-glutamine, 100 U/mL penicillin, and 100 µg/mL streptomycin sulfate. An aliquot of the cell culture supernate was removed, assayed for human CD40, and measured 76.3 pg/mL