

Mouse CD141/Thrombomodulin Recombinant Matched Antibody Pair, PBS Only

Catalog Number: **MP01300-2**

Capture Antibody Information

Catalog Number:
84412-3-PBS
Host:
Rabbit
Isotype:
IgG
Purification Method:
Protein A purification

Clone ID:
241730D4
Reactivity:
mouse

Conjugate:
Unconjugated
Full name:
thrombomodulin
Gene ID:
21824

Detection Antibody Information

Catalog Number:
84412-1-PBS
Host:
Rabbit
Isotype:
IgG
Purification Method:
Protein A purification

Clone ID:
241730A6
Reactivity:
mouse
GenBank:
NM_009378.3

Conjugate:
Unconjugated
Full name:
thrombomodulin
Gene ID:
21824

Applications

Tested Applications:
Cytometric bead array, Sandwich
ELISA

Range:
0.781-100 ng/mL (Cytometric Bead
Array)
0.156-10 ng/mL (Sandwich ELISA)

Recommended Dilutions:
It is recommended that this reagent
should be titrated in each testing
system to obtain optimal results.

Product Information

MP01300-2 targets CD141/Thrombomodulin in immunoassays as a matched antibody pair. Validated in Cytometric bead array, Sandwich ELISA.

Capture antibody: Mouse CD141/Thrombomodulin Recombinant antibody, PBS Only (Capture) 84412-3-PBS (241730D4). 100 µg. Concentration 1 mg/mL.

Detection antibody: Mouse Thrombomodulin Recombinant antibody, PBS Only (Detector) 84412-1-PBS (241730A6). 100 µg. Concentration 1 mg/mL.

Unconjugated rabbit recombinant monoclonal antibody pair in PBS only storage buffer at a concentration of 1 mg/mL, ready for conjugation. Created using Proteintech's proprietary in-house recombinant technology. Recombinant production enables unrivalled batch-to-batch consistency, easy scale-up, and future security of supply.

Matched antibody pairs are designed for use in a variety of assays and platforms that require matched antibody pairs.

Antibody use should be optimized for each application and assay.

Storage

Storage:
Store at -80°C.
Storage buffer:
PBS only

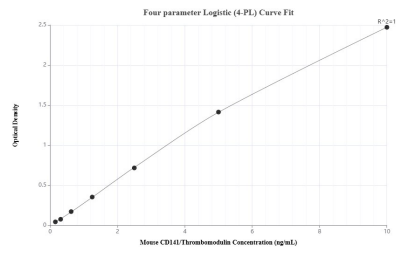
For technical support and original validation data for this product please contact:

T: 1 (888) 4PTGLAB (1-888-478-4522) (toll free
in USA), or 1(312) 455-8498 (outside USA)

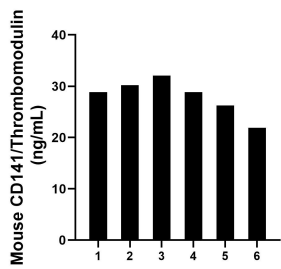
E: proteintech@ptglab.com
W: ptglab.com

This product is exclusively available under Proteintech Group brand and is not available to purchase from any other manufacturer.

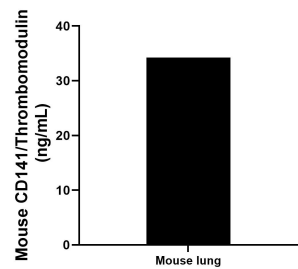
Selected Validation Data



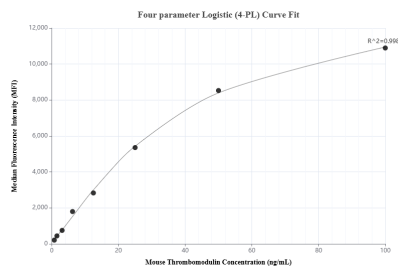
Sandwich ELISA standard curve of MP01300-2, Mouse CD141/Thrombomodulin Recombinant Matched Antibody Pair - PBS only. 84412-3-PBS was coated to a plate as the capture antibody and incubated with serial dilutions of standard Eg1139. 84412-1-PBS was HRP conjugated as the detection antibody. Range: 0.156-10 ng/mL



Serum of six mice was measured. The mouse CD141/Thrombomodulin concentration of detected samples was determined to be 28.01 ng/mL with a range of 21.90 - 32.07 ng/mL



Mouse lung, cut into 1-2 mm pieces, was cultured for 4 days in 25-30 mL of RPMI supplemented with 10% fetal bovine serum. The cell culture supernate was removed, assayed for CD141/Thrombomodulin, and measured 34.22 ng/mL



Cytometric bead array standard curve of MP01300-2, MOUSE CD141/Thrombomodulin Recombinant Matched Antibody Pair, PBS Only. Capture antibody: 84412-3-PBS. Detection antibody: 84412-1-PBS. Standard: Eg1139. Range: 0.781-100 ng/mL