

Mouse CD157 Recombinant Matched Antibody Pair, PBS Only

Catalog Number: **MP01303-4**

Capture Antibody Information

Catalog Number:
84417-4-PBS

Host:
Rabbit

Isotype:
IgG

Purification Method:
Protein A purification

Clone ID:
241822H1

Reactivity:
mouse

Immunogen Catalog Number:
Eg1528

Conjugate:
Unconjugated

Full name:
bone marrow stromal cell antigen 1

Gene ID:
12182

Detection Antibody Information

Catalog Number:
84417-1-PBS

Host:
Rabbit

Isotype:
IgG

Purification Method:
Protein A purification

Clone ID:
241822A5

Reactivity:
mouse

GenBank:
Immunogen Catalog Number:
Eg1528

Conjugate:
Unconjugated

Full name:
bone marrow stromal cell antigen 1

Gene ID:
12182

Applications

Tested Applications:
Sandwich ELISA

Range:
48.8-1563 pg/mL (Sandwich ELISA)

Recommended Dilutions:
It is recommended that this reagent should be titrated in each testing system to obtain optimal results.

Product Information

MP01303-4 targets CD157 in immunoassays as a matched antibody pair. Validated in Sandwich ELISA.

Capture antibody: Mouse CD157 Recombinant antibody, PBS Only (Capture/Detector) 84417-4-PBS (241822H1). 100 µg. Concentration 1 mg/mL.

Detection antibody: Mouse CD157 Recombinant antibody, PBS Only (Capture/Detector) 84417-1-PBS (241822A5). 100 µg. Concentration 1 mg/mL.

Unconjugated rabbit recombinant monoclonal antibody pair in PBS only storage buffer at a concentration of 1 mg/mL, ready for conjugation. Created using Proteintech's proprietary in-house recombinant technology. Recombinant production enables unrivalled batch-to-batch consistency, easy scale-up, and future security of supply.

Matched antibody pairs are designed for use in a variety of assays and platforms that require matched antibody pairs.

Antibody use should be optimized for each application and assay.

Storage

Storage:
Store at -80°C.
Storage buffer:
PBS only

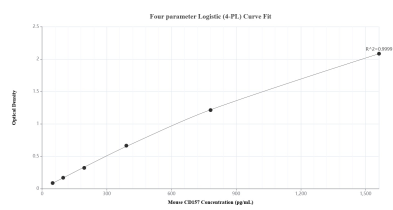
For technical support and original validation data for this product please contact:

T: 1 (888) 4PTGLAB (1-888-478-4522) (toll free in USA), or 1(312) 455-8498 (outside USA)

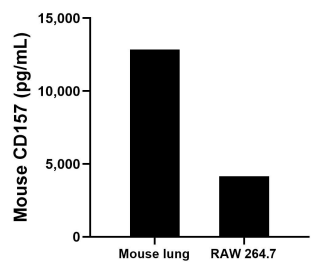
E: proteintech@ptglab.com
W: ptglab.com

This product is exclusively available under Proteintech Group brand and is not available to purchase from any other manufacturer.

Selected Validation Data



Sandwich ELISA standard curve of MP01303-4, Mouse CD157 Recombinant Matched Antibody Pair - PBS only. 84417-4-PBS was coated to a plate as the capture antibody and incubated with serial dilutions of standard Eg1528. 84417-1-PBS was HRP conjugated as the detection antibody. Range: 48.8-1563 pg/mL.



The mean CD157 concentration was determined to be 12,854.1 pg/mL in mouse lung tissue extract based on a 1.6 mg/mL extract load and 4,152.4 pg/mL in RAW 264.7 cell extract based on a 4.8 mg/mL extract load.