

Mouse SIRP alpha/CD172a Recombinant Matched Antibody Pair, PBS Only

Catalog Number: **MP01311-4**

Capture Antibody Information

Catalog Number:
84430-3-PBS
Host:
Rabbit
Isotype:
IgG
Purification Method:
Protein A purification

Clone ID:
241794E2
Reactivity:
mouse
Immunogen Catalog Number:
Eg1520

Conjugate:
Unconjugated
Full name:
signal-regulatory protein alpha
Gene ID:
19261

Detection Antibody Information

Catalog Number:
84430-2-PBS
Host:
Rabbit
Isotype:
IgG
Purification Method:
Protein A purification

Clone ID:
241794D9
Reactivity:
mouse
GenBank:
NM_007547.4
Immunogen Catalog Number:
Eg1520

Conjugate:
Unconjugated
Full name:
signal-regulatory protein alpha
Gene ID:
19261

Applications

Tested Applications:
Sandwich ELISA

Range:
19.5-625 pg/mL (Sandwich ELISA)

Recommended Dilutions:
It is recommended that this reagent should be titrated in each testing system to obtain optimal results.

Product Information

MP01311-4 targets SIRP alpha/CD172a in immunoassays as a matched antibody pair. Validated in Sandwich ELISA.

Capture antibody: Mouse SIRP alpha/CD172a Recombinant antibody, PBS Only (Capture/Detector) 84430-3-PBS (241794E2). 100 µg. Concentration 1 mg/mL.

Detection antibody: Mouse SIRP Alpha/CD172a Recombinant antibody, PBS Only (Capture/Detector) 84430-2-PBS (241794D9). 100 µg. Concentration 1 mg/mL.

Unconjugated rabbit recombinant monoclonal antibody pair in PBS only storage buffer at a concentration of 1 mg/mL, ready for conjugation. Created using Proteintech's proprietary in-house recombinant technology. Recombinant production enables unrivalled batch-to-batch consistency, easy scale-up, and future security of supply.

Matched antibody pairs are designed for use in a variety of assays and platforms that require matched antibody pairs.

Antibody use should be optimized for each application and assay.

Storage

Storage:
Store at -80°C.
Storage buffer:
PBS only

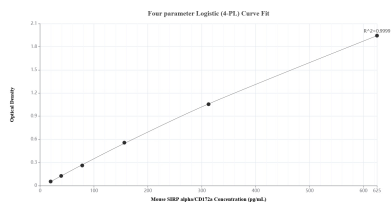
For technical support and original validation data for this product please contact:

T: 1 (888) 4PTGLAB (1-888-478-4522) (toll free in USA), or 1(312) 455-8498 (outside USA)

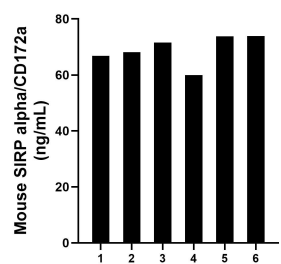
E: proteintech@ptglab.com
W: ptglab.com

This product is exclusively available under Proteintech Group brand and is not available to purchase from any other manufacturer.

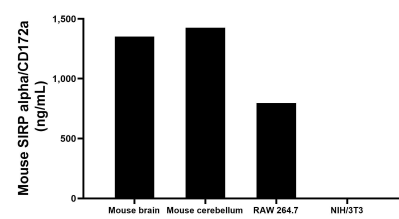
Selected Validation Data



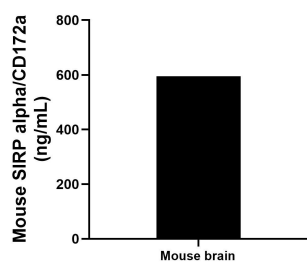
Sandwich ELISA standard curve of MP01311-4, Mouse SIRP alpha/CD172a Recombinant Matched Antibody Pair - PBS only. 84430-3-PBS was coated to a plate as the capture antibody and incubated with serial dilutions of standard Eg1520. 84430-2-PBS was HRP conjugated as the detection antibody. Range: 19.5-625 pg/mL



Serum of six mice was measured. The SIRP alpha/CD172a concentration of detected samples was determined to be 69.0 ng/mL with a range of 59.9-73.9 ng/mL



The mean SIRP alpha/CD172a concentration was determined to be 1,352.0 ng/mL in mouse brain tissue extract based on a 2.0 mg/mL extract load, 1,425.8 ng/mL in mouse cerebellum tissue extract based on a 2.9 mg/mL extract load, 796.6 ng/mL in RAW 264.7 cell extract based on a 4.2 mg/mL extract load and 4.0 ng/mL in NIH/3T3 cell extract based on a 4.4 mg/mL extract load.



The mean SIRP alpha/CD172a concentration was determined to be 595.2 ng/mL in mouse brain tissue homogenate based on a 2.2 mg/mL extract load.