

For Research Use Only

Mouse EPCR/CD201 Recombinant Matched Antibody Pair, PBS Only



Catalog Number: **MP01323-3**

Capture Antibody Information

Catalog Number:

84494-2-PBS

Host:

Rabbit

Isotype:

IgG

Purification Method:

Protein A purification

Clone ID:

241853A9

Reactivity:

mouse

Immunogen Catalog Number:

Eg1517

Conjugate:

Unconjugated

Full name:

protein C receptor, endothelial

Gene ID:

19124

Detection Antibody Information

Catalog Number:

84494-3-PBS

Host:

Rabbit

Isotype:

IgG

Purification Method:

Protein A purification

Clone ID:

241853C5

Reactivity:

mouse

GenBank:

NM_011171.2

Immunogen Catalog Number:

Eg1517

Conjugate:

Unconjugated

Full name:

protein C receptor, endothelial

Gene ID:

19124

Applications

Tested Applications:

Cytometric bead array, Sandwich ELISA

Range:

0.469-60 ng/mL (Cytometric Bead Array)
39.1-2500 pg/mL (Sandwich ELISA)

Recommended Dilutions:

It is recommended that this reagent should be titrated in each testing system to obtain optimal results.

Product Information

MP01323-3 targets EPCR/CD201 in immunoassays as a matched antibody pair. Validated in Cytometric bead array, Sandwich ELISA.

Capture antibody: Mouse EPCR/CD201 Recombinant antibody, PBS Only (Capture) 84494-2-PBS (241853A9). 100 µg. Concentration 1 mg/mL.

Detection antibody: Mouse EPCR/CD201 Recombinant antibody, PBS Only (Detector) 84494-3-PBS (241853C5). 100 µg. Concentration 1 mg/mL.

Unconjugated rabbit recombinant monoclonal antibody pair in PBS only storage buffer at a concentration of 1 mg/mL, ready for conjugation. Created using Proteintech's proprietary in-house recombinant technology. Recombinant production enables unrivalled batch-to-batch consistency, easy scale-up, and future security of supply.

Matched antibody pairs are designed for use in a variety of assays and platforms that require matched antibody pairs.

Antibody use should be optimized for each application and assay.

Storage

Storage:

Store at -80°C.

Storage buffer:

PBS only

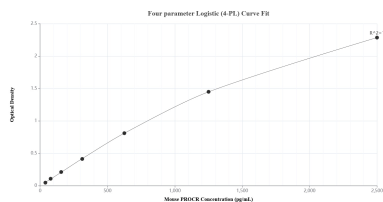
For technical support and original validation data for this product please contact:

T: 1 (888) 4PTGLAB (1-888-478-4522) (toll free in USA), or 1(312) 455-8498 (outside USA)

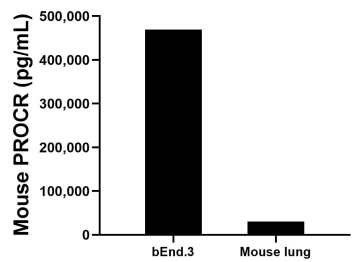
E: proteintech@ptglab.com
W: ptglab.com

This product is exclusively available under Proteintech Group brand and is not available to purchase from any other manufacturer.

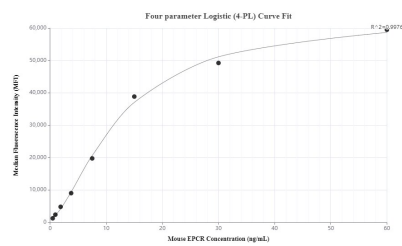
Selected Validation Data



Sandwich ELISA standard curve of MP01323-3, Mouse PROCR Recombinant Matched Antibody Pair - PBS only. 84494-2-PBS was coated to a plate as the capture antibody and incubated with serial dilutions of standard Eg1517. 84494-3-PBS was HRP conjugated as the detection antibody. Range: 39.1-2500 pg/mL.



The mean PROCR concentration was determined to be 469,591.3 pg/mL in bEnd.3 cell extract based on a 1.8 mg/mL extract load and 30,645.7 pg/mL in mouse lung tissue extract based on a 1.6 mg/mL extract load.



Cytometric bead array standard curve of MP01323-3, MOUSE EPCR Recombinant Matched Antibody Pair, PBS Only. Capture antibody: 84494-2-PBS. Detection antibody: 84494-3-PBS. Standard: Eg1517. Range: 0.469-60 ng/mL.