

# RBP4 Recombinant Matched Antibody Pair, PBS Only

Catalog Number: **MP01338-1**

## Capture Antibody Information

**Catalog Number:**  
84496-1-PBS  
**Host:**  
Rabbit  
**Isotype:**  
IgG  
**Purification Method:**  
Protein A purification

**Clone ID:**  
241944B3  
**Reactivity:**  
human

**Conjugate:**  
Unconjugated  
**Full name:**  
retinol binding protein 4, plasma  
**Gene ID:**  
5950

## Detection Antibody Information

**Catalog Number:**  
84496-2-PBS  
**Host:**  
Rabbit  
**Isotype:**  
IgG  
**Purification Method:**  
Protein A purification

**Clone ID:**  
241944F6  
**Reactivity:**  
human  
**GenBank:**  
BC020633

**Conjugate:**  
Unconjugated  
**Full name:**  
retinol binding protein 4, plasma  
**Gene ID:**  
5950

## Applications

**Tested Applications:**  
Cytometric bead array, Sandwich ELISA

**Range:**  
0.156-20 ng/mL (Cytometric Bead Array)  
0.391-25 ng/mL (Sandwich ELISA)

**Recommended Dilutions:**  
It is recommended that this reagent should be titrated in each testing system to obtain optimal results.

## Product Information

MP01338-1 targets RBP4 in immunoassays as a matched antibody pair. Validated in Cytometric bead array, Sandwich ELISA.

Capture antibody: RBP4 Recombinant antibody, PBS Only (Capture) 84496-1-PBS (241944B3). 100 µg. Concentration 1 mg/mL.

Detection antibody: RBP4 Recombinant antibody, PBS Only (Detector) 84496-2-PBS (241944F6). 100 µg. Concentration 1 mg/mL.

Unconjugated rabbit recombinant monoclonal antibody pair in PBS only storage buffer at a concentration of 1 mg/mL, ready for conjugation. Created using Proteintech's proprietary in-house recombinant technology. Recombinant production enables unrivalled batch-to-batch consistency, easy scale-up, and future security of supply.

Matched antibody pairs are designed for use in a variety of assays and platforms that require matched antibody pairs.

Antibody use should be optimized for each application and assay.

## Storage

**Storage:**  
Store at -80°C.  
**Storage buffer:**  
PBS only

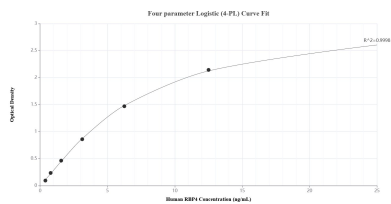
For technical support and original validation data for this product please contact:

T: 1 (888) 4PTGLAB (1-888-478-4522) (toll free in USA), or 1(312) 455-8498 (outside USA)

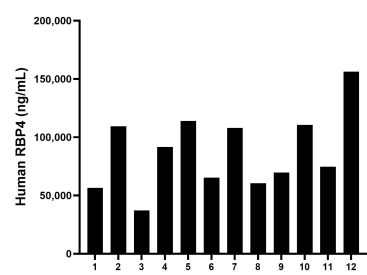
E: [proteintech@ptglab.com](mailto:proteintech@ptglab.com)  
W: [ptglab.com](http://ptglab.com)

**This product is exclusively available under Proteintech Group brand and is not available to purchase from any other manufacturer.**

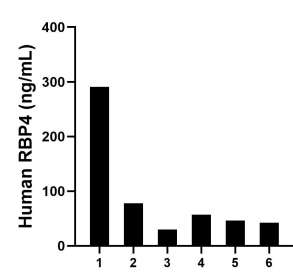
Selected Validation Data



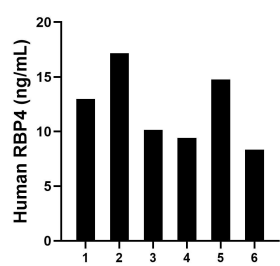
Sandwich ELISA standard curve of MP01338-1, Human RBP4 Recombinant Matched Antibody Pair - PBS only. 84496-1-PBS was coated to a plate as the capture antibody and incubated with serial dilutions of standard Eg31642. 84496-2-PBS was HRP conjugated as the detection antibody. Range: 0.391-25 ng/mL.



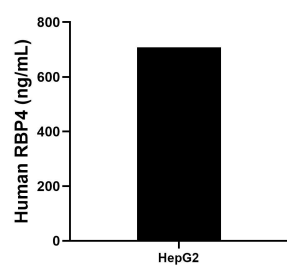
Serum of twelve individual healthy human donors was measured. The RBP4 concentration of detected samples was determined to be 87,804.85 ng/mL with a range of 37,160.99 - 156,178.64 ng/mL.



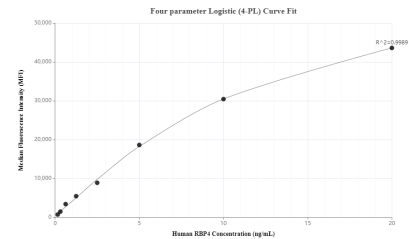
Urine of six individual healthy human donors was measured. The RBP4 concentration of detected samples was determined to be 90.68 ng/mL with a range of 29.96 - 290.83 ng/mL.



Saliva of six individual healthy human donors was measured. The RBP4 concentration of detected samples was determined to be 12.14 ng/mL with a range of 8.34-17.17 ng/mL.



HepG2 cells were cultured in DMEM supplemented with 10% fetal bovine serum, 2.5 mM L-glutamine, 100 U/mL penicillin, and 100 µg/mL streptomycin sulfate. An aliquot of the cell culture supernate was removed, assayed for human RBP4, and measured 707.54 ng/mL.



Cytometric bead array standard curve of MP01338-1, RBP4 Recombinant Matched Antibody Pair, PBS Only. Capture antibody: 84496-1-PBS. Detection antibody: 84496-2-PBS. Standard: Eg31642. Range: 0.156-20 ng/mL.