

For Research Use Only

GLAST/EAAT1 Recombinant Matched Antibody Pair, PBS Only



Catalog Number:MP01339-1

Capture Antibody Information

Catalog Number:
84497-2-PBS
Host:
Rabbit
Isotype:
IgG
Purification Method:
Protein A purification

Clone ID:
241907B1
Reactivity:
human
Immunogen Catalog Number:
Ag16962

Conjugate:
Unconjugated
Full name:
solute carrier family 1 (glial high affinity glutamate transporter), member 3
Gene ID:
6507

Detection Antibody Information

Catalog Number:
84497-1-PBS
Host:
Rabbit
Isotype:
IgG
Purification Method:
Protein A purification

Clone ID:
241907A9
Reactivity:
human
GenBank:
BC037310
Immunogen Catalog Number:
Ag16962

Conjugate:
Unconjugated
Full name:
solute carrier family 1 (glial high affinity glutamate transporter), member 3
Gene ID:
6507

Applications

Tested Applications:
Cytometric bead array

Range:
0.313-40 ng/mL (Cytometric Bead Array)

Recommended Dilutions:
It is recommended that this reagent should be titrated in each testing system to obtain optimal results.

Product Information

MP01339-1 targets GLAST/EAAT1 in immunoassays as a matched antibody pair. Validated in Cytometric bead array.

Capture antibody: GLAST/EAAT1 Recombinant antibody, PBS Only (Capture) 84497-2-PBS (241907B1). 100 µg. Concentration 1 mg/mL.

Detection antibody: GLAST/EAAT1 Recombinant antibody, PBS Only (Capture/Detector) 84497-1-PBS (241907A9). 100 µg. Concentration 1 mg/mL.

Unconjugated rabbit recombinant monoclonal antibody pair in PBS only storage buffer at a concentration of 1 mg/mL, ready for conjugation. Created using Proteintech's proprietary in-house recombinant technology. Recombinant production enables unrivalled batch-to-batch consistency, easy scale-up, and future security of supply.

Matched antibody pairs are designed for use in a variety of assays and platforms that require matched antibody pairs.

Antibody use should be optimized for each application and assay.

Storage

Storage:
Store at -80°C.
Storage buffer:
PBS only

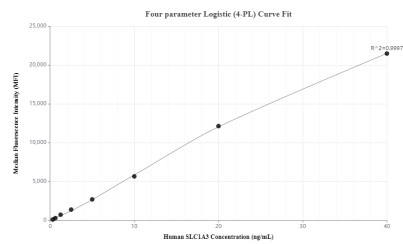
For technical support and original validation data for this product please contact:

T: 1 (888) 4PTGLAB (1-888-478-4522) (toll free in USA), or 1(312) 455-8498 (outside USA)

E: proteintech@ptglab.com
W: ptglab.com

This product is exclusively available under Proteintech Group brand and is not available to purchase from any other manufacturer.

Selected Validation Data



Cytometric bead array standard curve of MP01339-1, GLAST/EAAT1 Recombinant Matched Antibody Pair, PBS Only. Capture antibody: 84497-2-PBS. Detection antibody: 84497-1-PBS. Standard: Ag16962. Range: 0.313-40 ng/mL.