

For Research Use Only

Mouse Tie-2 Recombinant Matched Antibody Pair, PBS Only



Catalog Number:MP01351-2

Capture Antibody Information

Catalog Number:
84469-4-PBS
Host:
Rabbit
Isotype:
IgG
Purification Method:
Protein A purification

Clone ID:
241753H3
Reactivity:
mouse

Conjugate:
Unconjugated
Full name:
endothelial-specific receptor tyrosine kinase
Gene ID:
21687

Detection Antibody Information

Catalog Number:
84469-1-PBS
Host:
Rabbit
Isotype:
IgG
Purification Method:
Protein A purification

Clone ID:
241753C1
Reactivity:
mouse
GenBank:
NM_001290549.1

Conjugate:
Unconjugated
Full name:
endothelial-specific receptor tyrosine kinase
Gene ID:
21687

Applications

Tested Applications:
Cytometric bead array, Sandwich ELISA

Range:
0.625-80 ng/mL (Cytometric Bead Array)
125-4000 pg/mL (Sandwich ELISA)

Recommended Dilutions:
It is recommended that this reagent should be titrated in each testing system to obtain optimal results.

Product Information

MP01351-2 targets Tie-2 in immunoassays as a matched antibody pair. Validated in Cytometric bead array, Sandwich ELISA.

Capture antibody: Mouse Tie-2 Recombinant antibody, PBS Only (Capture) 84469-4-PBS (241753H3). 100 µg. Concentration 1 mg/mL.

Detection antibody: Mouse Tie-2 Recombinant antibody, PBS Only (Detector) 84469-1-PBS (241753C1). 100 µg. Concentration 1 mg/mL.

Unconjugated rabbit recombinant monoclonal antibody pair in PBS only storage buffer at a concentration of 1 mg/mL, ready for conjugation. Created using Proteintech's proprietary in-house recombinant technology. Recombinant production enables unrivalled batch-to-batch consistency, easy scale-up, and future security of supply.

Matched antibody pairs are designed for use in a variety of assays and platforms that require matched antibody pairs.

Antibody use should be optimized for each application and assay.

Storage

Storage:
Store at -80°C.
Storage buffer:
PBS only

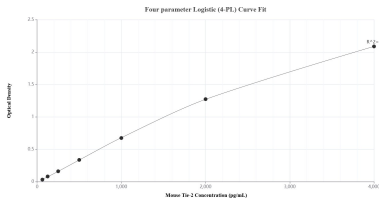
For technical support and original validation data for this product please contact:

T: 1 (888) 4PTGLAB (1-888-478-4522) (toll free in USA), or 1(312) 455-8498 (outside USA)

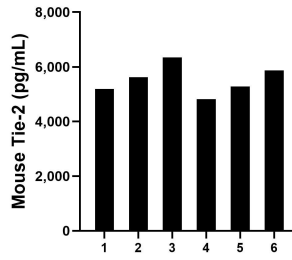
E: proteintech@ptglab.com
W: ptglab.com

This product is exclusively available under Proteintech Group brand and is not available to purchase from any other manufacturer.

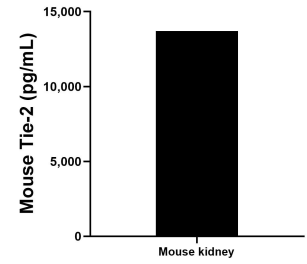
Selected Validation Data



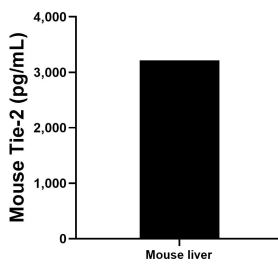
Sandwich ELISA standard curve of MP01351-2, Mouse Tie-2 Recombinant Matched Antibody Pair - PBS only. 84469-4-PBS was coated to a plate as the capture antibody and incubated with serial dilutions of standard Eg1514. 84469-1-PBS was HRP conjugated as the detection antibody. Range: 125-4000 pg/mL



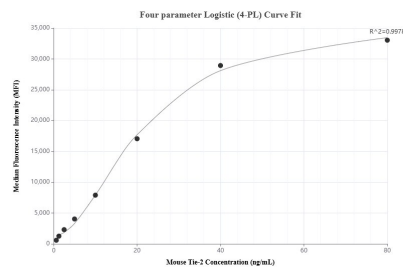
Serum of six mice was measured. The Tie-2 concentration of detected samples was determined to be 5520.9 pg/mL with a range of 4813.2-6347.4 pg/mL



One mouse kidney was cultured in RPMI 1640 supplemented with 10% fetal bovine serum, 50 μ M β -mercaptoethanol, 2 mM L-glutamine, and 100 μ g/mL of streptomycin sulfate. An aliquot of the cell culture supernatant was removed, assayed for mouse Tie-2 and measured 13,696.0 pg/mL



The mean Tie-2 concentration was determined to be 3214.5 pg/mL in mouse liver tissue homogenate based on a 3.3 mg/mL extract load.



Cytometric bead array standard curve of MP01351-2, MOUSE Tie-2 Recombinant Matched Antibody Pair, PBS Only. Capture antibody: 84469-4-PBS. Detection antibody: 84469-1-PBS. Standard: Eg1514. Range: 0.625-80 ng/mL