

Mouse CD107b / LAMP2

Recombinant Matched Antibody Pair, PBS Only

Catalog Number: **MP01356-4**

Capture Antibody Information

Catalog Number:
84474-2-PBS
Host:
Rabbit
Isotype:
IgG
Purification Method:
Protein A purification

Clone ID:
241893E12
Reactivity:
mouse
Immunogen Catalog Number:
Eg2029

Conjugate:
Unconjugated
Full name:
lysosomal-associated membrane
protein 2
Gene ID:
16784

Detection Antibody Information

Catalog Number:
84474-4-PBS
Host:
Rabbit
Isotype:
IgG
Purification Method:
Protein A purification

Clone ID:
241893A1
Reactivity:
mouse
GenBank:
NM_001017959.2
Immunogen Catalog Number:
Eg2029

Conjugate:
Unconjugated
Full name:
lysosomal-associated membrane
protein 2
Gene ID:
16784

Applications

Tested Applications:
Sandwich ELISA

Range:
39.1-2500 pg/mL (Sandwich ELISA)

Recommended Dilutions:
It is recommended that this reagent
should be titrated in each testing
system to obtain optimal results.

Product Information

MP01356-4 targets CD107b / LAMP2 in immunoassays as a matched antibody pair. Validated in Sandwich ELISA.

Capture antibody: Mouse CD107b / LAMP2 Recombinant antibody, PBS Only (Capture/Detector) 84474-2-PBS (241893E12). 100 µg. Concentration 1 mg/mL.

Detection antibody: Mouse CD107b / LAMP2 Recombinant antibody, PBS Only (Detector) 84474-4-PBS (241893A1). 100 µg. Concentration 1 mg/mL.

Unconjugated rabbit recombinant monoclonal antibody pair in PBS only storage buffer at a concentration of 1 mg/mL, ready for conjugation. Created using Proteintech's proprietary in-house recombinant technology. Recombinant production enables unrivalled batch-to-batch consistency, easy scale-up, and future security of supply.

Matched antibody pairs are designed for use in a variety of assays and platforms that require matched antibody pairs.

Antibody use should be optimized for each application and assay.

Storage

Storage:
Store at -80°C.
Storage buffer:
PBS only

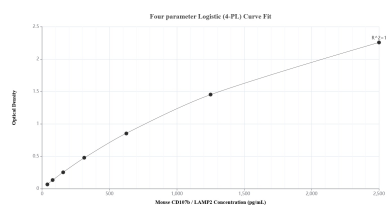
For technical support and original validation data for this product please contact:

T: 1 (888) 4PTGLAB (1-888-478-4522) (toll free
in USA), or 1(312) 455-8498 (outside USA)

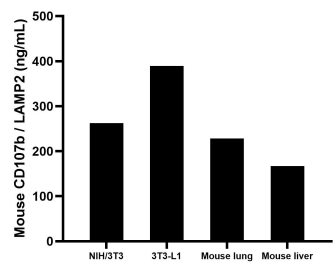
E: proteintech@ptglab.com
W: ptglab.com

This product is exclusively available under Proteintech
Group brand and is not available to purchase from any
other manufacturer.

Selected Validation Data



Sandwich ELISA standard curve of MP01356-4, Mouse CD107b / LAMP2 Recombinant Matched Antibody Pair - PBS only. 84474-2-PBS was coated to a plate as the capture antibody and incubated with serial dilutions of standard Eg2029. 84474-4-PBS was HRP conjugated as the detection antibody. Range: 39.1-2500 pg/mL



The mean CD107b / LAMP2 concentration was determined to be 262.0 ng/mL in NIH/3T3 cell extract based on a 3.3 mg/mL extract load, 389.6 ng/mL in 3T3-L1 cell extract based on a 1.3 mg/mL extract load, 228.1 ng/mL in mouse lung tissue extract based on a 1.3 mg/mL extract load and 166.9 ng/mL in mouse liver tissue extract based on a 1.3 mg/mL extract load.