

HSL Recombinant Matched Antibody Pair, PBS Only

Catalog Number: **MP01374-1**

Capture Antibody Information

Catalog Number:
84540-3-PBS

Host:
Rabbit

Isotype:
IgG

Purification Method:
Protein A purification

Clone ID:
241875F1

Reactivity:
human

Immunogen Catalog Number:
Ag11360

Conjugate:
Unconjugated

Full name:
lipase, hormone-sensitive

Gene ID:
3991

Detection Antibody Information

Catalog Number:
84540-1-PBS

Host:
Rabbit

Isotype:
IgG

Purification Method:
Protein A purification

Clone ID:
241875B11

Reactivity:
human, mouse, rat

GenBank:
BC070041

Immunogen Catalog Number:
Ag11360

Conjugate:
Unconjugated

Full name:
lipase, hormone-sensitive

Gene ID:
3991

Applications

Tested Applications:
Cytometric bead array, Sandwich ELISA

Range:
0.625-80 ng/mL (Cytometric Bead Array)
0.313-20 ng/mL (Sandwich ELISA)

Recommended Dilutions:
It is recommended that this reagent should be titrated in each testing system to obtain optimal results.

Product Information

MP01374-1 targets HSL in immunoassays as a matched antibody pair. Validated in Cytometric bead array, Sandwich ELISA.

Capture antibody: HSL Recombinant antibody, PBS Only (Capture) 84540-3-PBS (241875F1). 100 µg. Concentration 1 mg/mL.

Detection antibody: HSL Recombinant antibody, PBS Only (Detector) 84540-1-PBS (241875B11). 100 µg. Concentration 1 mg/mL.

Unconjugated rabbit recombinant monoclonal antibody pair in PBS only storage buffer at a concentration of 1 mg/mL, ready for conjugation. Created using Proteintech's proprietary in-house recombinant technology. Recombinant production enables unrivalled batch-to-batch consistency, easy scale-up, and future security of supply.

Matched antibody pairs are designed for use in a variety of assays and platforms that require matched antibody pairs.

Antibody use should be optimized for each application and assay.

Storage

Storage:
Store at -80°C.

Storage buffer:
PBS only

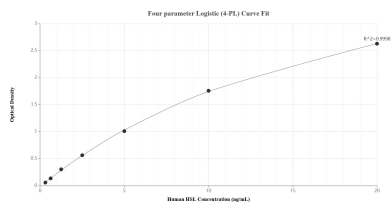
For technical support and original validation data for this product please contact:

T: 1 (888) 4PTGLAB (1-888-478-4522) (toll free in USA), or 1(312) 455-8498 (outside USA)

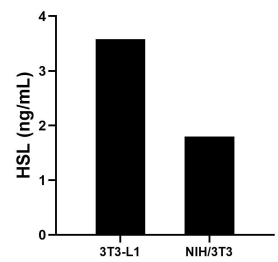
E: proteintech@ptglab.com
W: ptglab.com

This product is exclusively available under Proteintech Group brand and is not available to purchase from any other manufacturer.

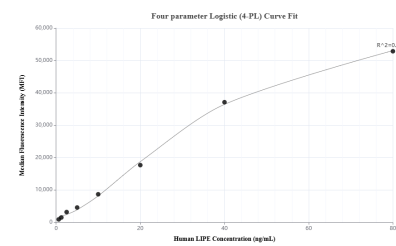
Selected Validation Data



Sandwich ELISA standard curve of MP01374-1, Human HSL Recombinant Matched Antibody Pair - PBS only. 84540-3-PBS was coated to a plate as the capture antibody and incubated with serial dilutions of standard Ag11360. 84540-1-PBS was HRP conjugated as the detection antibody. Range: 0.313-20 ng/mL.



The mean HSL concentration was determined to be 3.58 ng/mL in 3T3-L1 cell extract based on a 1.30 mg/mL extract load and 1.80 ng/mL in NIH/3T3 cell extract based on a 5.90 mg/mL extract load.



Cytometric bead array standard curve of MP01374-1, HSL Recombinant Matched Antibody Pair, PBS Only. Capture antibody: 84540-3-PBS. Detection antibody: 84540-1-PBS. Standard: Ag11360. Range: 0.625-80 ng/mL.