

For Research Use Only

Mouse ALCAM Recombinant Matched Antibody Pair, PBS Only



Catalog Number:MP01379-1

Capture Antibody Information

Catalog Number:
84528-1-PBS
Host:
Rabbit
Isotype:
IgG
Purification Method:
Protein A purification

Clone ID:
241945A4
Reactivity:
mouse
Immunogen Catalog Number:
Eg1524

Conjugate:
Unconjugated
Full name:
activated leukocyte cell adhesion molecule
Gene ID:
11658

Detection Antibody Information

Catalog Number:
84528-3-PBS
Host:
Rabbit
Isotype:
IgG
Purification Method:
Protein A purification

Clone ID:
241945C11
Reactivity:
mouse
GenBank:
NM_009655.3
Immunogen Catalog Number:
Eg1524

Conjugate:
Unconjugated
Full name:
activated leukocyte cell adhesion molecule
Gene ID:
11658

Applications

Tested Applications:
Cytometric bead array, Sandwich ELISA

Range:
0.781-100 ng/mL (Cytometric Bead Array)
39.1-2500 pg/mL (Sandwich ELISA)

Recommended Dilutions:
It is recommended that this reagent should be titrated in each testing system to obtain optimal results.

Product Information

MP01379-1 targets ALCAM in immunoassays as a matched antibody pair. Validated in Cytometric bead array, Sandwich ELISA.

Capture antibody: Mouse ALCAM Recombinant antibody, PBS Only (Capture) 84528-1-PBS (241945A4). 100 µg. Concentration 1 mg/mL.

Detection antibody: Mouse ALCAM Recombinant antibody, PBS Only (Detector) 84528-3-PBS (241945C11). 100 µg. Concentration 1 mg/mL.

Unconjugated rabbit recombinant monoclonal antibody pair in PBS only storage buffer at a concentration of 1 mg/mL, ready for conjugation. Created using Proteintech's proprietary in-house recombinant technology. Recombinant production enables unrivalled batch-to-batch consistency, easy scale-up, and future security of supply.

Matched antibody pairs are designed for use in a variety of assays and platforms that require matched antibody pairs.

Antibody use should be optimized for each application and assay.

Storage

Storage:
Store at -80°C.
Storage buffer:
PBS only

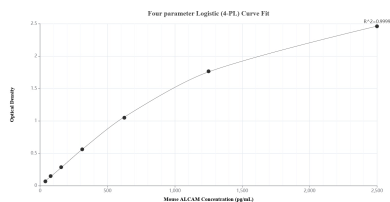
For technical support and original validation data for this product please contact:

T: 1 (888) 4PTGLAB (1-888-478-4522) (toll free in USA), or 1(312) 455-8498 (outside USA)

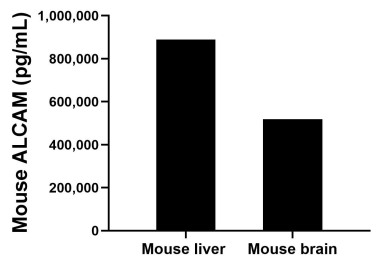
E: proteintech@ptglab.com
W: ptglab.com

This product is exclusively available under Proteintech Group brand and is not available to purchase from any other manufacturer.

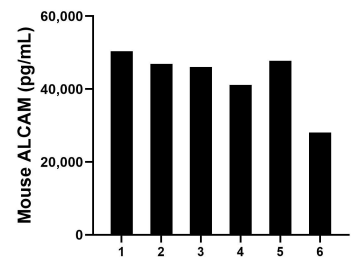
Selected Validation Data



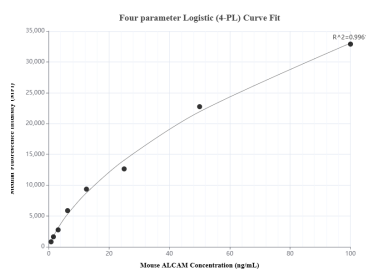
Sandwich ELISA standard curve of MP01379-1, Mouse ALCAM Recombinant Matched Antibody Pair - PBS only. 84528-1-PBS was coated to a plate as the capture antibody and incubated with serial dilutions of standard Eg1524. 84528-3-PBS was HRP conjugated as the detection antibody. Range: 39.1-2500 pg/mL.



The mean ALCAM concentration was determined to be 888,916.9 pg/mL in mouse liver tissue extract based on a 3.7 mg/mL extract load and 518,424.5 pg/mL in mouse brain tissue extract based on a 2.0 mg/mL extract load.



Serum of six mice was measured. The ALCAM concentration of detected samples was determined to be 43,380.5 pg/mL with a range of 28,091.3-50,380.4 pg/mL.



Cytometric bead array standard curve of MP01379-1, MOUSE ALCAM Recombinant Matched Antibody Pair, PBS Only. Capture antibody: 84528-1-PBS. Detection antibody: 84528-3-PBS. Standard: Eg1524. Range: 0.781-100 ng/mL.