

# LYVE-1 Recombinant Matched Antibody Pair, PBS Only

Catalog Number: **MP01383-1**

## Capture Antibody Information

**Catalog Number:**  
84526-3-PBS  
**Host:**  
Rabbit  
**Isotype:**  
IgG  
**Purification Method:**  
Protein A purification

**Clone ID:**  
241795F7  
**Reactivity:**  
human

**Conjugate:**  
Unconjugated  
**Full name:**  
lymphatic vessel endothelial  
hyaluronan receptor 1  
**Gene ID:**  
10894

## Detection Antibody Information

**Catalog Number:**  
84526-2-PBS  
**Host:**  
Rabbit  
**Isotype:**  
IgG  
**Purification Method:**  
Protein A purification

**Clone ID:**  
241795D1  
**Reactivity:**  
human  
**GenBank:**  
NM\_006691.4

**Conjugate:**  
Unconjugated  
**Full name:**  
lymphatic vessel endothelial  
hyaluronan receptor 1  
**Gene ID:**  
10894

## Applications

**Tested Applications:**  
Cytometric bead array, Sandwich  
ELISA

**Range:**  
0.469-60 ng/mL (Cytometric Bead  
Array)  
39.1-2500 pg/mL (Sandwich ELISA)

**Recommended Dilutions:**  
It is recommended that this reagent  
should be titrated in each testing  
system to obtain optimal results.

## Product Information

MP01383-1 targets LYVE-1 in immunoassays as a matched antibody pair. Validated in Cytometric bead array, Sandwich ELISA.

Capture antibody: LYVE-1 Recombinant antibody, PBS Only (Capture) 84526-3-PBS (241795F7). 100 µg. Concentration 1 mg/mL.

Detection antibody: LYVE-1 Recombinant antibody, PBS Only (Detector) 84526-2-PBS (241795D1). 100 µg. Concentration 1 mg/mL.

Unconjugated rabbit recombinant monoclonal antibody pair in PBS only storage buffer at a concentration of 1 mg/mL, ready for conjugation. Created using Proteintech's proprietary in-house recombinant technology. Recombinant production enables unrivalled batch-to-batch consistency, easy scale-up, and future security of supply.

Matched antibody pairs are designed for use in a variety of assays and platforms that require matched antibody pairs.

Antibody use should be optimized for each application and assay.

## Storage

**Storage:**  
Store at -80°C.  
**Storage buffer:**  
PBS only

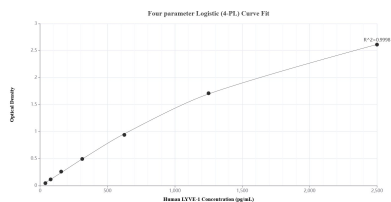
For technical support and original validation data for this product please contact:

T: 1 (888) 4PTGLAB (1-888-478-4522) (toll free  
in USA), or 1(312) 455-8498 (outside USA)

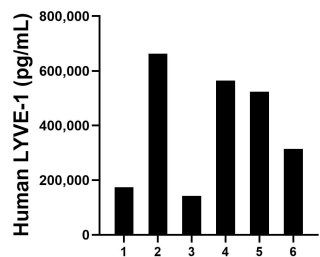
E: [proteintech@ptglab.com](mailto:proteintech@ptglab.com)  
W: [ptglab.com](http://ptglab.com)

**This product is exclusively available under Proteintech Group brand and is not available to purchase from any other manufacturer.**

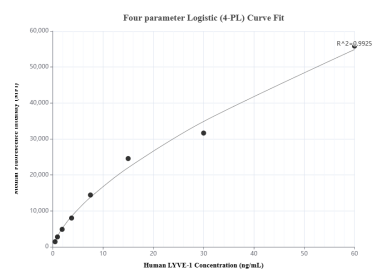
## Selected Validation Data



Sandwich ELISA standard curve of MP01383-1, Human LYVE-1 Recombinant Matched Antibody Pair - PBS only. 84526-3-PBS was coated to a plate as the capture antibody and incubated with serial dilutions of standard Eg1615. 84526-2-PBS was HRP conjugated as the detection antibody. Range: 39.1-2500 pg/mL



Serum of six individual healthy human donors was measured. The LYVE-1 concentration of detected samples was determined to be 396,843.6 pg/mL with a range of 142,673.4-662,904.1 pg/mL



Cytometric bead array standard curve of MP01383-1, LYVE-1 Recombinant Matched Antibody Pair, PBS Only. Capture antibody: 84526-3-PBS. Detection antibody: 84526-2-PBS. Standard: Eg1615. Range: 0.469-60 ng/mL