

For Research Use Only



IL-1RA Recombinant Matched Antibody Pair, PBS Only

Catalog Number:MP01389-3

Capture Antibody Information

Catalog Number:
84532-5-PBS

Host:
Rabbit

Isotype:
IgG

Purification Method:
Protein A purification

Clone ID:
241879G2

Reactivity:
human

Immunogen Catalog Number:
Ag1277

Conjugate:
Unconjugated

Full name:
interleukin 1 receptor antagonist

Gene ID:
3557

Detection Antibody Information

Catalog Number:
84532-3-PBS

Host:
Rabbit

Isotype:
IgG

Purification Method:
Protein A purification

Clone ID:
241879G8

Reactivity:
human

GenBank:
BC009745

Immunogen Catalog Number:
Ag1277

Conjugate:
Unconjugated

Full name:
interleukin 1 receptor antagonist

Gene ID:
3557

Applications

Tested Applications:
Sandwich ELISA

Range:
78.1-5000 pg/mL (Sandwich ELISA)

Recommended Dilutions:
It is recommended that this reagent should be titrated in each testing system to obtain optimal results.

Product Information

MP01389-3 targets IL-1RA in immunoassays as a matched antibody pair. Validated in Sandwich ELISA.

Capture antibody: IL-1RA Recombinant antibody, PBS Only (Capture) 84532-5-PBS (241879G2). 100 µg. Concentration 1 mg/mL.

Detection antibody: IL-1RA Recombinant antibody, PBS Only (Capture/Detector) 84532-3-PBS (241879G8). 100 µg. Concentration 1 mg/mL.

Unconjugated rabbit recombinant monoclonal antibody pair in PBS only storage buffer at a concentration of 1 mg/mL, ready for conjugation. Created using Proteintech's proprietary in-house recombinant technology. Recombinant production enables unrivalled batch-to-batch consistency, easy scale-up, and future security of supply.

Matched antibody pairs are designed for use in a variety of assays and platforms that require matched antibody pairs.

Antibody use should be optimized for each application and assay.

Storage

Storage:
Store at -80°C.
Storage buffer:
PBS only

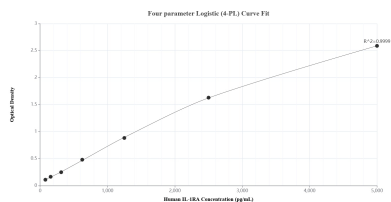
For technical support and original validation data for this product please contact:

T: 1 (888) 4PTGLAB (1-888-478-4522) (toll free in USA), or 1(312) 455-8498 (outside USA)

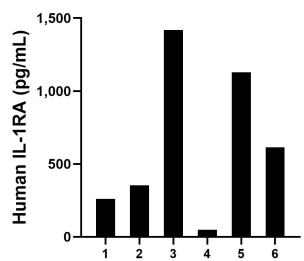
E: proteintech@ptglab.com
W: ptglab.com

This product is exclusively available under Proteintech Group brand and is not available to purchase from any other manufacturer.

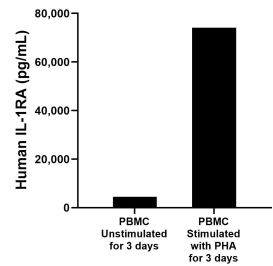
Selected Validation Data



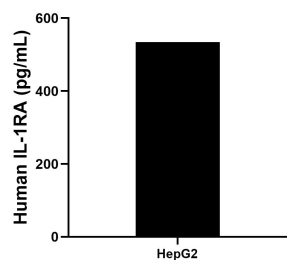
Sandwich ELISA standard curve of MP01389-3, Human IL-1RA Recombinant Matched Antibody Pair - PBS only. 84532-5-PBS was coated to a plate as the capture antibody and incubated with serial dilutions of standard Ag1277. 84532-3-PBS was HRP conjugated as the detection antibody. Range: 78.1-5000 pg/mL.



Serum of six individual healthy human donors was measured. The IL-1RA concentration of detected samples was determined to be 637.3 pg/mL with a range of 49.7-1,417.8 pg/mL.



Human peripheral blood mononuclear cells (PBMC) were cultured unstimulated or stimulated with 10 µg/mL PHA for 3 days. The mean IL-1RA concentration was determined to be 4,505.9 pg/mL in unstimulated PBMC supernatant, 74,132.2 pg/mL in PHA stimulated PBMC supernatant.



HepG2 cells were cultured in DMEM supplemented with 10% fetal bovine serum, 2.5 mM L-glutamine, 100 U/mL penicillin, and 100 µg/mL streptomycin sulfate. An aliquot of the cell culture supernate was removed, assayed for human IL-1RA, and measured 534.4 pg/mL.