

MCM2 Recombinant Matched Antibody Pair, PBS Only

Catalog Number: **MP01392-2**

Capture Antibody Information

Catalog Number:
84511-2-PBS
Host:
Rabbit
Isotype:
IgG
Purification Method:
Protein A purification

Clone ID:
241968D3
Reactivity:
human
Immunogen Catalog Number:
Ag0798

Conjugate:
Unconjugated
Full name:
minichromosome maintenance complex component 2
Gene ID:
4171

Detection Antibody Information

Catalog Number:
84511-3-PBS
Host:
Rabbit
Isotype:
IgG
Purification Method:
Protein A purification

Clone ID:
241968C2
Reactivity:
human
GenBank:
BC007670
Immunogen Catalog Number:
Ag0798

Conjugate:
Unconjugated
Full name:
minichromosome maintenance complex component 2
Gene ID:
4171

Applications

Tested Applications:
Cytometric bead array, Sandwich ELISA

Range:
0.781-100 ng/mL (Cytometric Bead Array)
0.313-20 ng/mL (Sandwich ELISA)

Recommended Dilutions:
It is recommended that this reagent should be titrated in each testing system to obtain optimal results.

Product Information

MP01392-2 targets MCM2 in immunoassays as a matched antibody pair. Validated in Cytometric bead array, Sandwich ELISA.

Capture antibody: MCM2 Recombinant antibody, PBS Only (Capture) 84511-2-PBS (241968D3). 100 µg. Concentration 1 mg/mL.

Detection antibody: MCM2 Recombinant antibody, PBS Only (Detector) 84511-3-PBS (241968C2). 100 µg. Concentration 1 mg/mL.

Unconjugated rabbit recombinant monoclonal antibody pair in PBS only storage buffer at a concentration of 1 mg/mL, ready for conjugation. Created using Proteintech's proprietary in-house recombinant technology. Recombinant production enables unrivalled batch-to-batch consistency, easy scale-up, and future security of supply.

Matched antibody pairs are designed for use in a variety of assays and platforms that require matched antibody pairs.

Antibody use should be optimized for each application and assay.

Storage

Storage:
Store at -80°C.
Storage buffer:
PBS only

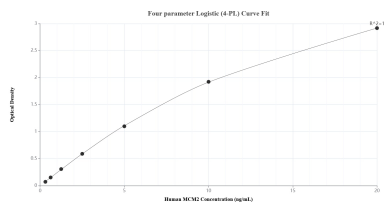
For technical support and original validation data for this product please contact:

T: 1 (888) 4PTGLAB (1-888-478-4522) (toll free in USA), or 1(312) 455-8498 (outside USA)

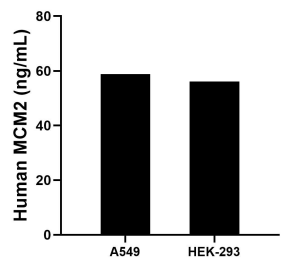
E: proteintech@ptglab.com
W: ptglab.com

This product is exclusively available under Proteintech Group brand and is not available to purchase from any other manufacturer.

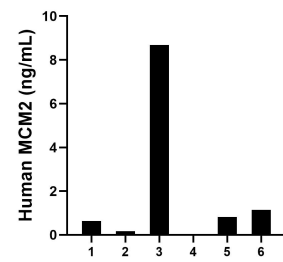
Selected Validation Data



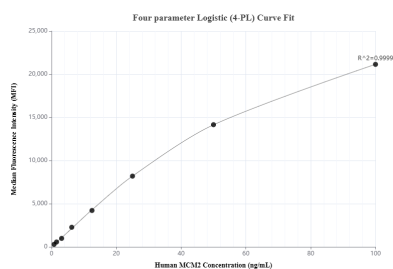
Sandwich ELISA standard curve of MP01392-2, Human MCM2 Recombinant Matched Antibody Pair - PBS only. 84511-2-PBS was coated to a plate as the capture antibody and incubated with serial dilutions of standard Ag0798. 84511-3-PBS was HRP conjugated as the detection antibody. Range: 0.313-20 ng/mL



The mean MCM2 concentration was determined to be 58.85 ng/mL in A549 cell extract based on a 2.70 mg/mL extract load and 56.17 ng/mL in HEK-293 cell extract based on a 3.30 mg/mL extract load.



Serum of six individual healthy human donors was measured. The MCM2 concentration of detected samples was determined to be 2.29 ng/mL with a range of ND-8.68 ng/mL.



Cytometric bead array standard curve of MP01392-2, MCM2 Recombinant Matched Antibody Pair, PBS Only. Capture antibody: 84511-2-PBS. Detection antibody: 84511-3-PBS. Standard: Ag0798. Range: 0.781-100 ng/mL