

# Cortactin Recombinant Matched Antibody Pair, PBS Only

Catalog Number: **MP01412-2**

## Capture Antibody Information

**Catalog Number:**

84569-2-PBS

**Host:**

Rabbit

**Isotype:**

IgG

**Purification Method:**

Protein A purification

**Clone ID:**

241987B4

**Reactivity:**

human

**Immunogen Catalog Number:**

Ag1940

**Conjugate:**

Unconjugated

**Full name:**

cortactin

**Gene ID:**

2017

## Detection Antibody Information

**Catalog Number:**

84569-1-PBS

**Host:**

Rabbit

**Isotype:**

IgG

**Purification Method:**

Protein A purification

**Clone ID:**

241987A12

**Reactivity:**

human

**GenBank:**

BC008799

**Immunogen Catalog Number:**

Ag1940

**Conjugate:**

Unconjugated

**Full name:**

cortactin

**Gene ID:**

2017

## Applications

**Tested Applications:**

Cytometric bead array, Sandwich ELISA

**Range:**

0.313-40 ng/mL (Cytometric Bead Array)  
78.1-5000 pg/mL (Sandwich ELISA)

**Recommended Dilutions:**

It is recommended that this reagent should be titrated in each testing system to obtain optimal results.

## Product Information

MP01412-2 targets Cortactin in immunoassays as a matched antibody pair. Validated in Cytometric bead array, Sandwich ELISA.

Capture antibody: Cortactin Recombinant antibody, PBS Only (Capture) 84569-2-PBS (241987B4). 100 µg. Concentration 1 mg/mL.

Detection antibody: Cortactin Recombinant antibody, PBS Only (Detector) 84569-1-PBS (241987A12). 100 µg. Concentration 1 mg/mL.

Unconjugated rabbit recombinant monoclonal antibody pair in PBS only storage buffer at a concentration of 1 mg/mL, ready for conjugation. Created using Proteintech's proprietary in-house recombinant technology. Recombinant production enables unrivalled batch-to-batch consistency, easy scale-up, and future security of supply.

Matched antibody pairs are designed for use in a variety of assays and platforms that require matched antibody pairs.

Antibody use should be optimized for each application and assay.

## Storage

**Storage:**

Store at -80°C.

**Storage buffer:**

PBS only

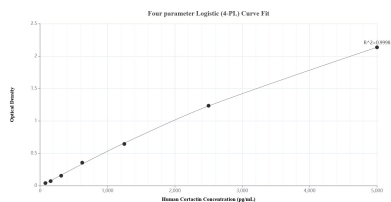
For technical support and original validation data for this product please contact:

T: 1 (888) 4PTGLAB (1-888-478-4522) (toll free in USA), or 1(312) 455-8498 (outside USA)

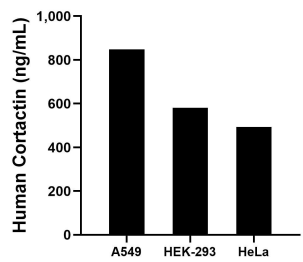
E: [proteintech@ptglab.com](mailto:proteintech@ptglab.com)  
W: [ptglab.com](http://ptglab.com)

**This product is exclusively available under Proteintech Group brand and is not available to purchase from any other manufacturer.**

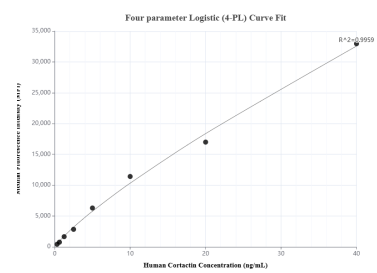
## Selected Validation Data



Sandwich ELISA standard curve of MP01412-2, Human Cortactin Recombinant Matched Antibody Pair - PBS only. 84569-2-PBS was coated to a plate as the capture antibody and incubated with serial dilutions of standard Ag1940. 84569-1-PBS was HRP conjugated as the detection antibody. Range: 78.1-5000 pg/mL.



The mean Cortactin concentration was determined to be 848.3 ng/mL in A549 cell extract based on a 2.3 mg/mL extract load, 581.1 ng/mL in HEK-293 cell extract based on a 3.3 mg/mL extract load and 493.0 ng/mL in HeLa cell extract based on a 1.0 mg/mL extract load.



Cytometric bead array standard curve of MP01412-2, Cortactin Recombinant Matched Antibody Pair, PBS Only. Capture antibody: 84569-2-PBS. Detection antibody: 84569-1-PBS. Standard: Ag1940. Range: 0.313-40 ng/mL.