

For Research Use Only

Mouse PD-L2/B7-DC Recombinant Matched Antibody Pair, PBS Only



Catalog Number:MP01413-3

Capture Antibody Information

Catalog Number:
84573-5-PBS
Host:
Rabbit
Isotype:
IgG
Purification Method:
Protein A purification

Clone ID:
241728H2
Reactivity:
mouse

Conjugate:
Unconjugated
Full name:
programmed cell death 1 ligand 2
Gene ID:
58205

Detection Antibody Information

Catalog Number:
84573-4-PBS
Host:
Rabbit
Isotype:
IgG
Purification Method:
Protein A purification

Clone ID:
241728D6
Reactivity:
mouse
GenBank:
NM_021396.2

Conjugate:
Unconjugated
Full name:
programmed cell death 1 ligand 2
Gene ID:
58205

Applications

Tested Applications:
Sandwich ELISA

Range:
15.6-500 pg/mL (Sandwich ELISA)

Recommended Dilutions:
It is recommended that this reagent should be titrated in each testing system to obtain optimal results.

Product Information

MP01413-3 targets PD-L2/B7-DC in immunoassays as a matched antibody pair. Validated in Sandwich ELISA.

Capture antibody: Mouse PD-L2/B7-DC Recombinant antibody, PBS Only (Capture) 84573-5-PBS (241728H2). 100 µg. Concentration 1 mg/mL.

Detection antibody: Mouse PD-L2/B7-DC Recombinant antibody, PBS Only (Detector) 84573-4-PBS (241728D6). 100 µg. Concentration 1 mg/mL.

Unconjugated rabbit recombinant monoclonal antibody pair in PBS only storage buffer at a concentration of 1 mg/mL, ready for conjugation. Created using Proteintech's proprietary in-house recombinant technology. Recombinant production enables unrivalled batch-to-batch consistency, easy scale-up, and future security of supply.

Matched antibody pairs are designed for use in a variety of assays and platforms that require matched antibody pairs.

Antibody use should be optimized for each application and assay.

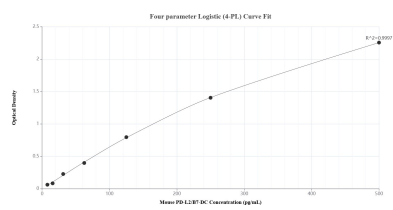
Storage

Storage:
Store at -80°C.
Storage buffer:
PBS only

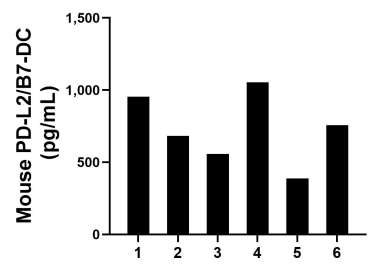
For technical support and original validation data for this product please contact:
T: 1 (888) 4PTGLAB (1-888-478-4522) (toll free in USA), or 1(312) 455-8498 (outside USA)
E: proteintech@ptglab.com
W: ptglab.com

This product is exclusively available under Proteintech Group brand and is not available to purchase from any other manufacturer.

Selected Validation Data



Sandwich ELISA standard curve of MP01413-3, Mouse PD-L2/B7-DC Recombinant Matched Antibody Pair - PBS only. 84573-5-PBS was coated to a plate as the capture antibody and incubated with serial dilutions of standard Eg1842. 84573-4-PBS was HRP conjugated as the detection antibody. Range: 15.6-500 pg/mL



Serum of six mice was measured. The PD-L2/B7-DC concentration of detected samples was determined to be 731.7 pg/mL with a range of 387.7-1,052.8 pg/mL