

SPARC Recombinant Matched Antibody Pair, PBS Only

Catalog Number: **MP01430-2**

Capture Antibody Information

Catalog Number:
84621-1-PBS
Host:
Rabbit
Isotype:
IgG
Purification Method:
Protein A purification

Clone ID:
241952A12
Reactivity:
human

Conjugate:
Unconjugated
Full name:
secreted protein, acidic, cysteine-rich (osteonectin)
Gene ID:
6678

Detection Antibody Information

Catalog Number:
84621-3-PBS
Host:
Rabbit
Isotype:
IgG
Purification Method:
Protein A purification

Clone ID:
241952E11
Reactivity:
human
GenBank:
NM_003118.4

Conjugate:
Unconjugated
Full name:
secreted protein, acidic, cysteine-rich (osteonectin)
Gene ID:
6678

Applications

Tested Applications:
Cytometric bead array, Sandwich ELISA

Range:
0.313-10 ng/mL (Cytometric Bead Array)
39.1-1250 pg/mL (Sandwich ELISA)

Recommended Dilutions:
It is recommended that this reagent should be titrated in each testing system to obtain optimal results.

Product Information

MP01430-2 targets SPARC in immunoassays as a matched antibody pair. Validated in Cytometric bead array, Sandwich ELISA.

Capture antibody: SPARC Recombinant antibody, PBS Only (Capture) 84621-1-PBS (241952A12). 100 µg. Concentration 1 mg/mL.

Detection antibody: SPARC Recombinant antibody, PBS Only (Detector) 84621-3-PBS (241952E11). 100 µg. Concentration 1 mg/mL.

Unconjugated rabbit recombinant monoclonal antibody pair in PBS only storage buffer at a concentration of 1 mg/mL, ready for conjugation. Created using Proteintech's proprietary in-house recombinant technology. Recombinant production enables unrivalled batch-to-batch consistency, easy scale-up, and future security of supply.

Matched antibody pairs are designed for use in a variety of assays and platforms that require matched antibody pairs.

Antibody use should be optimized for each application and assay.

Storage

Storage:
Store at -80°C.
Storage buffer:
PBS only

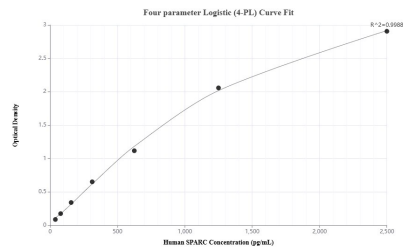
For technical support and original validation data for this product please contact:

T: 1 (888) 4PTGLAB (1-888-478-4522) (toll free in USA), or 1(312) 455-8498 (outside USA)

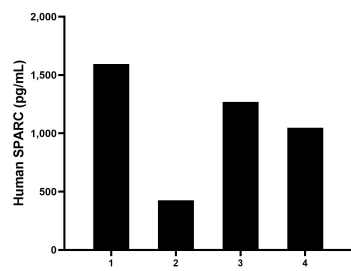
E: proteintech@ptglab.com
W: ptglab.com

This product is exclusively available under Proteintech Group brand and is not available to purchase from any other manufacturer.

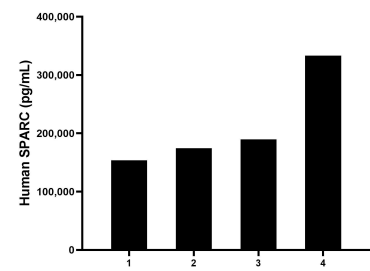
Selected Validation Data



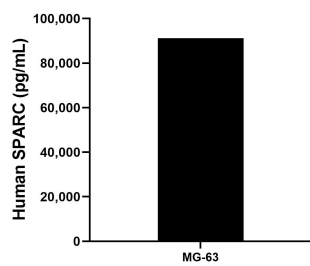
Sandwich ELISA standard curve of MP01430-2, Human SPARC Recombinant Matched Antibody Pair - PBS only. 84621-1-PBS was coated to a plate as the capture antibody and incubated with serial dilutions of standard Eg1169. 84621-3-PBS was HRP conjugated as the detection antibody. Range: 39.1-1250 pg/mL



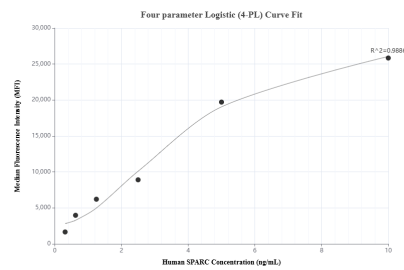
Human milk of four healthy human donors was measured. The human SPARC concentration of detected samples was determined to be 1,084.0 pg/mL with a range of 425.0 - 1,594.2 pg/mL



Serum of four healthy human donors was measured. The human SPARC concentration of detected samples was determined to be 212,811.0 pg/mL with a range of 153,761.1 - 333,381.8 pg/mL



MG-63 cells were cultured in DMEM supplemented with 10% fetal bovine serum. An aliquot of the cell culture supernate was removed, assayed for human SPARC, and measured 91,240.8 pg/mL



Cytometric bead array standard curve of MP01430-2, SPARC Recombinant Matched Antibody Pair, PBS Only. Capture antibody: 84621-1-PBS. Detection antibody: 84621-3-PBS. Standard: Eg1169. Range: 0.313-10 ng/mL