

DPP4/CD26 Recombinant Matched Antibody Pair, PBS Only

Catalog Number: **MP01439-3**

Capture Antibody Information

Catalog Number:

84606-5-PBS

Host:

Rabbit

Isotype:

IgG

Purification Method:

Protein A purification

Clone ID:

242045D10

Reactivity:

human

Conjugate:

Unconjugated

Full name:

dipeptidyl-peptidase 4

Gene ID:

1803

Detection Antibody Information

Catalog Number:

84606-4-PBS

Host:

Rabbit

Isotype:

IgG

Purification Method:

Protein A purification

Clone ID:

242045A5

Reactivity:

human

GenBank:

BC013329

Conjugate:

Unconjugated

Full name:

dipeptidyl-peptidase 4

Gene ID:

1803

Applications

Tested Applications:

Sandwich ELISA

Range:

39.1-2500 pg/mL (Sandwich ELISA)

Recommended Dilutions:

It is recommended that this reagent should be titrated in each testing system to obtain optimal results.

Product Information

MP01439-3 targets DPP4/CD26 in immunoassays as a matched antibody pair. Validated in Sandwich ELISA.

Capture antibody: DPP4/CD26 Recombinant antibody, PBS Only (Capture) 84606-5-PBS (242045D10). 100 µg. Concentration 1 mg/mL.

Detection antibody: DPP4/CD26 Recombinant antibody, PBS Only (Detector) 84606-4-PBS (242045A5). 100 µg. Concentration 1 mg/mL.

Unconjugated rabbit recombinant monoclonal antibody pair in PBS only storage buffer at a concentration of 1 mg/mL, ready for conjugation. Created using Proteintech's proprietary in-house recombinant technology. Recombinant production enables unrivalled batch-to-batch consistency, easy scale-up, and future security of supply.

Matched antibody pairs are designed for use in a variety of assays and platforms that require matched antibody pairs.

Antibody use should be optimized for each application and assay.

Storage

Storage:

Store at -80°C.

Storage buffer:

PBS only

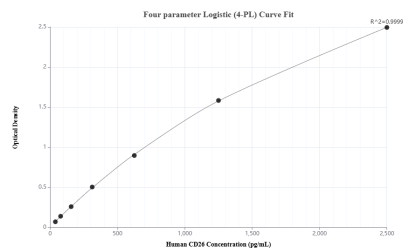
For technical support and original validation data for this product please contact:

T: 1 (888) 4PTGLAB (1-888-478-4522) (toll free in USA), or 1(312) 455-8498 (outside USA)

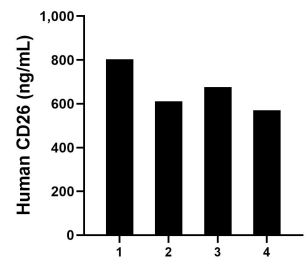
E: proteintech@ptglab.com
W: ptglab.com

This product is exclusively available under Proteintech Group brand and is not available to purchase from any other manufacturer.

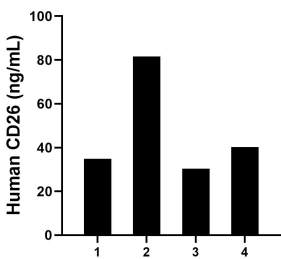
Selected Validation Data



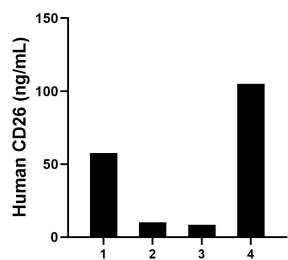
Sandwich ELISA standard curve of MP01439-3, Human DPP4/CD26 Recombinant Matched Antibody Pair - PBS only. 84606-5-PBS was coated to a plate as the capture antibody and incubated with serial dilutions of standard Eg0157. 84606-4-PBS was HRP conjugated as the detection antibody. Range: 39.1-2500 pg/mL



Serum of four individual healthy human donors was measured. The human DPP4/CD26 concentration of detected samples was determined to be 665.25 ng/mL with a range of 570.16 - 803.43 ng/mL



Saliva of four individual healthy human donors was measured. The human DPP4/CD26 concentration of detected samples was determined to be 46.73 ng/mL with a range of 30.36 - 81.55 ng/mL



Urine of four individual healthy human donors was measured. The human DPP4/CD26 concentration of detected samples was determined to be 45.25 ng/mL with a range of 8.4 - 104.93 ng/mL