

For Research Use Only

Mouse CD31 Recombinant Matched Antibody Pair, PBS Only



Catalog Number:MP01441-2

Capture Antibody Information

Catalog Number:
84607-1-PBS
Host:
Rabbit
Isotype:
IgG
Purification Method:
Protein A purification

Clone ID:
242041D6
Reactivity:
mouse
Immunogen Catalog Number:
Eg0846

Conjugate:
Unconjugated
Full name:
platelet/endothelial cell adhesion molecule 1
Gene ID:
18613

Detection Antibody Information

Catalog Number:
84607-3-PBS
Host:
Rabbit
Isotype:
IgG
Purification Method:
Protein A purification

Clone ID:
242041H3
Reactivity:
mouse
GenBank:
NM_001305157.1
Immunogen Catalog Number:
Eg0846

Conjugate:
Unconjugated
Full name:
platelet/endothelial cell adhesion molecule 1
Gene ID:
18613

Applications

Tested Applications:
Cytometric bead array, Sandwich ELISA

Range:
0.469-30 ng/mL (Cytometric Bead Array)
19.5-1250 pg/mL (Sandwich ELISA)

Recommended Dilutions:
It is recommended that this reagent should be titrated in each testing system to obtain optimal results.

Product Information

MP01441-2 targets CD31 in immunoassays as a matched antibody pair. Validated in Cytometric bead array, Sandwich ELISA.

Capture antibody: Mouse CD31/PECAM-1 Recombinant antibody, PBS Only (Capture) 84607-1-PBS (242041D6). 100 µg. Concentration 1 mg/mL.

Detection antibody: Mouse CD31/PECAM-1 Recombinant antibody, PBS Only (Detector) 84607-3-PBS (242041H3). 100 µg. Concentration 1 mg/mL.

Unconjugated rabbit recombinant monoclonal antibody pair in PBS only storage buffer at a concentration of 1 mg/mL, ready for conjugation. Created using Proteintech's proprietary in-house recombinant technology. Recombinant production enables unrivalled batch-to-batch consistency, easy scale-up, and future security of supply.

Matched antibody pairs are designed for use in a variety of assays and platforms that require matched antibody pairs.

Antibody use should be optimized for each application and assay.

Storage

Storage:
Store at -80°C.
Storage buffer:
PBS only

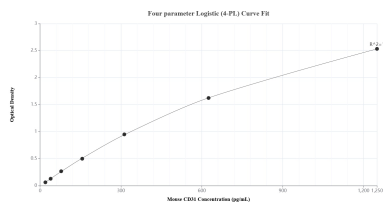
For technical support and original validation data for this product please contact:

T: 1 (888) 4PTGLAB (1-888-478-4522) (toll free in USA), or 1(312) 455-8498 (outside USA)

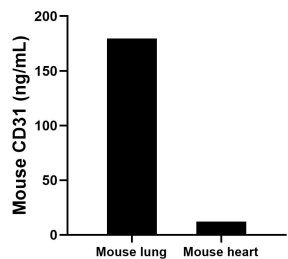
E: proteintech@ptglab.com
W: ptglab.com

This product is exclusively available under Proteintech Group brand and is not available to purchase from any other manufacturer.

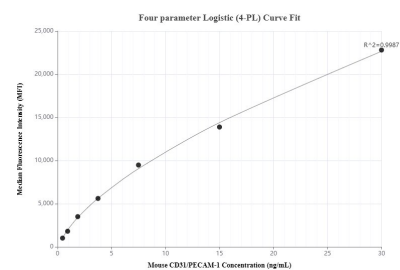
Selected Validation Data



Sandwich ELISA standard curve of MP01441-2, Mouse CD31 Recombinant Matched Antibody Pair - PBS only. 84607-1-PBS was coated to a plate as the capture antibody and incubated with serial dilutions of standard Eg0846. 84607-3-PBS was HRP conjugated as the detection antibody. Range: 19.5-1250 pg/mL



The mean CD31 concentration was determined to be 179.5 ng/mL in mouse lung tissue extract based on a 1.6 mg/mL extract load and 12.0 ng/mL in mouse heart tissue extract based on a 1.2 mg/mL extract load.



Cytometric bead array standard curve of MP01441-2, MOUSE CD31 Recombinant Matched Antibody Pair, PBS Only. Capture antibody: 84607-1-PBS. Detection antibody: 84607-3-PBS. Standard: Eg0846. Range: 0.469-30 ng/mL