

KIM-1/HAVCR1 Recombinant Matched Antibody Pair, PBS Only

Catalog Number: **MP01449-1**

Capture Antibody Information

Catalog Number:
84600-1-PBS
Host:
Rabbit
Isotype:
IgG
Purification Method:
Protein A purification

Clone ID:
242001A2
Reactivity:
human

Conjugate:
Unconjugated
Full name:
hepatitis A virus cellular receptor 1
Gene ID:
26762

Detection Antibody Information

Catalog Number:
84600-2-PBS
Host:
Rabbit
Isotype:
IgG
Purification Method:
Protein A purification

Clone ID:
242001E8
Reactivity:
human
GenBank:
NM_001173393.3

Conjugate:
Unconjugated
Full name:
hepatitis A virus cellular receptor 1
Gene ID:
26762

Applications

Tested Applications:
Cytometric bead array, Sandwich ELISA

Range:
0.625-80 ng/mL (Cytometric Bead Array)
9.77-625 pg/mL (Sandwich ELISA)

Recommended Dilutions:
It is recommended that this reagent should be titrated in each testing system to obtain optimal results.

Product Information

MP01449-1 targets KIM-1/HAVCR1 in immunoassays as a matched antibody pair. Validated in Cytometric bead array, Sandwich ELISA.

Capture antibody: TIM-1/KIM-1/HAVCR Recombinant antibody, PBS Only (Capture) 84600-1-PBS (242001A2). 100 µg. Concentration 1 mg/mL.

Detection antibody: TIM-1/KIM-1/HAVCR Recombinant antibody, PBS Only (Detector) 84600-2-PBS (242001E8). 100 µg. Concentration 1 mg/mL.

Unconjugated rabbit recombinant monoclonal antibody pair in PBS only storage buffer at a concentration of 1 mg/mL, ready for conjugation. Created using Proteintech's proprietary in-house recombinant technology. Recombinant production enables unrivalled batch-to-batch consistency, easy scale-up, and future security of supply.

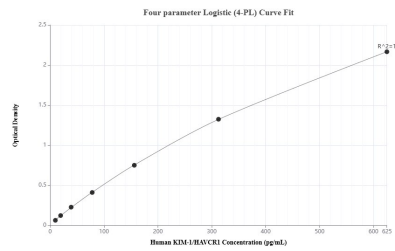
Matched antibody pairs are designed for use in a variety of assays and platforms that require matched antibody pairs.

Antibody use should be optimized for each application and assay.

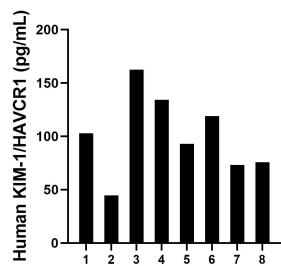
Storage

Storage:
Store at -80°C.
Storage buffer:
PBS only

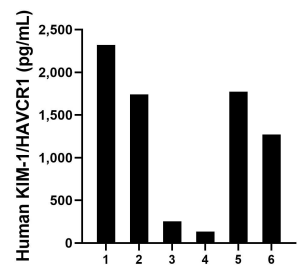
Selected Validation Data



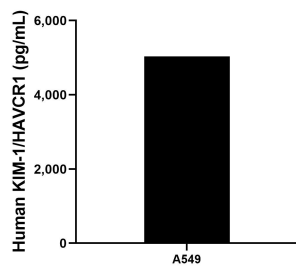
Sandwich ELISA standard curve of MP01449-1, Human KIM-1/HAVCR1 Recombinant Matched Antibody Pair - PBS only. 84600-1-PBS was coated to a plate as the capture antibody and incubated with serial dilutions of standard Eg1442. 84600-2-PBS was HRP conjugated as the detection antibody. Range: 9.77-625 pg/mL



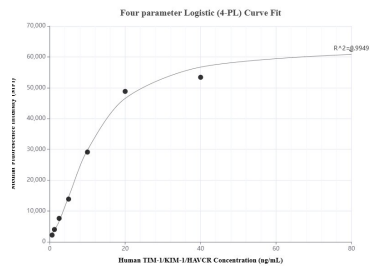
Serum of eight individual healthy human donors was measured. The human KIM-1/HAVCR1 concentration of detected samples was determined to be 100.6 pg/mL with a range of 44.6-162.5 pg/mL



Urine of six individual healthy human donors was measured. The human KIM-1/HAVCR1 concentration of detected samples was determined to be 1,248.6 pg/mL with a range of 134.3-2,318.7 pg/mL



A549 were cultured in DMEM supplemented with 10% fetal bovine serum, 2.5 mM L-glutamine, 100 U/mL penicillin, and 100 µg/mL streptomycin sulfate. An aliquot of the cell culture supernate was removed, assayed for human KIM-1/HAVCR1, and measured 5,031.4 pg/mL



Cytometric bead array standard curve of MP01449-1, KIM-1/HAVCR1 Recombinant Matched Antibody Pair, PBS Only. Capture antibody: 84600-1-PBS. Detection antibody: 84600-2-PBS. Standard: Eg1442. Range: 0.625-80 ng/mL