

PSMA/GCPII Recombinant Matched Antibody Pair, PBS Only

Catalog Number: **MP01454-1**

Capture Antibody Information

Catalog Number:
84615-2-PBS

Host:
Rabbit

Isotype:
IgG

Purification Method:
Protein A purification

Clone ID:
242026F4

Reactivity:
human

Conjugate:
Unconjugated

Full name:
folate hydrolase (prostate-specific membrane antigen) 1

Gene ID:
2346

Detection Antibody Information

Catalog Number:
84615-1-PBS

Host:
Rabbit

Isotype:
IgG

Purification Method:
Protein A purification

Clone ID:
242026E6

Reactivity:
human

GenBank:
NM_004476.3

Conjugate:
Unconjugated

Full name:
folate hydrolase (prostate-specific membrane antigen) 1

Gene ID:
2346

Applications

Tested Applications:
Cytometric bead array, Sandwich ELISA

Range:
0.781-100 ng/mL (Cytometric Bead Array)
0.313-20 ng/mL (Sandwich ELISA)

Recommended Dilutions:
It is recommended that this reagent should be titrated in each testing system to obtain optimal results.

Product Information

MP01454-1 targets PSMA/GCPII in immunoassays as a matched antibody pair. Validated in Cytometric bead array, Sandwich ELISA.

Capture antibody: PSMA/GCPII Recombinant antibody, PBS Only (Capture) 84615-2-PBS (242026F4). 100 µg. Concentration 1 mg/mL.

Detection antibody: PSMA/GCPII Recombinant antibody, PBS Only (Detector) 84615-1-PBS (242026E6). 100 µg. Concentration 1 mg/mL.

Unconjugated rabbit recombinant monoclonal antibody pair in PBS only storage buffer at a concentration of 1 mg/mL, ready for conjugation. Created using Proteintech's proprietary in-house recombinant technology. Recombinant production enables unrivalled batch-to-batch consistency, easy scale-up, and future security of supply.

Matched antibody pairs are designed for use in a variety of assays and platforms that require matched antibody pairs.

Antibody use should be optimized for each application and assay.

Storage

Storage:
Store at -80°C.

Storage buffer:
PBS only

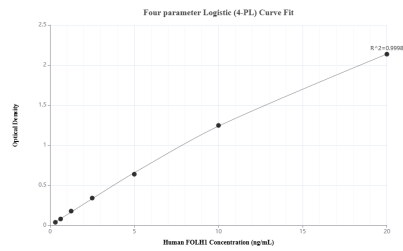
For technical support and original validation data for this product please contact:

T: 1 (888) 4PTGLAB (1-888-478-4522) (toll free in USA), or 1(312) 455-8498 (outside USA)

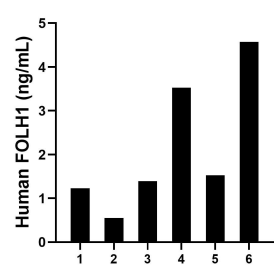
E: proteintech@ptglab.com
W: ptglab.com

This product is exclusively available under Proteintech Group brand and is not available to purchase from any other manufacturer.

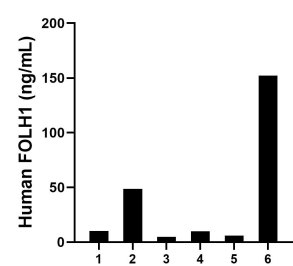
Selected Validation Data



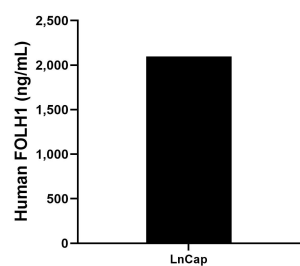
Sandwich ELISA standard curve of MP01454-1, Human FOLH1 Recombinant Matched Antibody Pair - PBS only. 84615-2-PBS was coated to a plate as the capture antibody and incubated with serial dilutions of standard Eg0216. 84615-1-PBS was HRP conjugated as the detection antibody. Range: 0.313-20 ng/mL



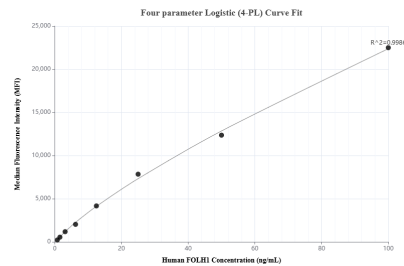
Saliva of six individual healthy human donors was measured. The human FOLH1 concentration of detected samples was determined to be 2.13 ng/mL with a range of 0.55 - 4.58 ng/mL



Serum of six individual healthy human donors was measured. The human FOLH1 concentration of detected samples was determined to be 38.61 ng/mL with a range of 4.93 - 152.25 ng/mL



The mean FOLH1 concentration was determined to be 2,098.65 ng/mL in LnCap cell extract based on a 2.0 mg/mL extract load.



Cytometric bead array standard curve of MP01454-1, FOLH1 Recombinant Matched Antibody Pair, PBS Only. Capture antibody: 84615-2-PBS. Detection antibody: 84615-1-PBS. Standard: Eg0216. Range: 0.781-100 ng/mL