

PON3 Recombinant Matched Antibody Pair, PBS Only

Catalog Number: **MP01459-2**

Capture Antibody Information

Catalog Number:

84604-1-PBS

Host:

Rabbit

Isotype:

IgG

Purification Method:

Protein A purification

Clone ID:

242035D3

Reactivity:

human

Immunogen Catalog Number:

Ag36602

Conjugate:

Unconjugated

Full name:

paraoxonase 3

Gene ID:

5446

Detection Antibody Information

Catalog Number:

84604-3-PBS

Host:

Rabbit

Isotype:

IgG

Purification Method:

Protein A purification

Clone ID:

242035G12

Reactivity:

human

GenBank:

NM_000940.2

Immunogen Catalog Number:

Ag36602

Conjugate:

Unconjugated

Full name:

paraoxonase 3

Gene ID:

5446

Applications

Tested Applications:

Cytometric bead array, Sandwich ELISA

Range:0.625-80 ng/mL (Cytometric Bead Array)
78.1-5000 pg/mL (Sandwich ELISA)**Recommended Dilutions:**

It is recommended that this reagent should be titrated in each testing system to obtain optimal results.

Product Information

MP01459-2 targets PON3 in immunoassays as a matched antibody pair. Validated in Cytometric bead array, Sandwich ELISA.

Capture antibody: PON3 Recombinant antibody, PBS Only (Capture) 84604-1-PBS (242035D3). 100 µg. Concentration 1 mg/mL.

Detection antibody: PON3 Recombinant antibody, PBS Only (Detector) 84604-3-PBS (242035G12). 100 µg. Concentration 1 mg/mL.

Alternative PON3 matched antibody pairs: MP01459-1

Unconjugated rabbit recombinant monoclonal antibody pair in PBS only storage buffer at a concentration of 1 mg/mL, ready for conjugation. Created using Proteintech's proprietary in-house recombinant technology. Recombinant production enables unrivalled batch-to-batch consistency, easy scale-up, and future security of supply.

Matched antibody pairs are designed for use in a variety of assays and platforms that require matched antibody pairs.

Antibody use should be optimized for each application and assay.

Storage

Storage:

Store at -80°C.

Storage buffer:

PBS only

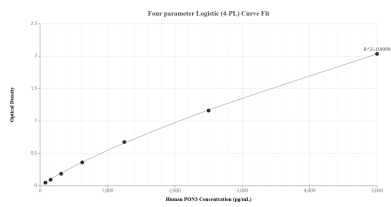
For technical support and original validation data for this product please contact:

T: 1 (888) 4PTGLAB (1-888-478-4522) (toll free in USA), or 1(312) 455-8498 (outside USA)

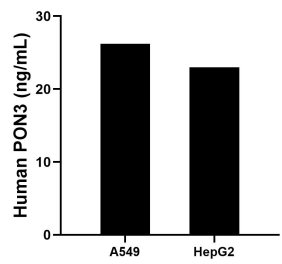
E: proteintech@ptglab.com
W: ptglab.com

This product is exclusively available under Proteintech Group brand and is not available to purchase from any other manufacturer.

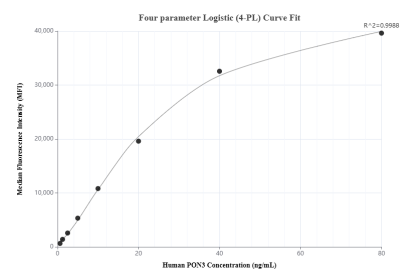
Selected Validation Data



Sandwich ELISA standard curve of MP01459-2, Human PON3 Recombinant Matched Antibody Pair - PBS only. 84604-1-PBS was coated to a plate as the capture antibody and incubated with serial dilutions of standard Ag36602. 84604-3-PBS was HRP conjugated as the detection antibody. Range: 78.1-5000 pg/mL.



The mean PON3 concentration was determined to be 26.2 ng/mL in A549 cell extract based on a 1.5 mg/mL extract load and 23.0 ng/mL in HepG2 cell extract based on a 3.3 mg/mL extract load.



Cytometric bead array standard curve of MP01459-2, PON3 Recombinant Matched Antibody Pair, PBS Only. Capture antibody: 84604-1-PBS. Detection antibody: 84604-3-PBS. Standard: Ag36602. Range: 0.625-80 ng/mL.