

# LAIR1 Recombinant Matched Antibody Pair, PBS Only

Catalog Number: **MP01466-1**

## Capture Antibody Information

**Catalog Number:**

84677-1-PBS

**Host:**

Rabbit

**Isotype:**

IgG

**Purification Method:**

Protein A purification

**Clone ID:**

241805A9

**Reactivity:**

human

**Conjugate:**

Unconjugated

**Full name:**

leukocyte-associated  
immunoglobulin-like receptor 1

**Gene ID:**

3903

## Detection Antibody Information

**Catalog Number:**

84677-3-PBS

**Host:**

Rabbit

**Isotype:**

IgG

**Purification Method:**

Protein A purification

**Clone ID:**

241805F10

**Reactivity:**

human

**GenBank:**

BC027899

**Conjugate:**

Unconjugated

**Full name:**

leukocyte-associated  
immunoglobulin-like receptor 1

**Gene ID:**

3903

## Applications

**Tested Applications:**

Cytometric bead array, Sandwich  
ELISA

**Range:**

0.469-30 ng/mL (Cytometric Bead  
Array)  
4.88-312.5 pg/mL (Sandwich ELISA)

**Recommended Dilutions:**

It is recommended that this reagent  
should be titrated in each testing  
system to obtain optimal results.

## Product Information

MP01466-1 targets LAIR1 in immunoassays as a matched antibody pair. Validated in Cytometric bead array, Sandwich ELISA.

Capture antibody: LAIR1 Recombinant antibody, PBS Only (Capture) 84677-1-PBS (241805A9). 100 µg. Concentration 1 mg/mL.

Detection antibody: LAIR1 Recombinant antibody, PBS Only (Capture/Detector) 84677-3-PBS (241805F10). 100 µg. Concentration 1 mg/mL.

Unconjugated rabbit recombinant monoclonal antibody pair in PBS only storage buffer at a concentration of 1 mg/mL, ready for conjugation. Created using Proteintech's proprietary in-house recombinant technology. Recombinant production enables unrivalled batch-to-batch consistency, easy scale-up, and future security of supply.

Matched antibody pairs are designed for use in a variety of assays and platforms that require matched antibody pairs.

Antibody use should be optimized for each application and assay.

## Storage

**Storage:**

Store at -80°C.

**Storage buffer:**

PBS only

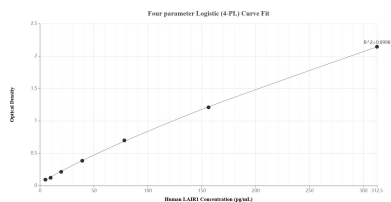
For technical support and original validation data for this product please contact:

T: 1 (888) 4PTGLAB (1-888-478-4522) (toll free  
in USA), or 1(312) 455-8498 (outside USA)

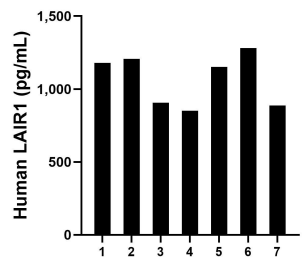
E: [proteintech@ptglab.com](mailto:proteintech@ptglab.com)  
W: [ptglab.com](http://ptglab.com)

**This product is exclusively available under Proteintech Group brand and is not available to purchase from any other manufacturer.**

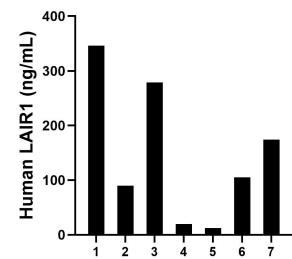
## Selected Validation Data



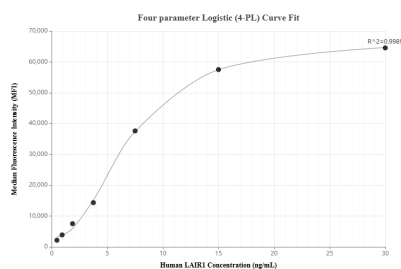
Sandwich ELISA standard curve of MP01466-1, Human LAIR1 Recombinant Matched Antibody Pair - PBS only. 84677-1-PBS was coated to a plate as the capture antibody and incubated with serial dilutions of standard Eg2329. 84677-3-PBS was HRP conjugated as the detection antibody. Range: 4.88-312.5 pg/mL



Serum of seven individual healthy human donors was measured. The LAIR1 concentration of detected samples was determined to be 1,065.9 pg/mL with a range of 851.5-1,280.7 pg/mL



Urine of seven individual healthy human donors was measured. The LAIR1 concentration of detected samples was determined to be 146.7 ng/mL with a range of 12.5-346.3 ng/mL



Cytometric bead array standard curve of MP01466-1, LAIR1 Recombinant Matched Antibody Pair, PBS Only. Capture antibody: 84677-1-PBS. Detection antibody: 84677-3-PBS. Standard: Eg2329. Range: 0.469-30 ng/mL