

EPCR/CD201 Recombinant Matched Antibody Pair, PBS Only

Catalog Number: **MP01480-1**

Capture Antibody Information

Catalog Number:
84648-3-PBS

Host:
Rabbit

Isotype:
IgG

Purification Method:
Protein A purification

Clone ID:
241806D12

Reactivity:
human

Conjugate:
Unconjugated

Full name:
protein C receptor, endothelial (EPCR)

Gene ID:
10544

Detection Antibody Information

Catalog Number:
84648-1-PBS

Host:
Rabbit

Isotype:
IgG

Purification Method:
Protein A purification

Clone ID:
241806C6

Reactivity:
human

GenBank:
BC014451

Conjugate:
Unconjugated

Full name:
protein C receptor, endothelial (EPCR)

Gene ID:
10544

Applications

Tested Applications:
Cytometric bead array, Sandwich
ELISA

Range:
0.625-40 ng/mL (Cytometric Bead
Array)
19.5-1250 pg/mL (Sandwich ELISA)

Recommended Dilutions:
It is recommended that this reagent
should be titrated in each testing
system to obtain optimal results.

Product Information

MP01480-1 targets EPCR/CD201 in immunoassays as a matched antibody pair. Validated in Cytometric bead array, Sandwich ELISA.

Capture antibody: EPCR/CD201 Recombinant antibody, PBS Only (Capture) 84648-3-PBS (241806D12). 100 µg. Concentration 1 mg/mL.

Detection antibody: EPCR/CD201 Recombinant antibody, PBS Only (Detector) 84648-1-PBS (241806C6). 100 µg. Concentration 1 mg/mL.

Unconjugated rabbit recombinant monoclonal antibody pair in PBS only storage buffer at a concentration of 1 mg/mL, ready for conjugation. Created using Proteintech's proprietary in-house recombinant technology. Recombinant production enables unrivalled batch-to-batch consistency, easy scale-up, and future security of supply.

Matched antibody pairs are designed for use in a variety of assays and platforms that require matched antibody pairs.

Antibody use should be optimized for each application and assay.

Storage

Storage:
Store at -80°C.
Storage buffer:
PBS only

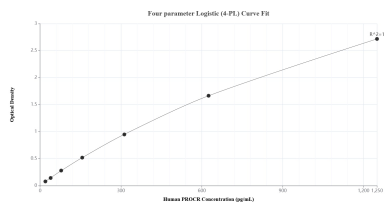
For technical support and original validation data for this product please contact:

T: 1 (888) 4PTGLAB (1-888-478-4522) (toll free
in USA), or 1(312) 455-8498 (outside USA)

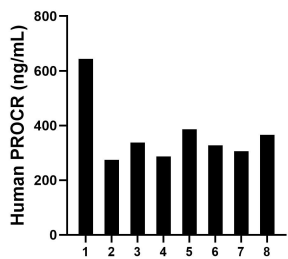
E: proteintech@ptglab.com
W: ptglab.com

This product is exclusively available under Proteintech Group brand and is not available to purchase from any other manufacturer.

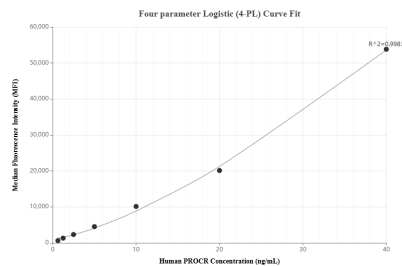
Selected Validation Data



Sandwich ELISA standard curve of MP01480-1, Human PROCR Recombinant Matched Antibody Pair - PBS only. 84648-3-PBS was coated to a plate as the capture antibody and incubated with serial dilutions of standard Eg2339. 84648-1-PBS was HRP conjugated as the detection antibody. Range: 19.5-1250 pg/mL



Plasma of eight individual healthy human donors was measured. The PROCR concentration of detected samples was determined to be 366.0 ng/mL with a range of 274.3-643.4 ng/mL



Cytometric bead array standard curve of MP01480-1, PROCR Recombinant Matched Antibody Pair, PBS Only. Capture antibody: 84648-3-PBS. Detection antibody: 84648-1-PBS. Standard: Eg2339. Range: 0.625-40 ng/mL