

Rat E-Cadherin Recombinant Matched Antibody Pair, PBS Only

Catalog Number: **MP01483-1**

Capture Antibody Information

Catalog Number:

84646-1-PBS

Host:

Rabbit

Isotype:

IgG

Purification Method:

Protein A purification

Clone ID:

242018A8

Reactivity:

rat

Immunogen Catalog Number:

Eg1229

Conjugate:

Unconjugated

Full name:

cadherin 1

Gene ID:

83502

Detection Antibody Information

Catalog Number:

84646-3-PBS

Host:

Rabbit

Isotype:

IgG

Purification Method:

Protein A purification

Clone ID:

242018D3

Reactivity:

human, rat

GenBank:

NM_031334.1

Immunogen Catalog Number:

Eg1229

Conjugate:

Unconjugated

Full name:

cadherin 1

Gene ID:

83502

Applications

Tested Applications:

Cytometric bead array, Sandwich
ELISA

Range:

0.781-100 ng/mL (Cytometric Bead
Array)
78.1-5000 pg/mL (Sandwich ELISA)

Recommended Dilutions:

It is recommended that this reagent
should be titrated in each testing
system to obtain optimal results.

Product Information

MP01483-1 targets E-Cadherin in immunoassays as a matched antibody pair. Validated in Cytometric bead array, Sandwich ELISA.

Capture antibody: Rat E-Cadherin Recombinant antibody, PBS Only (Capture) 84646-1-PBS (242018A8). 100 µg. Concentration 1 mg/mL.

Detection antibody: Rat E-Cadherin Recombinant antibody, PBS Only (Detector) 84646-3-PBS (242018D3). 100 µg. Concentration 1 mg/mL.

Unconjugated rabbit recombinant monoclonal antibody pair in PBS only storage buffer at a concentration of 1 mg/mL, ready for conjugation. Created using Proteintech's proprietary in-house recombinant technology. Recombinant production enables unrivalled batch-to-batch consistency, easy scale-up, and future security of supply.

Matched antibody pairs are designed for use in a variety of assays and platforms that require matched antibody pairs.

Antibody use should be optimized for each application and assay.

Storage

Storage:

Store at -80°C.

Storage buffer:

PBS only

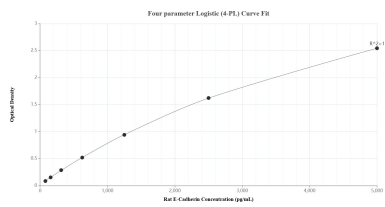
For technical support and original validation data for this product please contact:

T: 1 (888) 4PTGLAB (1-888-478-4522) (toll free
in USA), or 1(312) 455-8498 (outside USA)

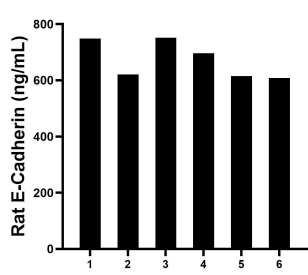
E: proteintech@ptglab.com
W: ptglab.com

This product is exclusively available under Proteintech Group brand and is not available to purchase from any other manufacturer.

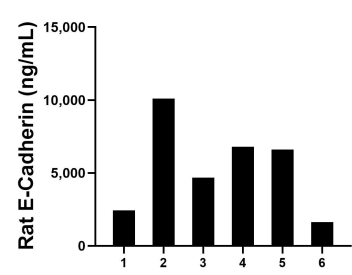
Selected Validation Data



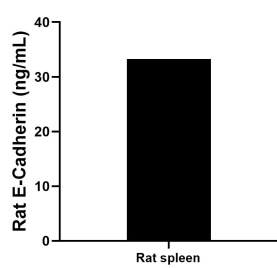
Sandwich ELISA standard curve of MP01483-1, Rat E-Cadherin Recombinant Matched Antibody Pair - PBS only. 84646-1-PBS was coated to a plate as the capture antibody and incubated with serial dilutions of standard Eg1229. 84646-3-PBS was HRP conjugated as the detection antibody. Range: 78.1-5000 pg/mL.



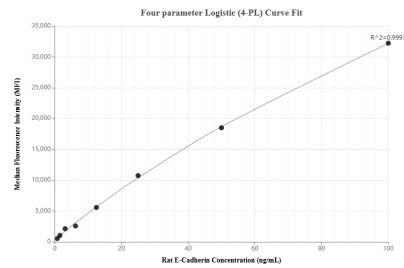
Serum of six rats was measured. The E-Cadherin concentration of detected samples was determined to be 673.3 ng/mL with a range of 608.2-748.3 ng/mL.



Urine of six rats was measured. The E-Cadherin concentration of detected samples was determined to be 5,367.9 ng/mL with a range of 1,627.0-10,091.3 ng/mL.



The mean E-Cadherin concentration was determined to be 33.3 ng/mL in rat spleen tissue extract based on a 2.7 mg/mL extract load.



Cytometric bead array standard curve of MP01483-1, RAT E-Cadherin Recombinant Matched Antibody Pair, PBS Only. Capture antibody: 84646-1-PBS. Detection antibody: 84646-3-PBS. Standard: Eg1229. Range: 0.781-100 ng/mL.