

CD107a / LAMP1 Recombinant Matched Antibody Pair, PBS Only

Catalog Number: **MP01489-1**

Capture Antibody Information

Catalog Number:
84658-1-PBS
Host:
Rabbit
Isotype:
IgG
Purification Method:
Protein A purification

Clone ID:
242116A6
Reactivity:
human

Conjugate:
Unconjugated
Full name:
lysosomal-associated membrane protein 1
Gene ID:
3916

Detection Antibody Information

Catalog Number:
84658-2-PBS
Host:
Rabbit
Isotype:
IgG
Purification Method:
Protein A purification

Clone ID:
242116A8
Reactivity:
human
GenBank:
NM_005561.4

Conjugate:
Unconjugated
Full name:
lysosomal-associated membrane protein 1
Gene ID:
3916

Applications

Tested Applications:
Cytometric bead array, Sandwich ELISA

Range:
0.781-100 ng/mL (Cytometric Bead Array)
0.156-10 ng/mL (Sandwich ELISA)

Recommended Dilutions:
It is recommended that this reagent should be titrated in each testing system to obtain optimal results.

Product Information

MP01489-1 targets CD107a / LAMP1 in immunoassays as a matched antibody pair. Validated in Cytometric bead array, Sandwich ELISA.

Capture antibody: LAMP1 Recombinant antibody, PBS Only (Capture) 84658-1-PBS (242116A6). 100 µg. Concentration 1 mg/mL.

Detection antibody: LAMP1 Recombinant antibody, PBS Only (Detector) 84658-2-PBS (242116A8). 100 µg. Concentration 1 mg/mL.

Unconjugated rabbit recombinant monoclonal antibody pair in PBS only storage buffer at a concentration of 1 mg/mL, ready for conjugation. Created using Proteintech's proprietary in-house recombinant technology. Recombinant production enables unrivalled batch-to-batch consistency, easy scale-up, and future security of supply.

Matched antibody pairs are designed for use in a variety of assays and platforms that require matched antibody pairs.

Antibody use should be optimized for each application and assay.

Storage

Storage:
Store at -80°C.
Storage buffer:
PBS only

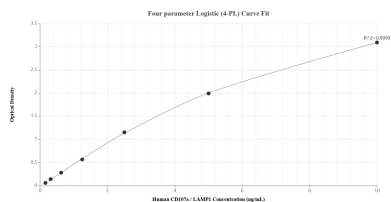
For technical support and original validation data for this product please contact:

T: 1 (888) 4PTGLAB (1-888-478-4522) (toll free in USA), or 1(312) 455-8498 (outside USA)

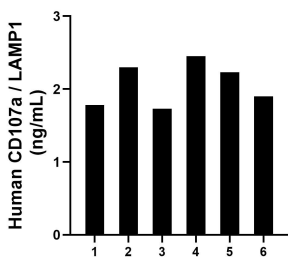
E: proteintech@ptglab.com
W: ptglab.com

This product is exclusively available under Proteintech Group brand and is not available to purchase from any other manufacturer.

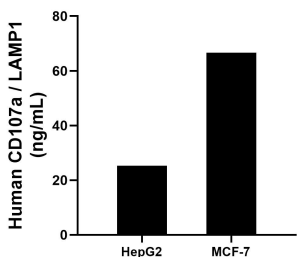
Selected Validation Data



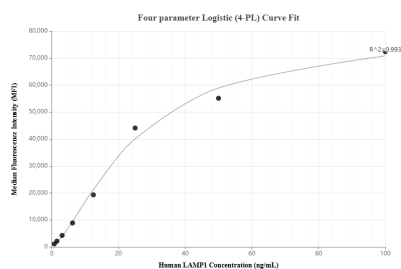
Sandwich ELISA standard curve of MP01489-1, Human CD107a / LAMP1 Recombinant Matched Antibody Pair - PBS only. 84658-1-PBS was coated to a plate as the capture antibody and incubated with serial dilutions of standard Eg2611. 84658-2-PBS was HRP conjugated as the detection antibody. Range: 0.156-10 ng/mL.



Plasma of six individual healthy human donors was measured. The CD107a / LAMP1 concentration of detected samples was determined to be 2.07 ng/mL with a range of 1.73-2.45 ng/mL.



The mean CD107a / LAMP1 concentration was determined to be 25.30 ng/mL in HepG2 cell extract based on a 1.00 mg/mL extract load and 66.62 ng/mL in MCF-7 cell extract based on a 1.20 mg/mL extract load.



Cytometric bead array standard curve of MP01489-1, CD107a / LAMP1 Recombinant Matched Antibody Pair, PBS Only. Capture antibody: 84658-1-PBS. Detection antibody: 84658-2-PBS. Standard: Eg2611. Range: 0.781-100 ng/mL.