

# CST5 Recombinant Matched Antibody Pair, PBS Only

Catalog Number: **MP01490-1**

## Capture Antibody Information

Catalog Number:  
84678-3-PBS

Host:  
Rabbit

Isotype:  
IgG

Purification Method:  
Protein A purification

Clone ID:  
241564F1

Reactivity:  
human

Immunogen Catalog Number:  
Ag34412

Conjugate:  
Unconjugated

Full name:  
cystatin D

Gene ID:  
1473

## Detection Antibody Information

Catalog Number:  
84678-2-PBS

Host:  
Rabbit

Isotype:  
IgG

Purification Method:  
Protein A purification

Clone ID:  
241564E7

Reactivity:  
human

GenBank:  
BC069514

Immunogen Catalog Number:  
Ag34412

Conjugate:  
Unconjugated

Full name:  
cystatin D

Gene ID:  
1473

## Applications

Tested Applications:

Cytometric bead array, Sandwich  
ELISA

Range:

0.781-100 ng/mL (Cytometric Bead  
Array)  
0.469-15 ng/mL (Sandwich ELISA)

Recommended Dilutions:

It is recommended that this reagent  
should be titrated in each testing  
system to obtain optimal results.

## Product Information

MP01490-1 targets CST5 in immunoassays as a matched antibody pair. Validated in Cytometric bead array, Sandwich ELISA.

Capture antibody: CST5 Recombinant antibody, PBS Only (Capture) 84678-3-PBS (241564F1). 100 µg. Concentration 1 mg/mL.

Detection antibody: CST5 Recombinant antibody, PBS Only (Detector) 84678-2-PBS (241564E7). 100 µg. Concentration 1 mg/mL.

Unconjugated rabbit recombinant monoclonal antibody pair in PBS only storage buffer at a concentration of 1 mg/mL, ready for conjugation. Created using Proteintech's proprietary in-house recombinant technology. Recombinant production enables unrivalled batch-to-batch consistency, easy scale-up, and future security of supply.

Matched antibody pairs are designed for use in a variety of assays and platforms that require matched antibody pairs.

Antibody use should be optimized for each application and assay.

## Storage

Storage:

Store at -80°C.

Storage buffer:  
PBS only

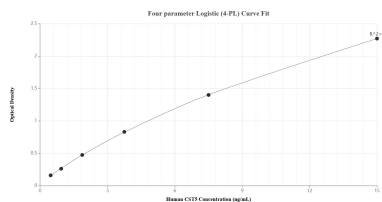
For technical support and original validation data for this product please contact:

T: 1 (888) 4PTGLAB (1-888-478-4522) (toll free  
in USA), or 1(312) 455-8498 (outside USA)

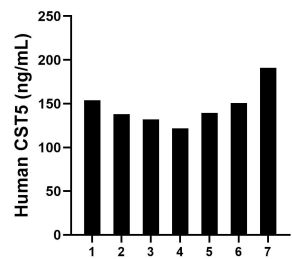
E: [proteintech@ptglab.com](mailto:proteintech@ptglab.com)  
W: [ptglab.com](http://ptglab.com)

**This product is exclusively available under Proteintech Group brand and is not available to purchase from any other manufacturer.**

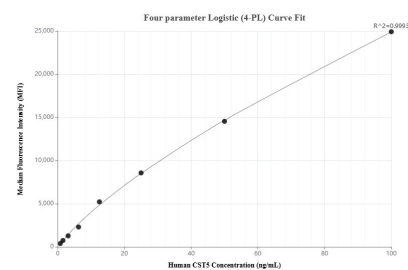
## Selected Validation Data



Sandwich ELISA standard curve of MP01490-1, Human CST5 Recombinant Matched Antibody Pair - PBS only. 84678-3-PBS was coated to a plate as the capture antibody and incubated with serial dilutions of standard Ag34412. 84678-2-PBS was HRP conjugated as the detection antibody. Range: 0.469-15 ng/mL.



Saliva of seven individual healthy human donors was measured. The CST5 concentration of detected samples was determined to be 146.65 ng/mL with a range of 121.75-191.04 ng/mL.



Cytometric bead array standard curve of MP01490-1, CST5 Recombinant Matched Antibody Pair, PBS Only. Capture antibody: 84678-3-PBS. Detection antibody: 84678-2-PBS. Standard: Ag34412. Range: 0.781-100 ng/mL.