

Serpin F1/PEDF Recombinant Matched Antibody Pair, PBS Only

Catalog Number: **MP01496-1**

Capture Antibody Information

Catalog Number:
84685-2-PBS
Host:
Rabbit
Isotype:
IgG
Purification Method:
Protein A purification

Clone ID:
242127C9
Reactivity:
human

Conjugate:
Unconjugated
Full name:
serpin peptidase inhibitor, clade F (alpha-2 antiplasmin, pigment epithelium derived factor), member 1
Gene ID:
5176

Detection Antibody Information

Catalog Number:
84685-1-PBS
Host:
Rabbit
Isotype:
IgG
Purification Method:
Protein A purification

Clone ID:
242127B6
Reactivity:
human
GenBank:
NM_002615.7

Conjugate:
Unconjugated
Full name:
serpin peptidase inhibitor, clade F (alpha-2 antiplasmin, pigment epithelium derived factor), member 1
Gene ID:
5176

Applications

Tested Applications:
Cytometric bead array, Sandwich ELISA

Range:
0.781-100 ng/mL (Cytometric Bead Array)
0.313-20 ng/mL (Sandwich ELISA)

Recommended Dilutions:
It is recommended that this reagent should be titrated in each testing system to obtain optimal results.

Product Information

MP01496-1 targets Serpin F1/PEDF in immunoassays as a matched antibody pair. Validated in Cytometric bead array, Sandwich ELISA.

Capture antibody: Serpin F1/PEDF Recombinant antibody, PBS Only (Capture) 84685-2-PBS (242127C9). 100 µg. Concentration 1 mg/mL.

Detection antibody: Serpin F1/PEDF Recombinant antibody, PBS Only (Detector) 84685-1-PBS (242127B6). 100 µg. Concentration 1 mg/mL.

Unconjugated rabbit recombinant monoclonal antibody pair in PBS only storage buffer at a concentration of 1 mg/mL, ready for conjugation. Created using Proteintech's proprietary in-house recombinant technology. Recombinant production enables unrivalled batch-to-batch consistency, easy scale-up, and future security of supply.

Matched antibody pairs are designed for use in a variety of assays and platforms that require matched antibody pairs.

Antibody use should be optimized for each application and assay.

Storage

Storage:
Store at -80°C.
Storage buffer:
PBS only

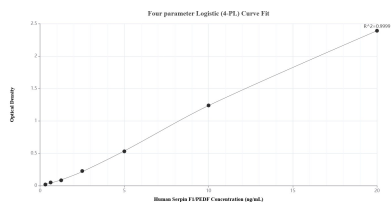
For technical support and original validation data for this product please contact:

T: 1 (888) 4PTGLAB (1-888-478-4522) (toll free in USA), or 1(312) 455-8498 (outside USA)

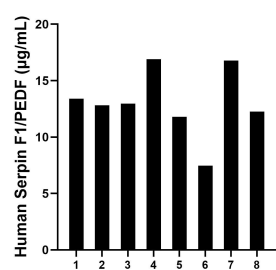
E: proteintech@ptglab.com
W: ptglab.com

This product is exclusively available under Proteintech Group brand and is not available to purchase from any other manufacturer.

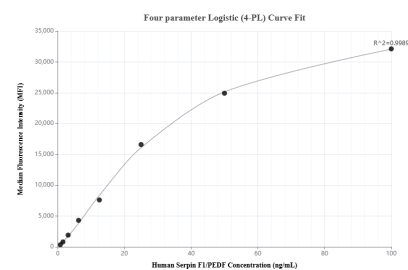
Selected Validation Data



Sandwich ELISA standard curve of MP01496-1, Human Serpin F1/PEDF Recombinant Matched Antibody Pair - PBS only. 84685-2-PBS was coated to a plate as the capture antibody and incubated with serial dilutions of standard Eg1152. 84685-1-PBS was HRP conjugated as the detection antibody. Range: 0.313-20 ng/mL



Serum of eight individual healthy human donors was measured. The Serpin F1/PEDF concentration of detected samples was determined to be 13.04 µg/mL with a range of 7.46-16.90 µg/mL



Cytometric bead array standard curve of MP01496-1, Serpin F1/PEDF Recombinant Matched Antibody Pair, PBS Only. Capture antibody: 84685-2-PBS. Detection antibody: 84685-1-PBS. Standard: Eg1152. Range: 0.781-100 ng/mL